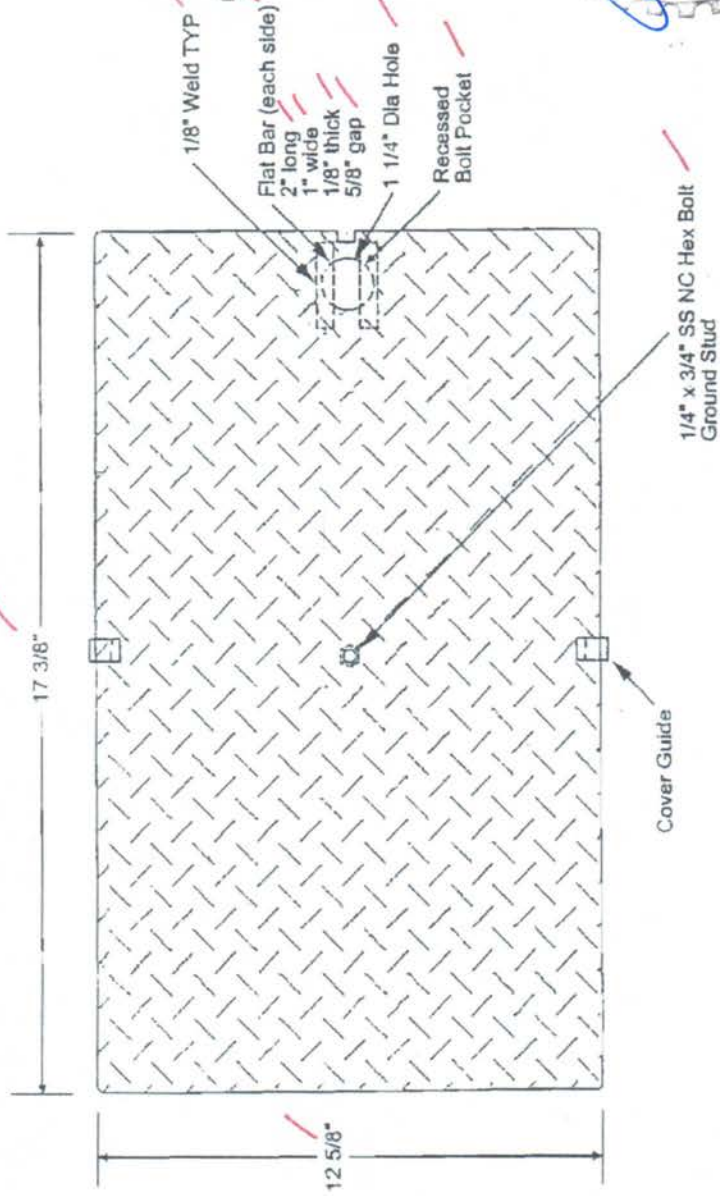
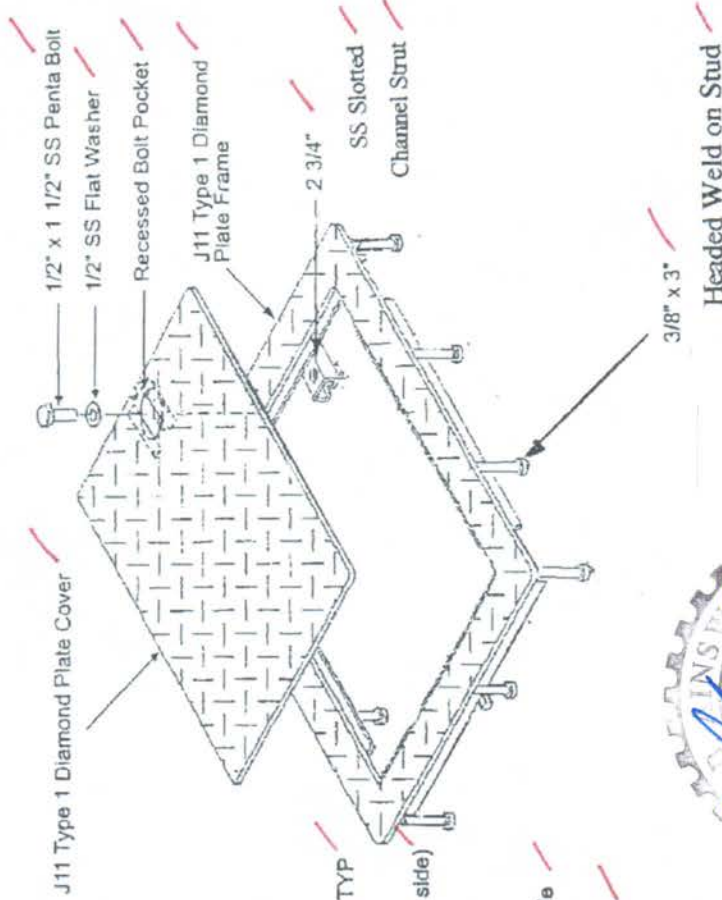


**APPROVED AS NOTED**

Washington State  
Department of Transportation  
HQ Traffic Operations Office  
DATE Aug. 11, 2009 TAT



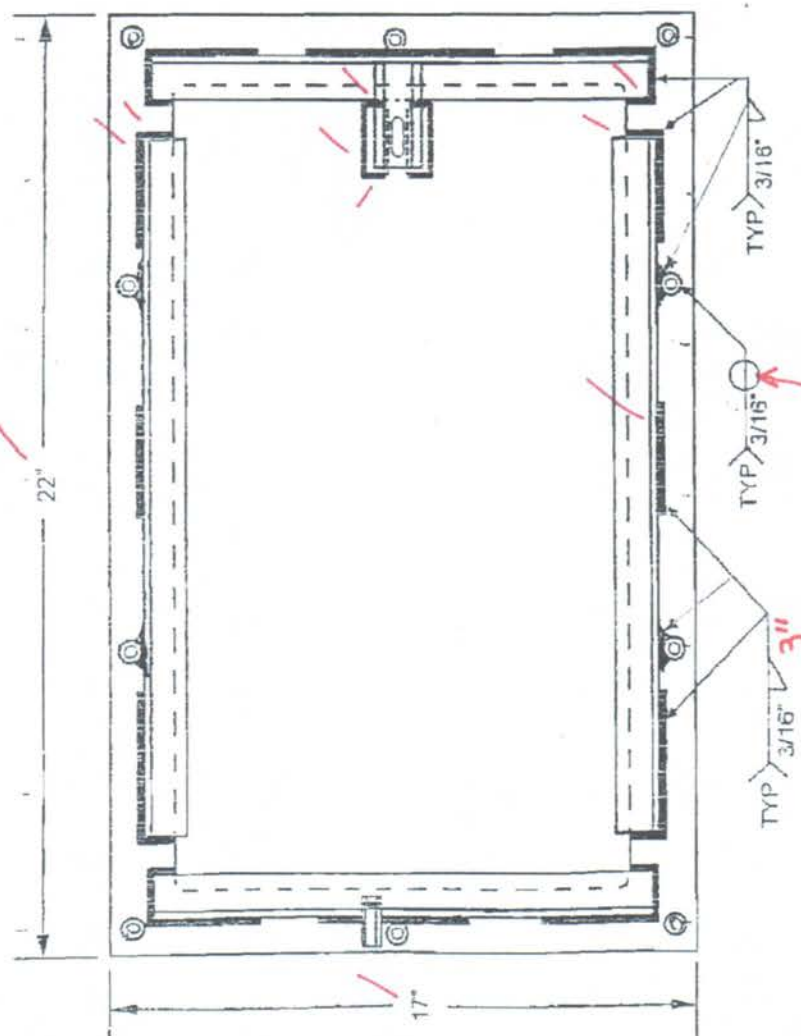
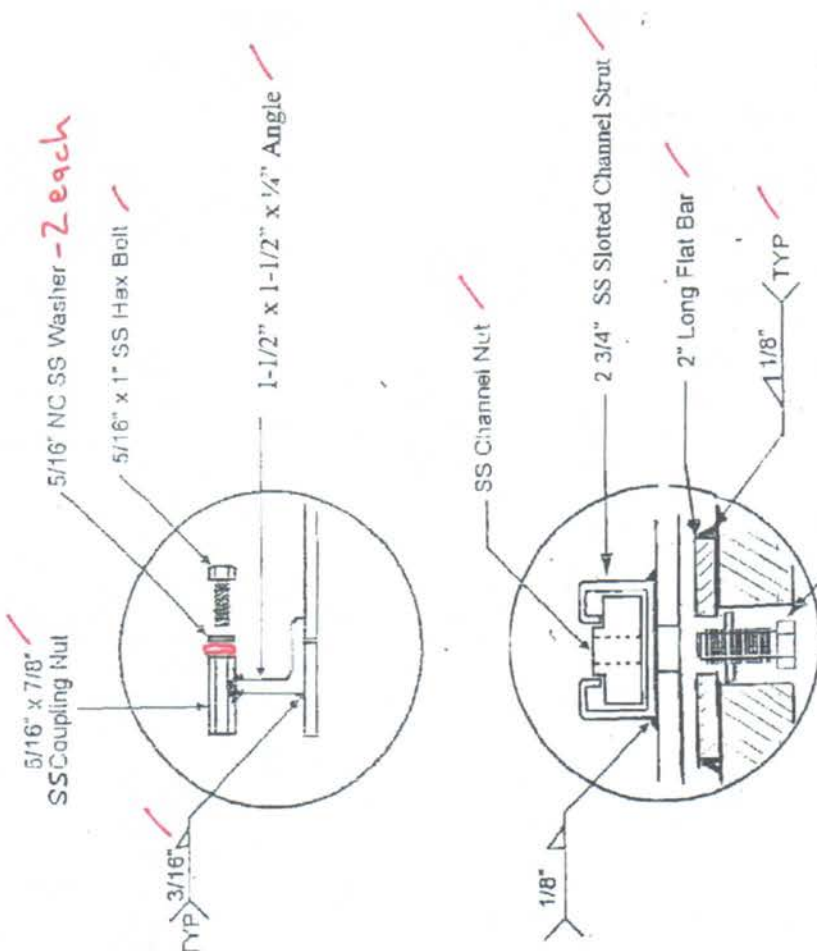
**J-11 Type 1 Locking**

1/4\"/>

**FOG TITE**  
INCORPORATED

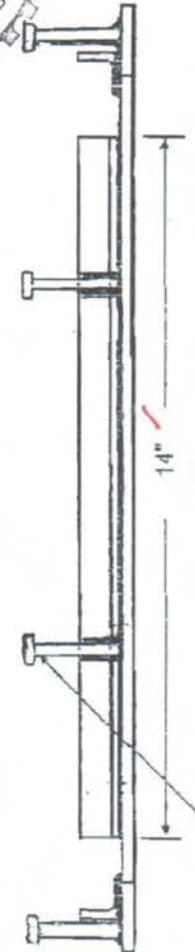
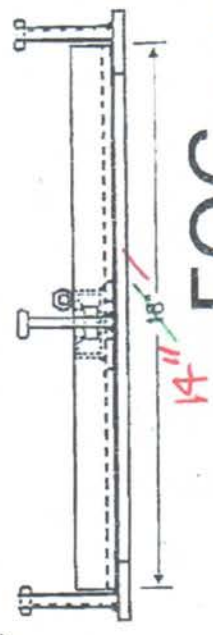
J-40.16-00

2/29



weld all around

**APPROVED AS NOTED**  
 Washington State  
 Department of Transportation  
 HQ Traffic Operations Office  
 DATE Aug. 11, 2009 TAT



3/8" x 3" Headed Weld on Stud

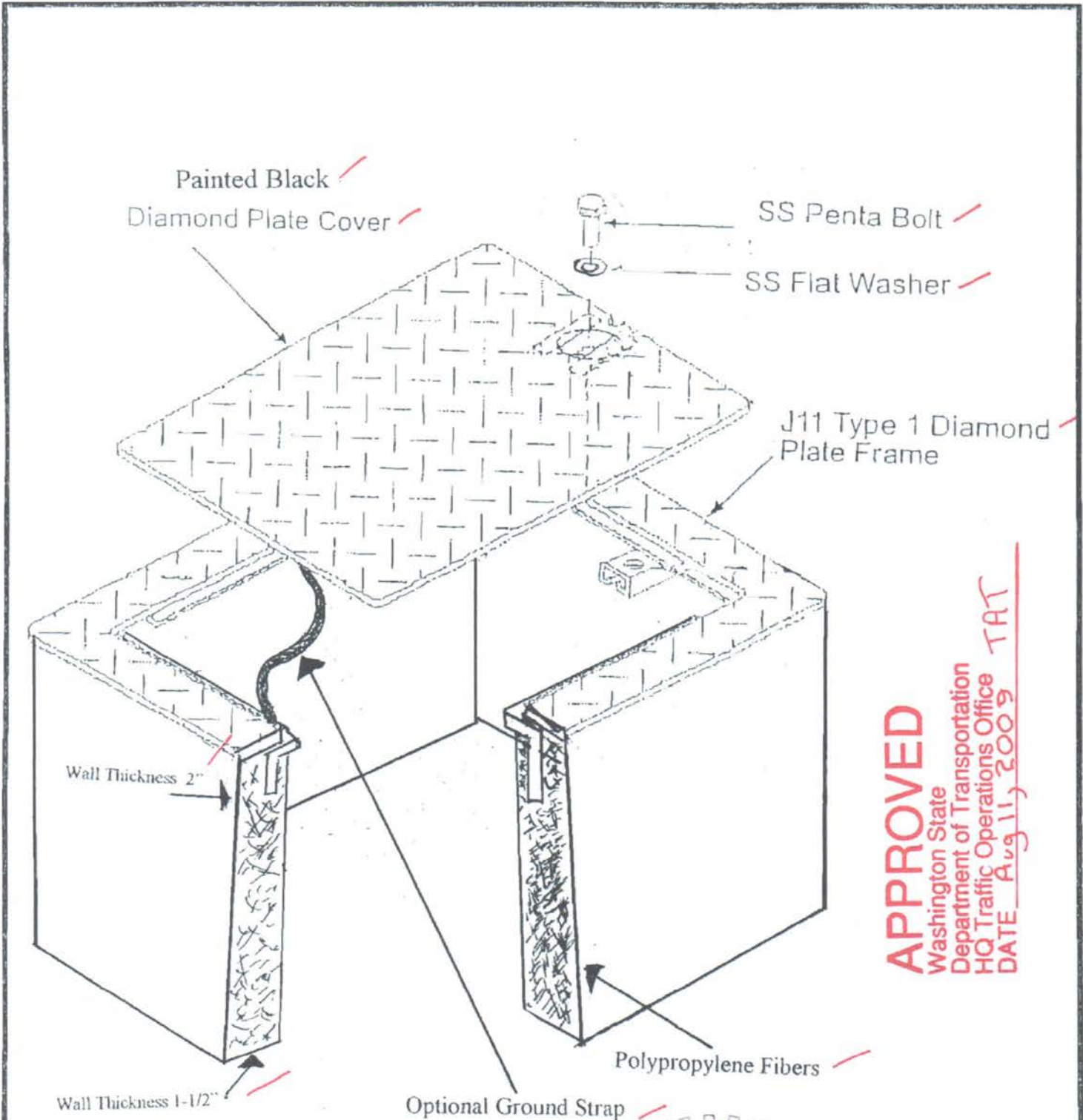
**FOG JITE**  
 INCORPORATED 3/29

**J-11 Type 1 Locking**  
 J-40.10-00

4/29

# FOG TITE INCORPORATED

J-40.10-00  
J-11 Type 1 L



**APPROVED**  
 Washington State  
 Department of Transportation  
 HQ Traffic Operations Office  
 DATE Aug 11, 2009 TAT

Not To Scale



Box O.D- 17" x 22"  
 Box I.D - 14" x 19"  
 Box Height 12"  
 Lid-12-5/8" x 17-3/8"