

InRoads – Renaming InRoads Fieldbook Points

Overview

Occasionally you may need to rename points in the InRoads fieldbook. For example, InRoads allows you to combine two data files with similar point names but the last point added to the fieldbook code and description will overwrite the previous same named point code and description. In most cases this is not what you want to do. A solution is to rename the points before the data is merged.

The **Rename Point** command in the fieldbook editor can rename points or selected points in bulk. The command also can rename stations and observations.

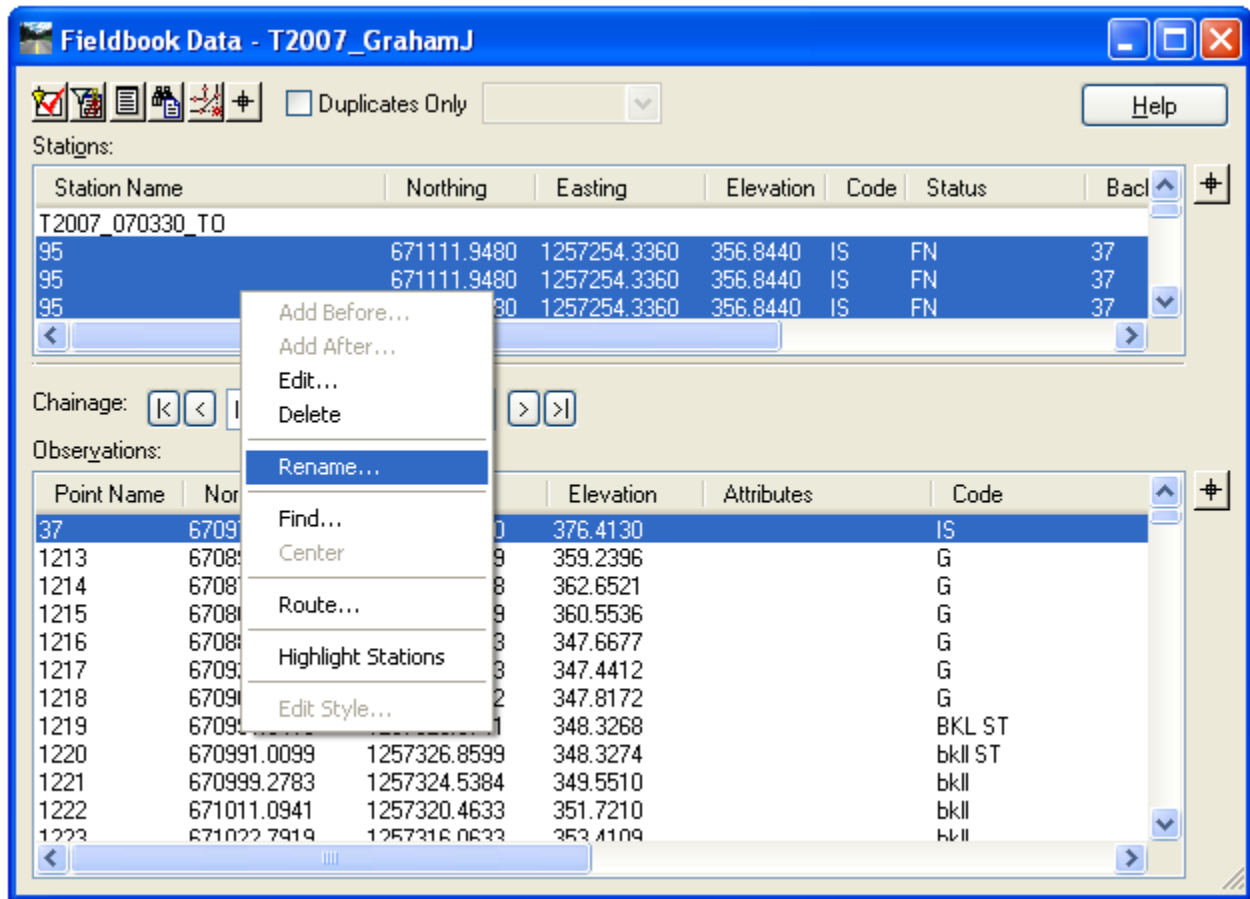
Workflow for Renaming Observations

- Create a fieldbook that will be used to rename observations and merge with master fieldbook.
- Import data
- Edit the fieldbook
- Rename observations
- Save the fieldbook
- Merge fieldbooks with master

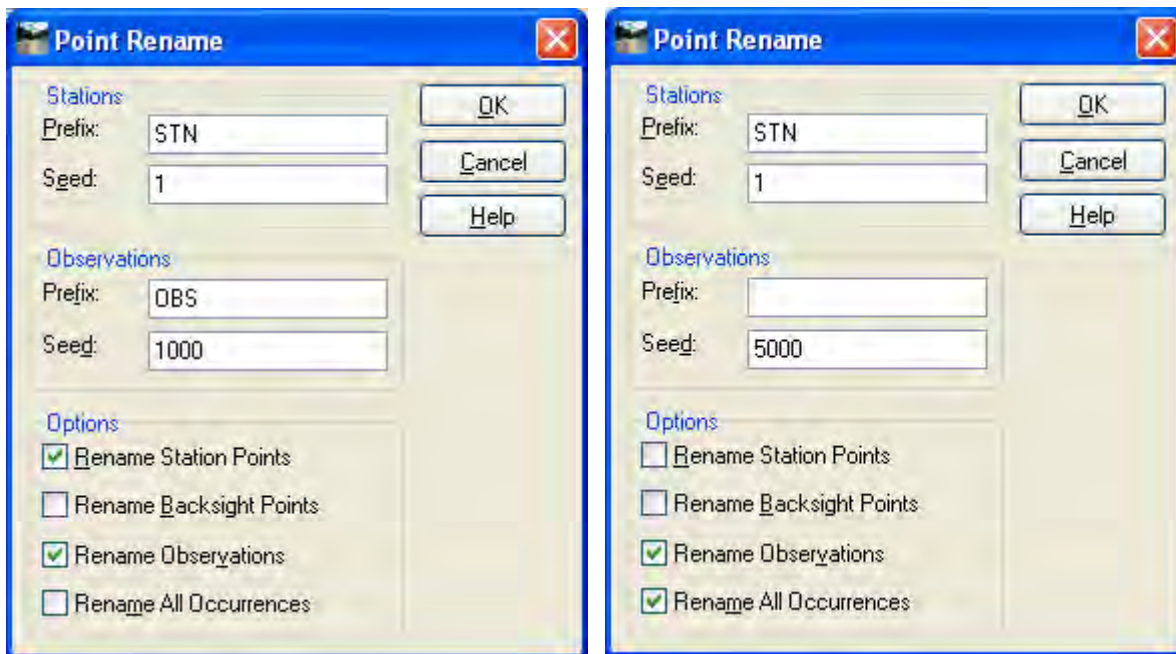
Scenario 1

Rename all observations in the fieldbook. A fieldbook will be created and data will be imported.

1. Select all stations in the *Stations:* area.
2. Right-click on a selected station to access the shortcut menu.
3. Select **Rename** from the shortcut menu.

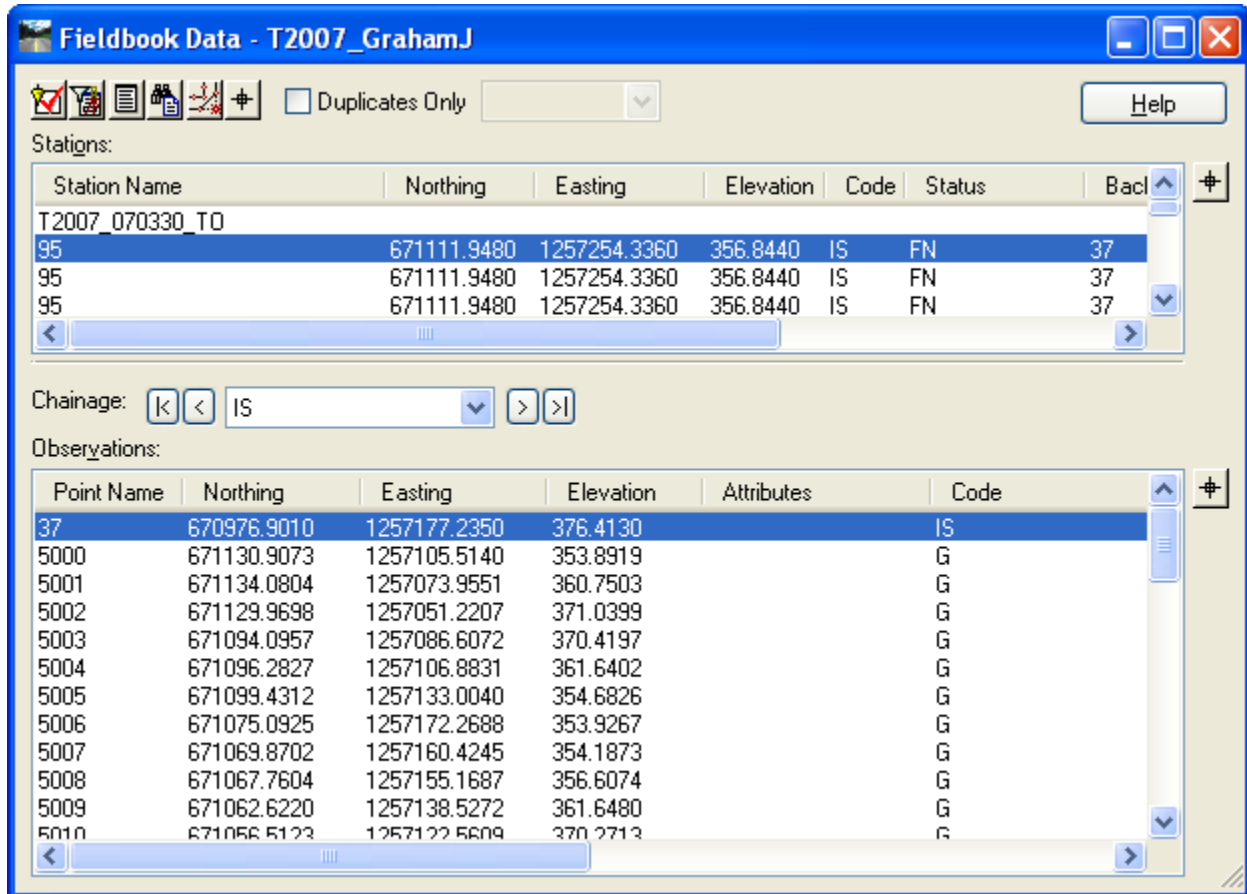


The Point Rename dialog opens.



4. Remove the observation **Prefix**.
5. Enter *5000* or the first renamed point name for the *Observation Seed* field.
6. Disable **Rename Station Points**.
7. Enable **Rename All Occurrences**.
8. Select **OK**.

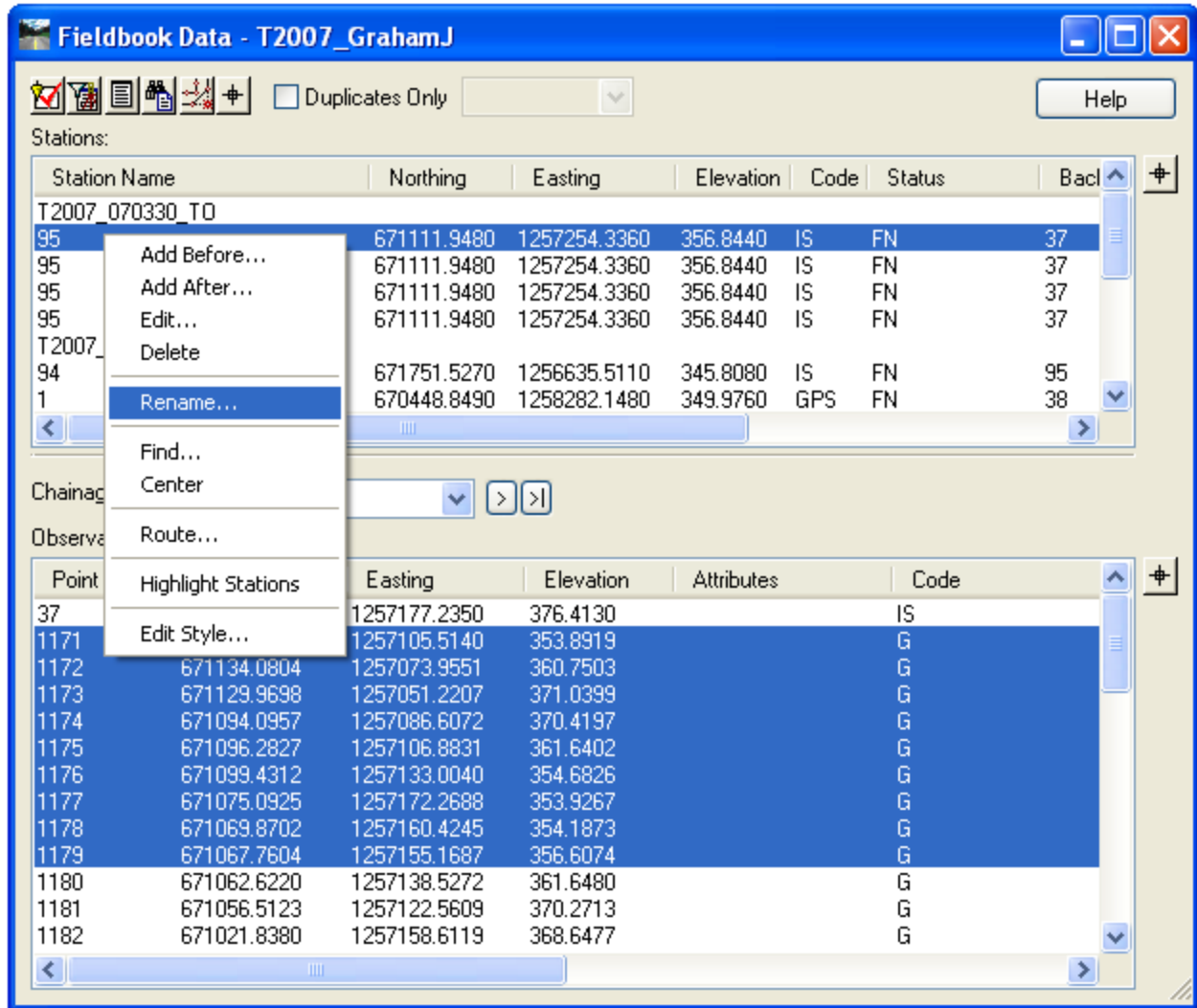
Below is a view of the fieldbook editor after the observation points were renumbered. All stations and backsights have original point names and all observations have been renamed starting with point 5000.



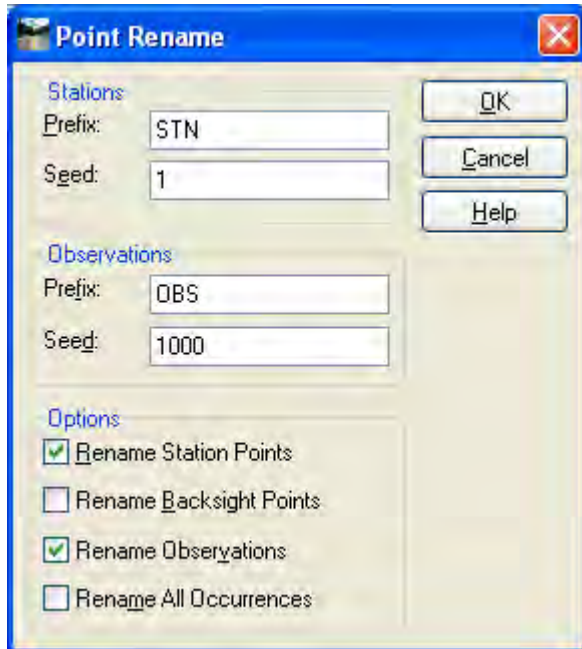
Scenario 2

This process renames a selected observation in the fieldbook.

1. Select the station that contains the observations that you want to rename.
2. Select the observations – observation 1171-1179 have been selected below.
3. Right-click on a selected station to access the shortcut menu.
4. Select **Rename** from the shortcut menu.



The Point Rename dialog opens.



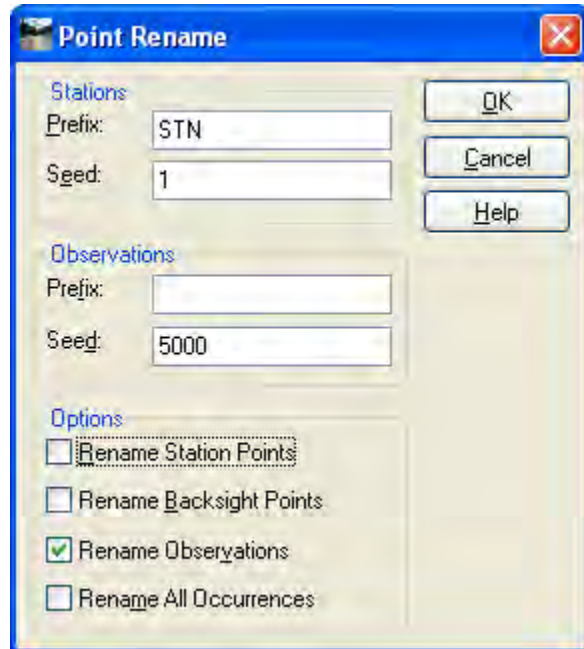
Point Rename

Stations
Prefix: STN
Seed: 1

Observations
Prefix: OBS
Seed: 1000

Options
 Rename Station Points
 Rename Backsight Points
 Rename Observations
 Rename All Occurrences

Buttons: OK, Cancel, Help



Point Rename

Stations
Prefix: STN
Seed: 1

Observations
Prefix:
Seed: 5000

Options
 Rename Station Points
 Rename Backsight Points
 Rename Observations
 Rename All Occurrences

Buttons: OK, Cancel, Help

Remove the observation **Prefix**.

5. Enter *5000* or the first renamed point name for the *Observation Seed* field.
6. Disable **Rename Station Points**.
7. Disable **Rename all Occurrences**.
8. Select **OK**.

Below is a view of the fieldbook editor after observations 1171-1179 were renumbered.

Fieldbook Data - T2007_GrahamJ

Duplicates Only
 Help

Stations:

Station Name	Northing	Easting	Elevation	Code	Status	Back
T2007_070330_TO						
95	671111.9480	1257254.3360	356.8440	IS	FN	37
95	671111.9480	1257254.3360	356.8440	IS	FN	37
95	671111.9480	1257254.3360	356.8440	IS	FN	37
95	671111.9480	1257254.3360	356.8440	IS	FN	37
T2007_070405_TO						
94	671751.5270	1256635.5110	345.8080	IS	FN	95
1	670448.8490	1258282.1480	349.9760	GPS	FN	38

Chainage: IS

Observations:

Point Name	Northing	Easting	Elevation	Attributes	Code
37	670976.9010	1257177.2350	376.4130		IS
5000	671130.9073	1257105.5140	353.8919		G
5001	671134.0804	1257073.9551	360.7503		G
5002	671129.9698	1257051.2207	371.0399		G
5003	671094.0957	1257086.6072	370.4197		G
5004	671096.2827	1257106.8831	361.6402		G
5005	671099.4312	1257133.0040	354.6826		G
5006	671075.0925	1257172.2688	353.9267		G
5007	671069.8702	1257160.4245	354.1873		G
5008	671067.7604	1257155.1687	356.6074		G
1180	671062.6220	1257138.5272	361.6480		G
1181	671056.5123	1257122.5609	370.2713		G
1182	671021.8380	1257158.6119	368.6477		G

For more information on the Fieldbook Editor **Rename Point** command, refer to the InRoads Help file - *Reference Information > Survey > Fieldbook Data > Point Rename* - or contact the CAE Help Desk.

For questions or comments on this tech note, contact your regional CAE Support Coordinator or the WSDOT CAE Help Desk at (360) 709-8013.