

Survey – TopSurv Export to WSDOT ASCII Survey File

SurvCE, InRoads

Overview

The WSDOT ASCII survey format is intended to provide a common standard text format for survey import to WSDOT InRoads. As many data controllers can export this format, it provides an alternative to vendor proprietary formats that may or may not be compatible with WSDOT practices.

The data is formatted in a comma delimited ASCII text file with a txt or csv file suffix in the following order:

PointName, Northing, Easting, Elevation, Code, Note

This process prepares the data for export from the data controller in the WSDOT ASCII survey format for use in InRoads.

Workflow

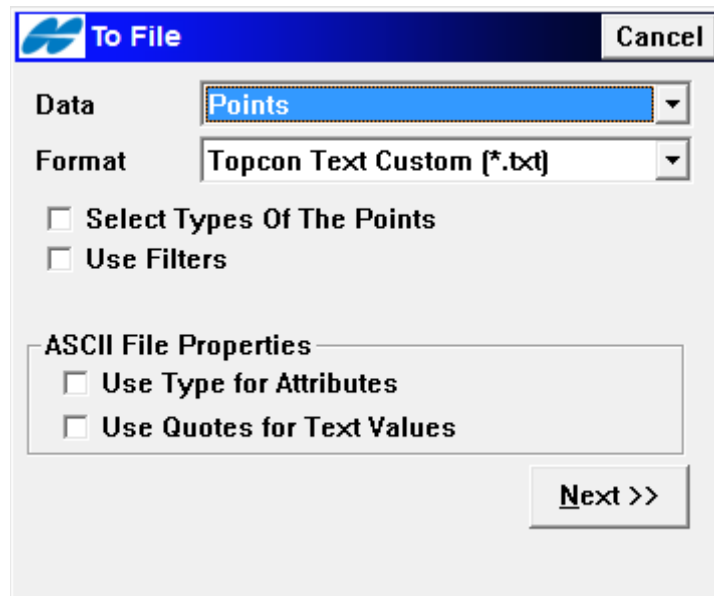
With an existing job on the data controller, export the data as a WSDOT ASCII Survey file format, copy from the data controller to the PC and then import into an InRoads fieldbook.

Export data as WSDOT ASCII Survey file

1. Verify that the correct TopSurv job is selected.
2. In the TopSurv software, select the *Job > Export > to File* command.

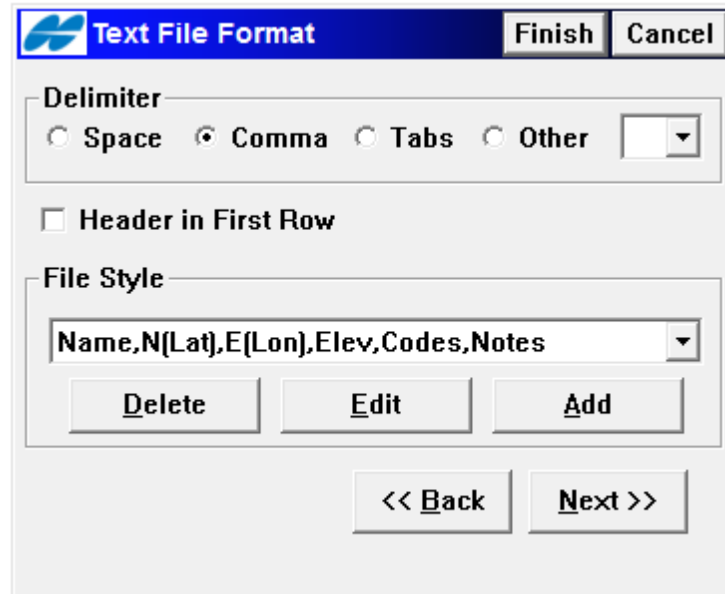
The To File dialog opens

3. Set *Data* to Points.
4. Set *Format* to **Topcon Text Custom (*.txt)**.



The To File Format dialog opens.

1. Verify file name and path, the file to be created should be job name with **txt** or **csv** file suffix.
2. Select the **OK** button.
3. The Text File Format dialog opens.
4. Enable the radio button for **Comma** in the *Delimiter* area.
5. Disable the **Header in First Row** check box.
6. Define the *File Style* as **Name,N(Lat),E(Lon),Elev,Codes,Notes**.



7. Select the **Next>>** button.
The Coordinate System dialog opens.
8. Set *Projection* to **<none>**.
9. Set *Datum* to **WGS84**.
10. Set *Geoid Model* to **WGS84**.
11. Set *Coord Type* to **<none>**.
12. Set *Dist Units* to **US Feet**.

The screenshot shows a dialog box titled "Coordinate System". It has a title bar with a logo and the text "Coordinate System". The dialog contains the following fields and controls:

- Projection:** A dropdown menu set to "<none>" with a "..." button to its right.
- Use Grid to Ground:** An unchecked checkbox with a "..." button to its right.
- Datum:** A dropdown menu set to "WGS84" with a "..." button to its right.
- Geoid Model:** A dropdown menu set to "<none>" with a "..." button to its right.
- Coord Type:** A dropdown menu set to "Ground".
- Dist Units:** A dropdown menu set to "US Feet".
- Buttons:** "Finish", "Cancel", and "<< Back" buttons are located at the bottom of the dialog.

13. Select the **Finish** button.

The file is created in the defined path and name.

The ASCII file is now ready to be copied to the PC.

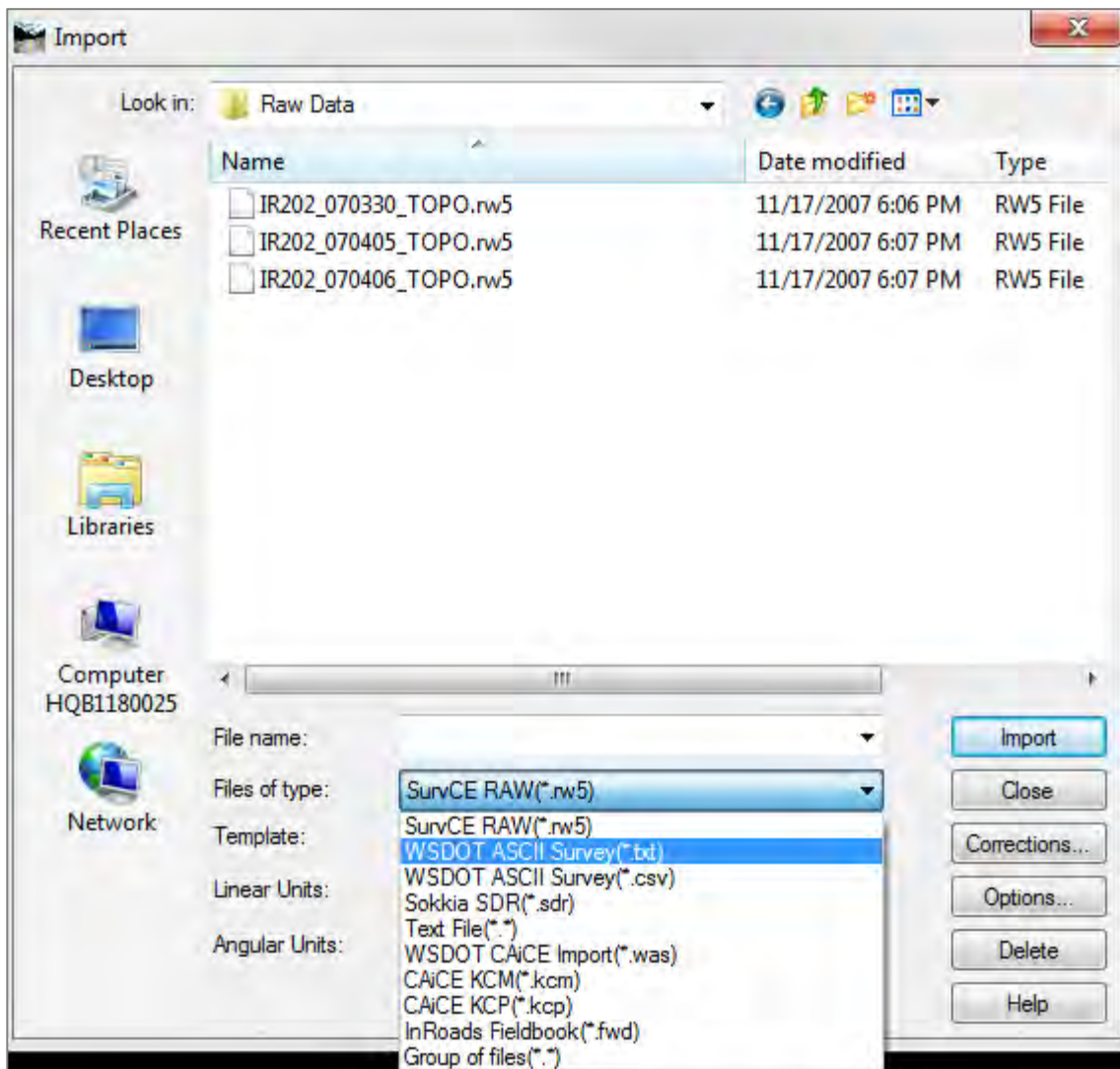
Copy file to PC

Copy all relative SurvCE job files to the CAE Project location. Each SurvCE job contains:

- .tsj – TopSurv job and raw data file
- .gc3 – TopSurv localization file
- .txt or .csv – ASCII export file, formatted in the WSDOT ASCII Survey format.

Import Fieldbook

1. Open InRoads.
2. Create or open an existing fieldbook.
3. Right-click on fieldbook and select **Import**.
4. Navigate to the file location.
5. Set *File of type:* to **WSDOT ASCII Survey (*.txt)** or if file was named with a csv file suffix set *File of type:* to **WSDOT ASCII Survey (*.csv)**



6. Select the file to be imported in the fieldbook.

7. Select the **Import** button.

The selected file is imported into the active InRoads fieldbook.

8. Verify data in fieldbook.

For questions or comments on this tech note, contact your regional CAE Support Coordinator or the WSDOT CAE Help Desk at (360) 709-8013.