

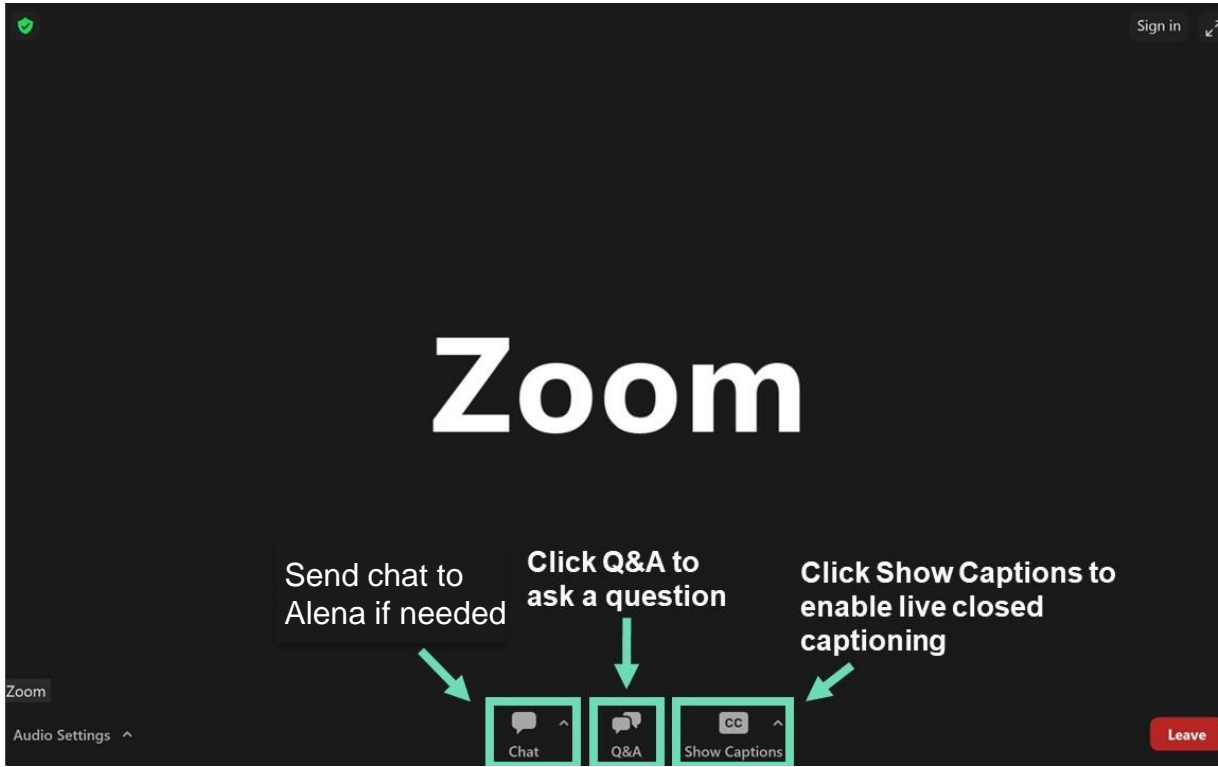
# I-405/Northeast 85th Street Interchange and Inline BRT Station Project

## Construction updates

March 2024

This meeting is being recorded. The recording will be sent to meeting registrants via email and posted on the project webpage.

# Zoom controls



Alena is our meeting host

Please use the chat feature to message Alena or call her if you have any technical difficulties:

**425-224-2423**

# Welcome & introductions

- **Francis Choe**, Meeting Facilitator, Graham Communications
- **Chris Cooper**, Graham Construction Management
- **Steven M. Beadle, PE**, WSDOT Project Engineer
- **Paul Cornish**, Sound Transit Strategic Projects Director
- **Elizabeth Guevara**, Sound Transit Community Engagement Consultant
- **John Starbard**, City of Kirkland Deputy Director of Public Works Department
- **I-Wen Yang**, City of Kirkland Senior Project Engineer
- **Diana Barreto**, WSDOT Communications Lead
- **Alena Rinehardt**, Meeting Support, Graham Communications
- **Jack Irwin**, Meeting Support, Graham Communications

# Agenda

Project overview and benefits

Bus Rapid Transit (BRT)

Construction updates

- Schedule (2024 – 2026)
- What's completed or in progress? What's next?
- What you can expect during construction

Keeping the community informed

- Outreach efforts
- Real-time travel map and app

Stay in touch!

Questions?

---

# Poll questions

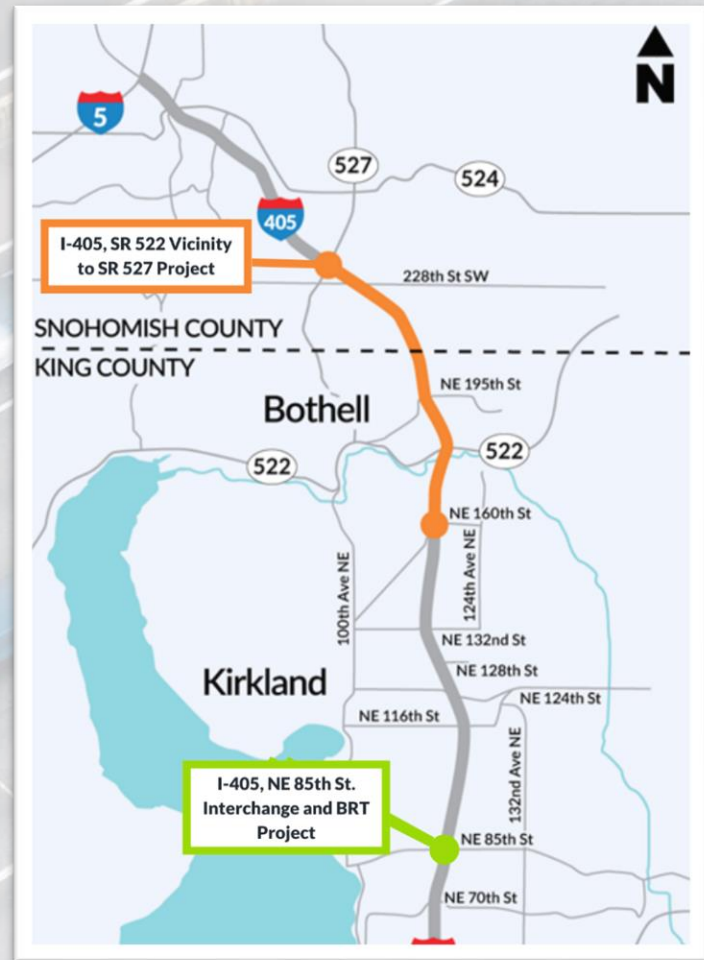
**Before we start, we want to hear from you**

---

# Project overview

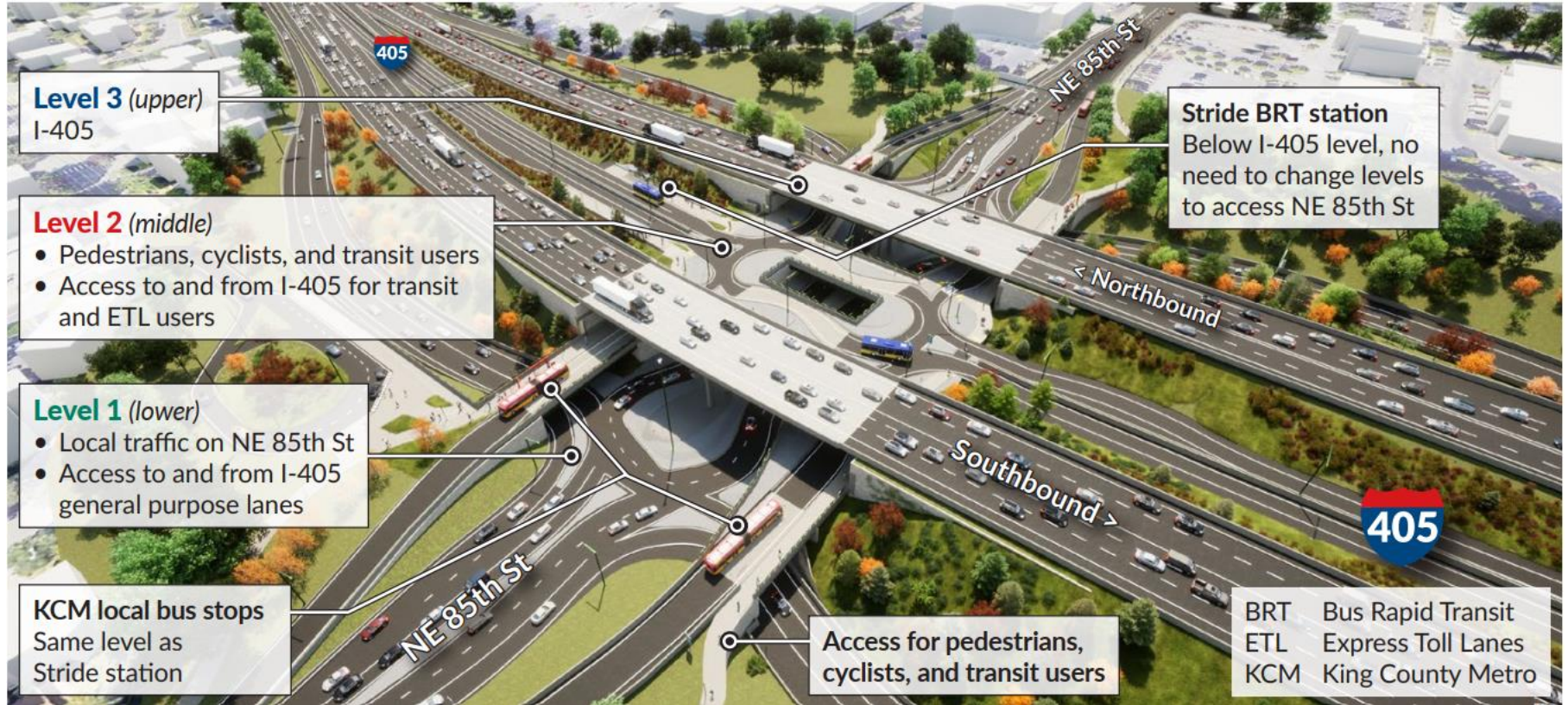


# Coordinated Projects on I-405 Corridor





# The future of Northeast 85th Street



**Level 3** (upper)  
I-405

**Level 2** (middle)

- Pedestrians, cyclists, and transit users
- Access to and from I-405 for transit and ETL users

**Level 1** (lower)

- Local traffic on NE 85th St
- Access to and from I-405 general purpose lanes

KCM local bus stops  
Same level as  
Stride station

Stride BRT station  
Below I-405 level, no  
need to change levels  
to access NE 85th St

Access for pedestrians,  
cyclists, and transit users

BRT	Bus Rapid Transit
ETL	Express Toll Lanes
KCM	King County Metro



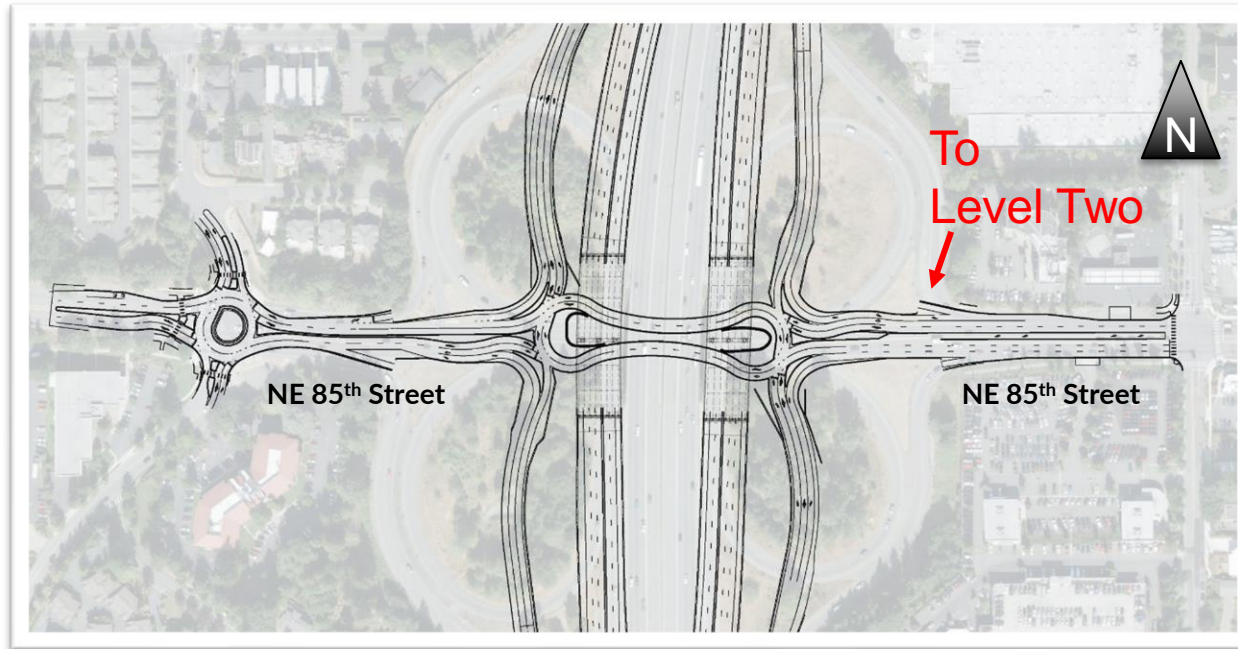
# Northeast 85th Street and I-405

## Level One

- Below existing NE 85th St elevation
- Passenger and truck traffic

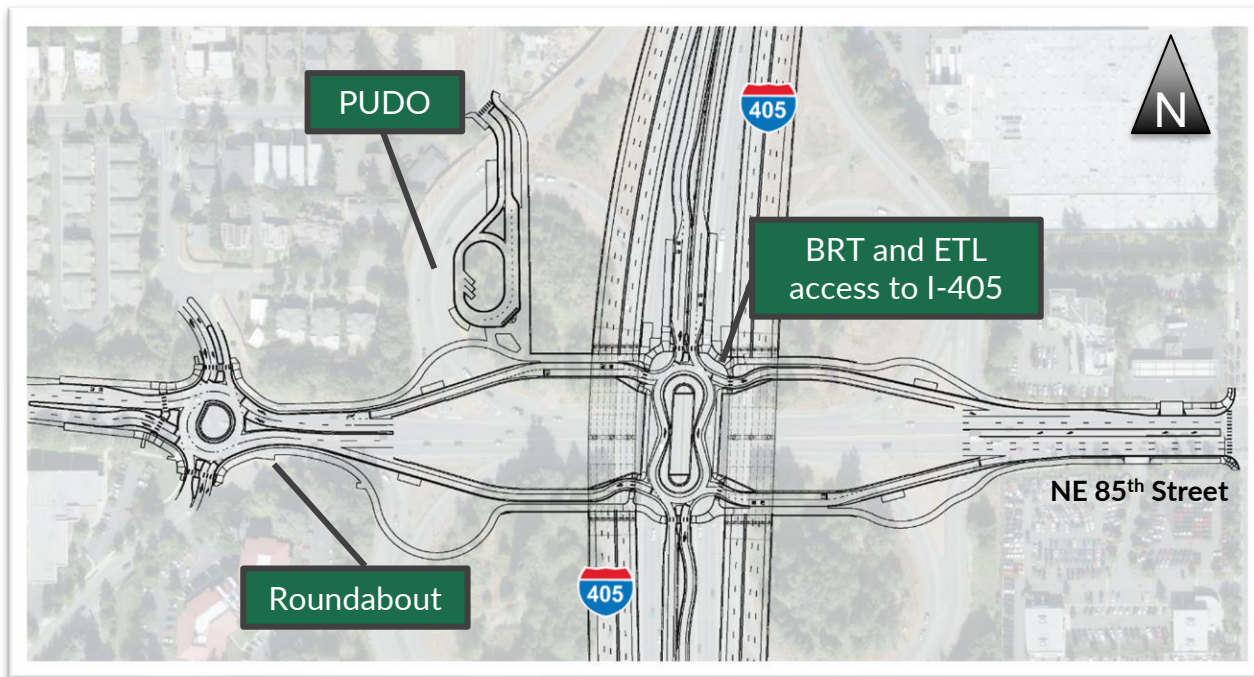
## Level Three

- At existing I-405 elevation
- Freeway traffic



## BRT, ETL, and Pedestrians

The new middle level includes access for Bus Rapid Transit (BRT), Express Toll Lanes (ETL), the Pick-Up-Drop-Off (PUDO), new roundabout, and access for people who walk, bike, or roll. This level is at the existing Northeast 85th Street elevation.



# *Stride*

*Bus Rapid Transit (BRT)*

# Baseline schedule

## Capital program:

- S3 100% design, out for bid 2024
- S1 and S2 90% design
- Right-of-way acquisition underway

## Partnerships (WSDOT & others)

- Underway (\$590m+)
- Construction complete (~\$30m)

## Active & upcoming procurements:

- Fleet and systems
- Stations, shelters, furnishings, systems
- GEC contract capacity

	Baseline
Bus Base North	Q4 2027
S1 (I-405 South)	Q3 2028
S2 (I-405 North)	Q2 2029
S3 (SR-522)	Q2 2028

# Program status



- Stations, shelters, furnishings, systems
  - Sound Transit has procured a General Contractor Construction Manager (GCCM), Hoffman Construction Co., to assist us with construction advice as we complete design.
- Roadway and platform work along the S3 line (formerly 522 BRT) is at 100% design.
- Looking to begin advertising for three construction contracts by the end of the year.
- ST-delivered projects design along S1/S2 (formerly I-405 BRT) is progressing roughly 90% design.
- Battery Electric Buses have been ordered.
- Bus Base at 100% design.



---

# Construction updates

# Project schedule

Schedule updated March 2024. Subject to change.

Near completion:  
December 2026

## Design

February 2023 – June 2024



★ We are here

## Early Construction

August 2023 – January 2024



## Phase 1



Existing Traffic Alignment

## Phase 2



I-405 Traffic on new Alignment

## Phases 3 and 4



85th Traffic to DA Alignment

## Phase 5



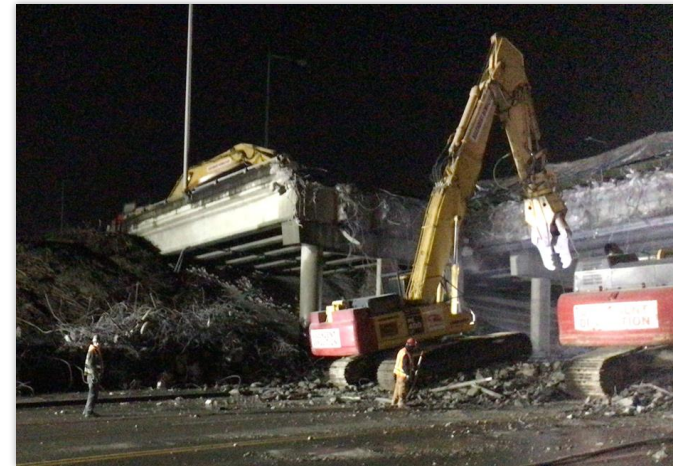
All traffic to new alignments





# Completed activities

- ✓ **ITS System:** Installed 21,000lf of fiber optic, two new ramp meters, two new cameras, five micro-tunnels.
- ✓ **Realigned Existing Ramps:** Completed excavation, grading and paving to allow for the realignment of the existing I-405 ramps.
- ✓ **85th Street Temporary Signals & Alignment:** Installed two temporary signals, closed clover-leaf ramps and added turn lanes.
- ✓ **Removed Collector-Distributor Bridges:** During a weekend closure, crews removed the existing collector-distributor bridge, piers and abutments.



# In progress activities

- ✓ **Water Line Jack & Bore:** Installing 500lf of 52" steel casing across I-405. The line is 20' deep and runs from Northeast 87th Street to near Costco.
- ✓ **Water Line Vault:** The vault excavation is 40' long and 24' deep. The future vault will hold a 24" pressure-reducing water valve.
- ✓ **Temporary Walls:** Construction of four temporary soil nail walls to support the existing I-405 roadway. The temporary walls will allow for the construction of the new I-405 bridge abutments.

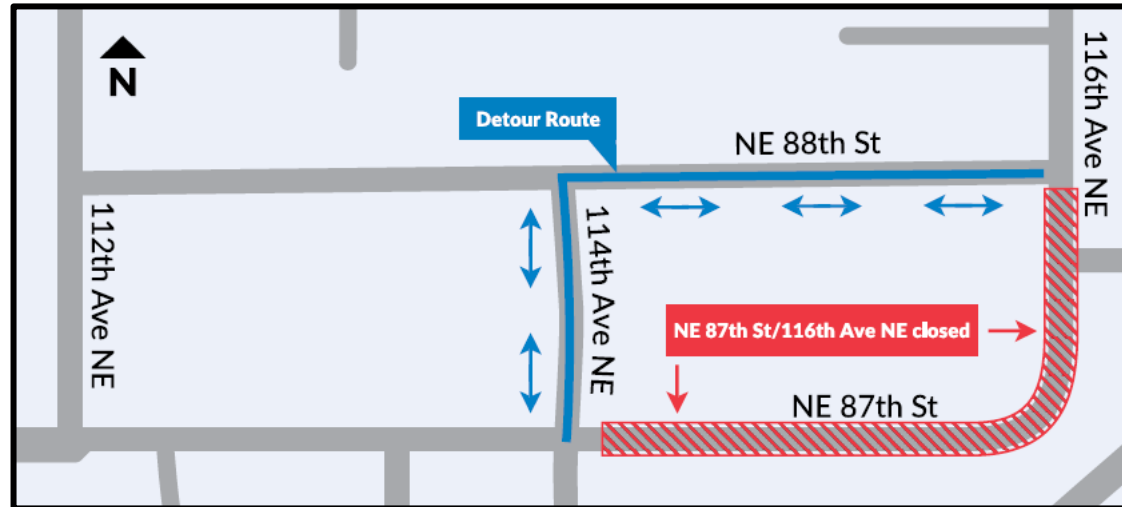


# In progress activities: Northeast 87th Street closure

## ✓ Full Closure Mid-April - June

- Installation of 20' deep drainage
- Installation of 24" watermain
- Vault construction
- Watermain tie-in

## ✓ Detour route to Northeast 88th Street & 114th Avenue Northeast



*Northeast 87th Street closure area and detour route*

# What's next → wall & bridge construction

March 2024 – June 2024:

- Four MSE walls
- Bridge abutments
- Shaft construction
  - Realignment of Northeast 85th Street turn lanes
- Water line construction



# Looking ahead in 2024

## April – June 2024:

- **Weekend closure, 85th Street shaft construction:**

Over one weekend, we will close both directions of Northeast 85th Street to change how drivers get on and off I-405 ramps and turn on new temporary signals.

- **Single and double-lane closures of NE 85th Street:**

To install the water line and bridge elements, crews must close lanes of Northeast 85th Street. Other than the weekend closures for the shaft work, east and west-bound travel will not be closed.

# Temporary signal operations

- The City of Kirkland and WSDOT coordinated signal timing during implementation and will continue to monitor operations.
- Peak hours and regional traffic impacts will stress operations.
- Consider taking alternate routes or traveling through the area during off-peak times.





# What you can expect during construction

- Weekday, weekend, and night work
- Lane closures
- Northeast 85th Street closures (partial and full closures)
- I-405 ramp closures
- Signed detours and flaggers
- Noise and vibrations





---

**Stay in touch!**

# How we're keeping Kirkland informed



- Road signs
- Mailed materials and information
- Briefings, meetings, and pop-up events
- Email and website updates
- Quarterly project updates on Zoom
- Poster and flyer distribution
- Coordination and meeting with businesses near the project site

**Stay informed by  
subscribing to email  
updates.**

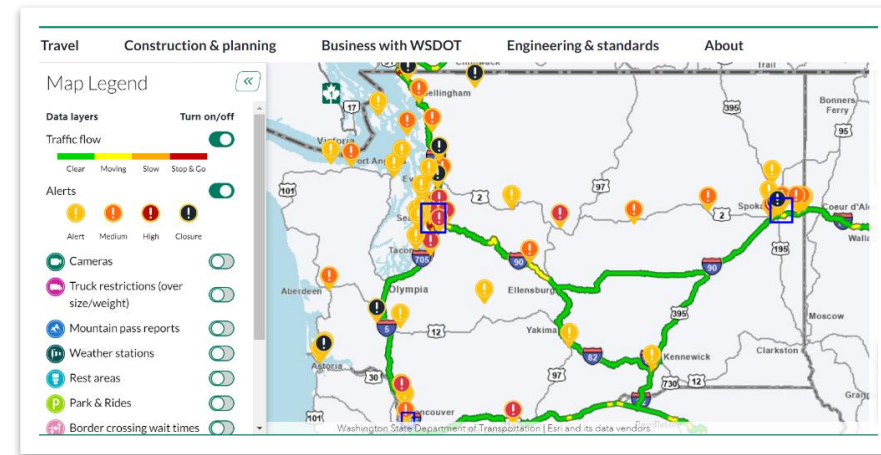
**Updates include:**

- Closures
- Lane shifts
- Nighttime or other potentially disruptive work
- Changes in work hours
- Construction milestones

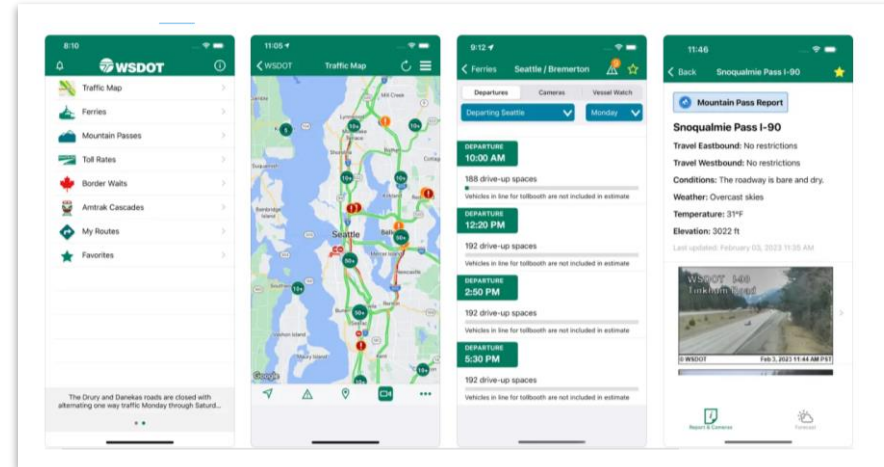
[I405SR167Program@wsdot.wa.gov](mailto:I405SR167Program@wsdot.wa.gov)

# For the most up-to-date travel impacts:

- Visit our real-time travel map: <http://wsdot.com/travel/real-time>



- Download the WSDOT mobile app: Just type in the term "WSDOT" in [Google play](#) or [the App Store](#) to download the WSDOT app.



# How to stay updated



Email us:  
**[I405SR167Program@wsdot.wa.gov](mailto:I405SR167Program@wsdot.wa.gov)**

Email us to be added to the 85th project updates list.

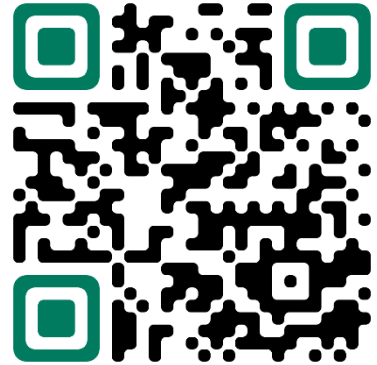


Visit the website:  
**[bit.ly/85th-interchange-BRT](https://bit.ly/85th-interchange-BRT)**



Call our construction hotline:  
**425-224-2423**

Monitored weekdays, 8 a.m. – 5 p.m.

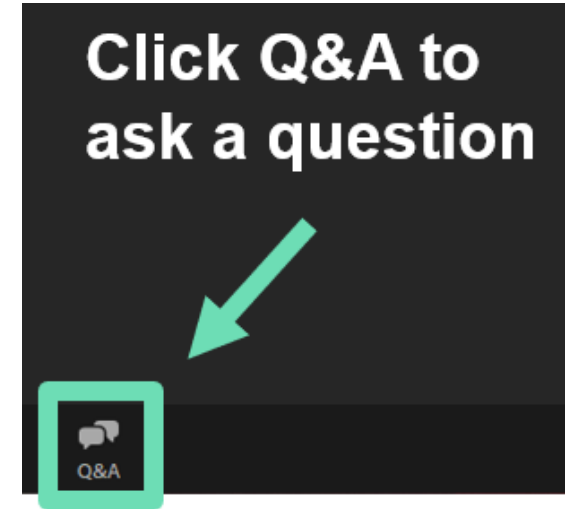


# Questions, comments, or concerns?

## Submit a question via Zoom Q&A window

- Keep questions focused on this project
- Submit your questions as short, complete sentences
- We will answer as many questions as possible by 1:30 p.m.

Questions specific to an individual situation can be difficult for us to answer now. You can call or email our team after the meeting to get these types of questions answered. We are here to help!



 425-456-8585 (general program info.)  
425-224-2423 (project hotline)



1405SR167Program@wsdot.wa.gov



[bit.ly/85th-interchange-BRT](https://bit.ly/85th-interchange-BRT)

**Thank you for  
joining us today!**