

Montlake Project

Monthly Construction Update

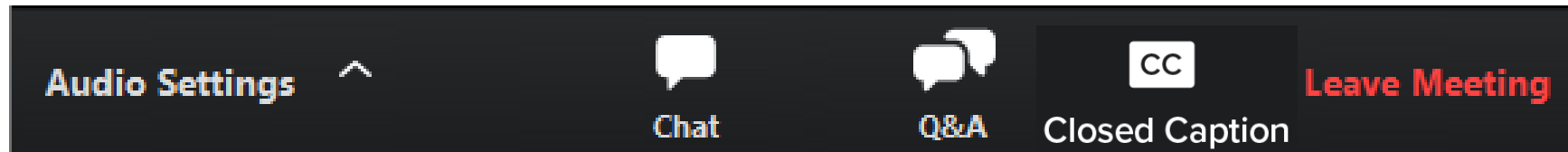
April 17, 2024

How to participate in the webinar

All attendees are muted.
To adjust your audio settings during the meeting, click on **Audio Settings**.



Please use the **Q&A window** to ask questions or offer comments.



CHAT is disabled during the presentation. Please communicate with the team through the **Q&A window**.



Turn on **closed captions** if you want to view captions during the meeting. They are available in English only.



Agenda

- Current and upcoming work
- How to stay informed
- Comments and questions



Major project elements

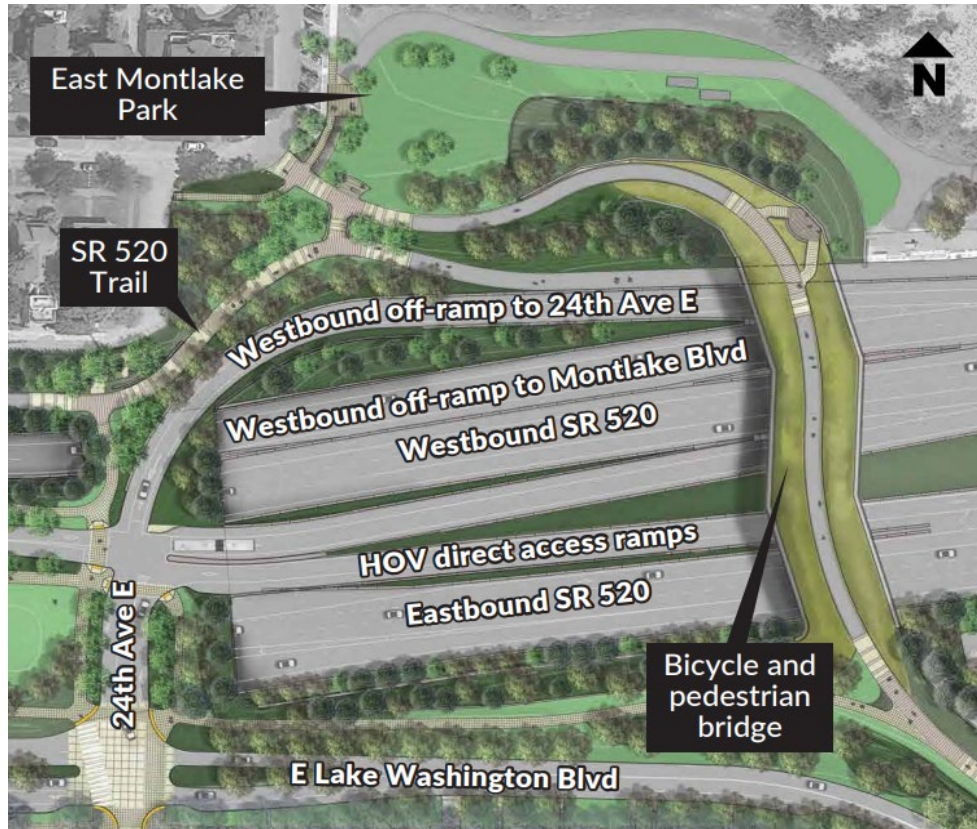
The Montlake Project will improve transportation for motorized and nonmotorized travel along the SR 520 corridor, including:

- A new eastbound bridge
- Montlake lid
 - HOV and bus lane
 - On and off ramps
- Bicycle and pedestrian bridge and connecting pathways



Project milestones

June/July 2024 – HOV direct access ramps will open to the public.



HOV direct access ramps work zone



HOV direct access ramps (March 26)

Project milestones

July 2024 – Bicycle and Pedestrian Bridge over SR 520 connecting Lake Washington Boulevard to East Park Drive will be open to the public.



Visualization of bicycle and pedestrian bridge



Bicycle and pedestrian bridge deck (March 26)

Project milestones

July 2024 – The Bill Dawson Trail will be connected to the pathway on the east and west sides of Montlake Boulevard through the shared-use tunnel. The trail will extend to the Bicycle and Pedestrian Bridge.



West entrance to the tunnel under Montlake Boulevard (March 26)

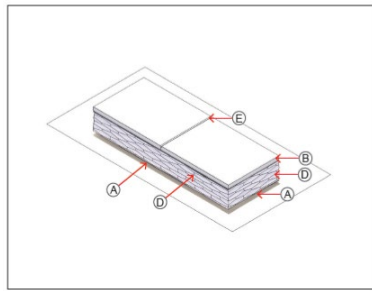
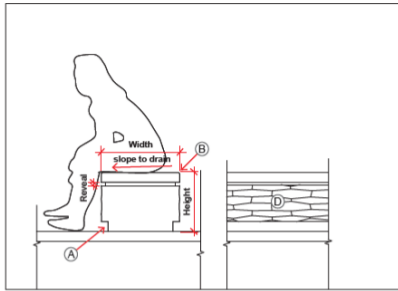
Project milestones

July 2024 – Complete sidewalks, trails, and landscaping on the Montlake lid and open it to the public.

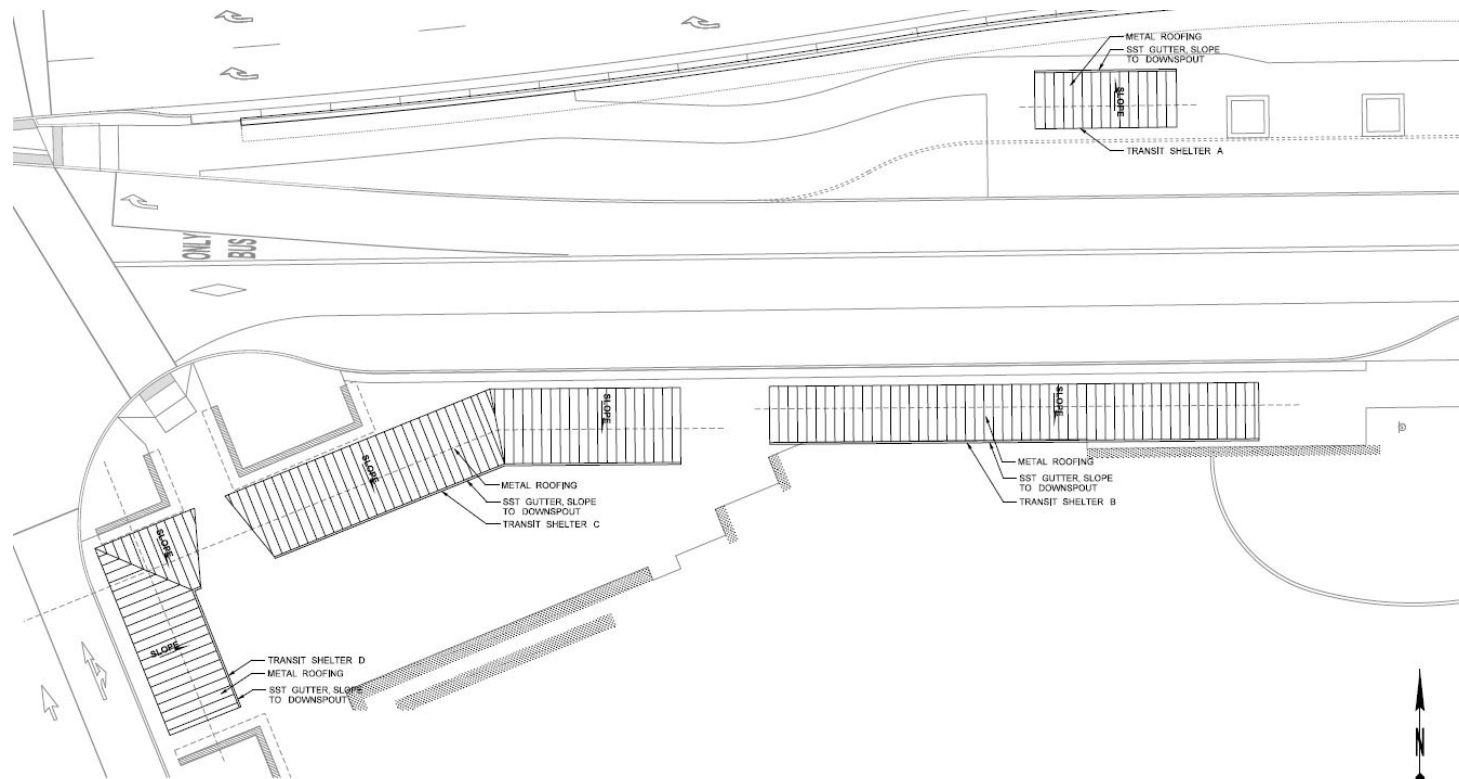


Montlake lid – west end (March 26)

Project Milestones

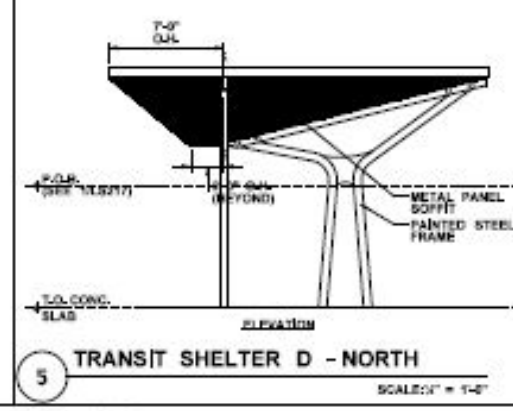
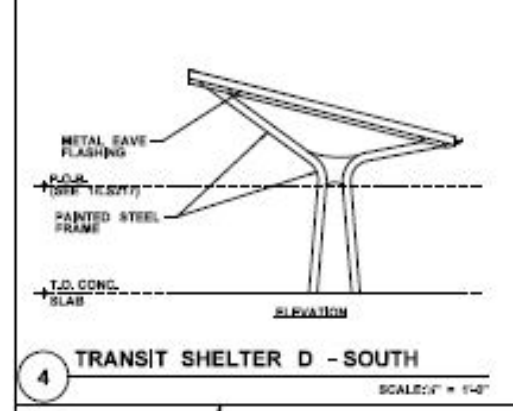
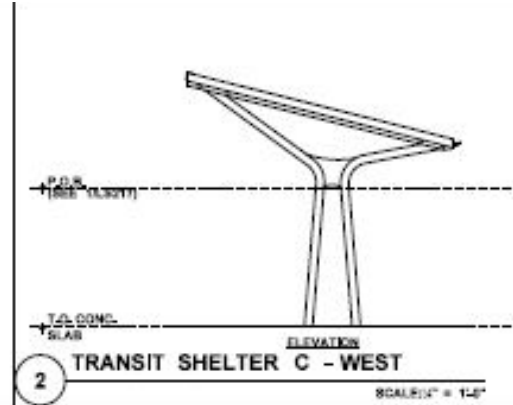
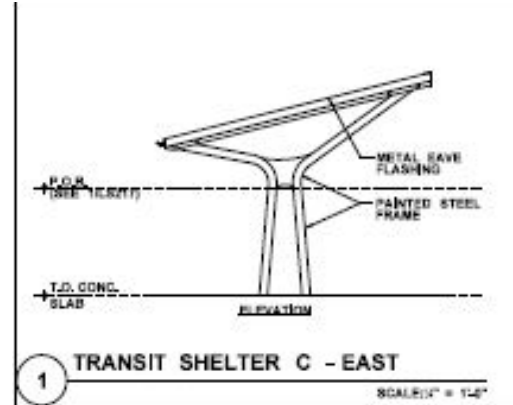


Project Milestone: Lid Transit Canopies



1 TRANSIT SHELTER ROOF PLAN

RELEASED FOR CONSTRUCTION
 Signed: [Signature] Design Quality Assurance Manager



Project Milestones



Montlake Boulevard



Lake Washington Blvd.

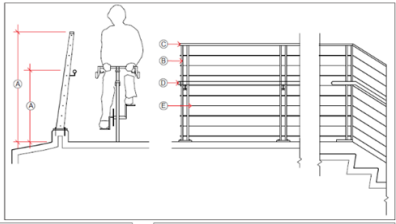


24th Ave & HOV lighting

Bicycle and pedestrian bridge construction



SR520 Lighting



SR520 Railing



SR520 Bench



Achillea spp. (Yarrow)
3'-4' ht.



Agropyron spicatum (Bluebunch
Wheatgrass) 1.5'-4' ht.



Allium cernuum (Nodding
Onion) 1'-3' ht.



Clarkia amoena (Godetia 'Farewell to Spring')
0.5'-3' ht.

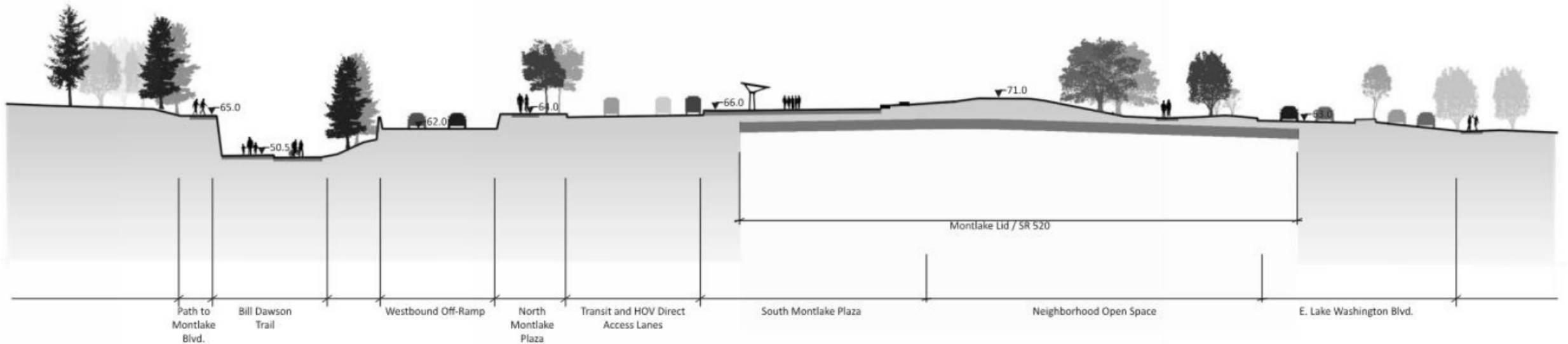


Coreopsis lanceolata (Lance-leaf Coreopsis)
2' ht.

Note: Examples of fixtures only. Items may vary.

Spring 2024 Project Milestones

Cross section of Montlake lid, looking east



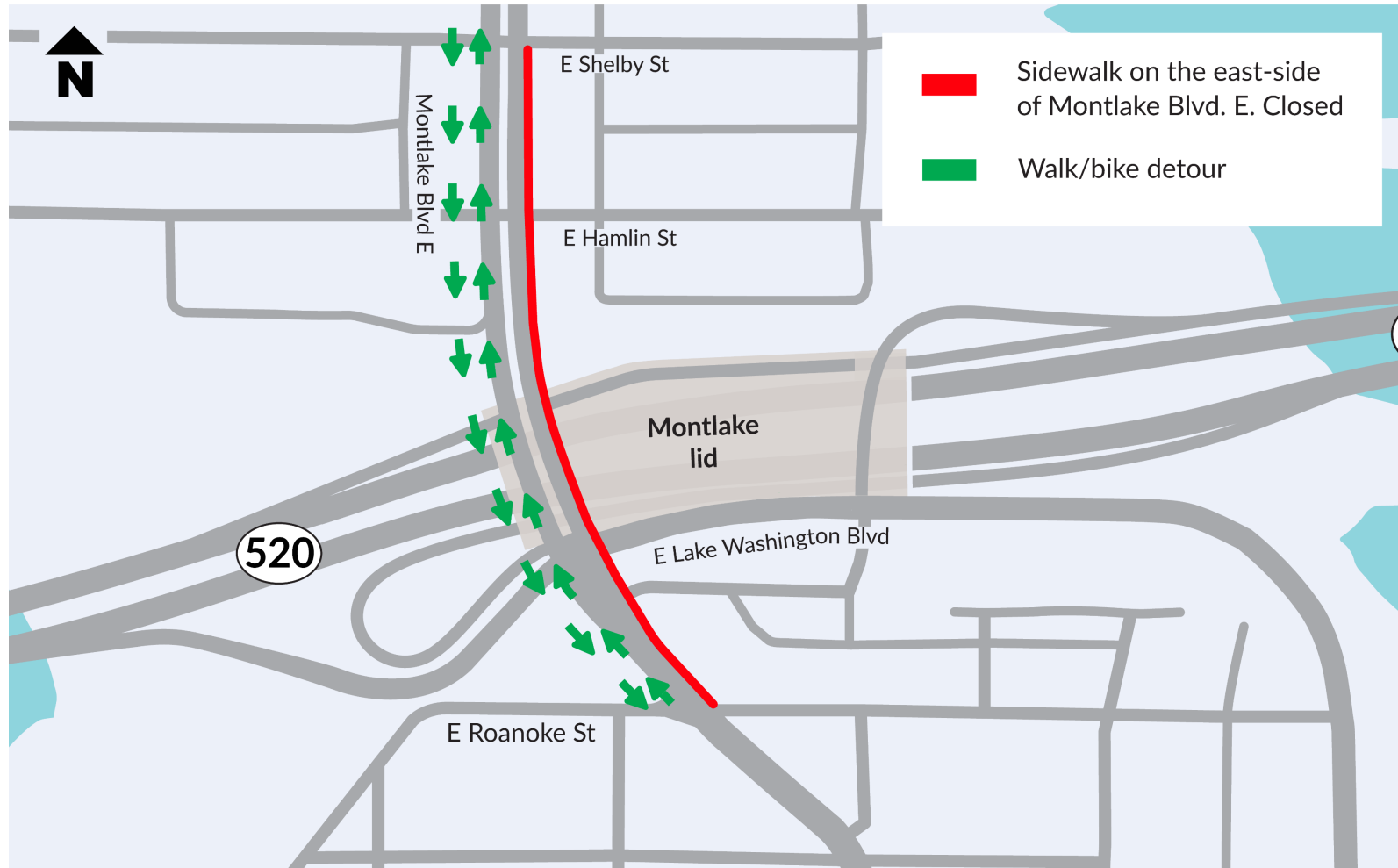
Arboretum ramp removal



Removal of the old Arboretum ramp began the week of Feb. 12 and continued through the end of March.

Upcoming closure: Montlake Blvd. sidewalk

Montlake sidewalk closure: Saturday, April 20, 7 a.m. to 7 p.m.



Upcoming closure: Montlake Blvd.

Roanoke St., Lake Washington Blvd. & ramps also closed

Montlake closure: 10 p.m. Friday, April 26 to 5 a.m. Monday, April 29



What to expect: Noise and vibration

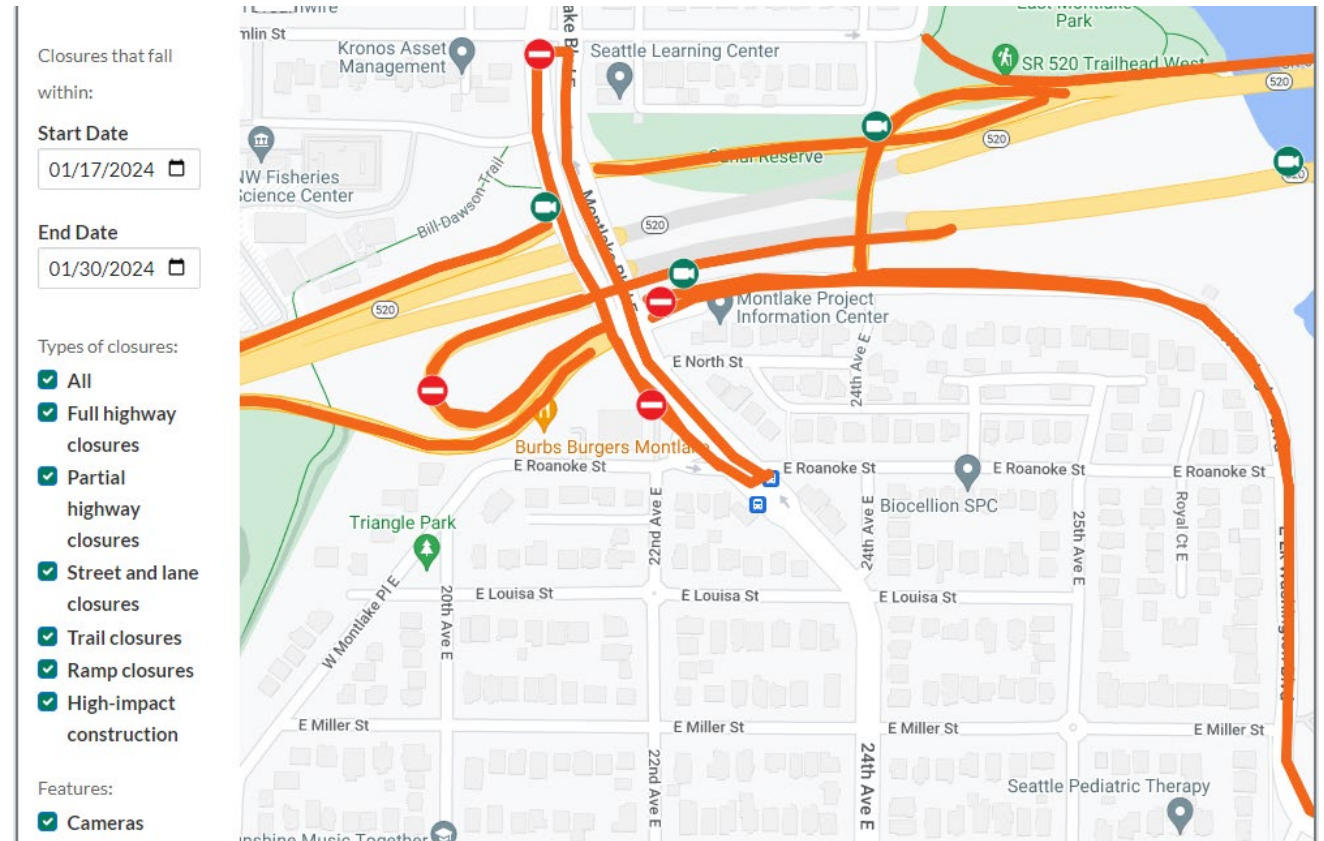
- Different types of equipment result in different levels and kinds of noise and vibration.
- Electronic noise and vibration meters record levels throughout the project area.
- Vibration monitors collect data in the field and immediately alert the project team when readings are outside the set tolerances.
- Nighttime construction has stricter rules for noise levels and equipment use.
- We've received a Major Public Project Construction Noise Variance (MPPCNV) permitting higher than normal decibel levels between the hours of 10 p.m. and 7 a.m.
- Crews may work 24 hours a day, seven days a week throughout construction.
- Typical work hours for the loudest work:
 - 7 a.m. to 10 p.m. weekdays
 - 9 a.m. to 10 p.m. weekends and holidays
 - Impact pile driving has stricter work hours and will occur:
 - 8 a.m. to 5 p.m. weekdays
 - 9 a.m. to 5 p.m. weekends
- Independent noise monitors will be present for night work to ensure compliance with specified noise levels.

Our 24-hour hotline, **206-775-8885**, is the best way to report noise and vibration concerns and to have questions addressed in the moment.

Visit the SR 520 Construction Corner to view the MPPCNV, read up on the allowable nighttime decibel levels, or read our weekly noise report:
www.sr520construction.com/ManagingConstructionEffects

How to stay informed

- Call our 24-hour hotline: [206-775-8885](tel:206-775-8885)
- Email us with questions: sr520bridge@wsdot.wa.gov
- Visit the Montlake Project website: https://bit.ly/520montlake_program
- Visit the SR 520 Construction Corner to learn more about upcoming construction: www.sr520construction.com
- Follow us on Twitter: [@wsdot_520](https://twitter.com/wsdot_520)
- Sign up to receive our email updates at sr520bridge@wsdot.wa.gov
- Watch construction in “real time” on construction cameras: <http://bit.ly/520cams>
- Participate in our online meetings and events



Example of Construction Corner map



Comments and questions?