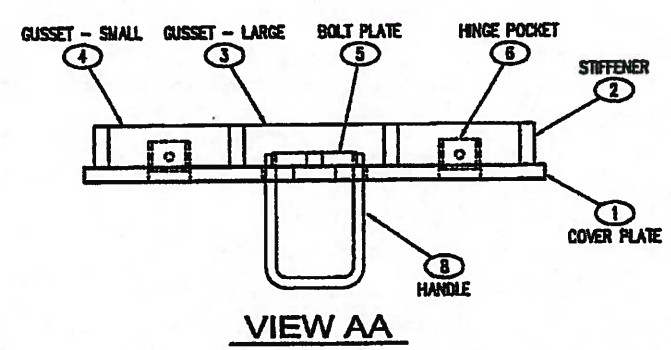


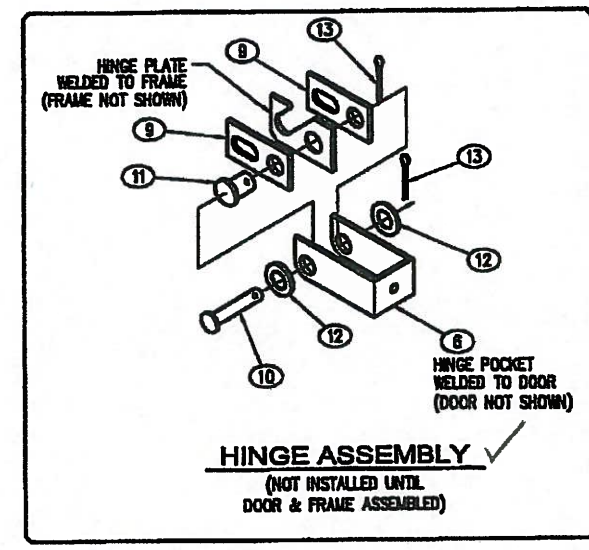
PLAN VIEW
TYPE 5 DOOR - LAYOUT
(UNDERSIDE OF DOOR)
COMPLETE SET = (2) DOORS



VIEW AA

STRUCTURAL NOTES

- MATERIAL: ASTM A36 STRUCTURAL STEEL STANDARDS
- ASSEMBLY: AWS D1.1 WELDING STANDARDS
- MATERIAL FOR LID, FRAME & GUSSET:
LID: ASTM A786 DIAMOND PLATE ROLLED FROM PLATE COMPLYING WITH ASTM A572, GRADE 50 OR ASTM A588, BOTH WITH MIN. CVN TOUGHNESS OF 20 ft-lb AT 40° F
FRAME & STIFFENER PLATES: ASTM A572, GRADE 50 OR ASTM A588, BOTH WITH MIN. CVN TOUGHNESS OF 20 ft-lb AT 40° F
HANDLE: ASTM A36 STEEL
ANCHORS (STUDS): SECTION 8-08.15
BOLTS, NUTS, WASHERS: ASTM F593 OR A193, TYPE 304 OR 316



VERIFIED
Washington State Department of Transportation
HQ Traffic Operations Office
BY: [Signature] DATE: 11/14/10

APPROVED
Washington State
Department of Transportation
HQ Traffic Operations Office
DATE August 8, 2007 TAT

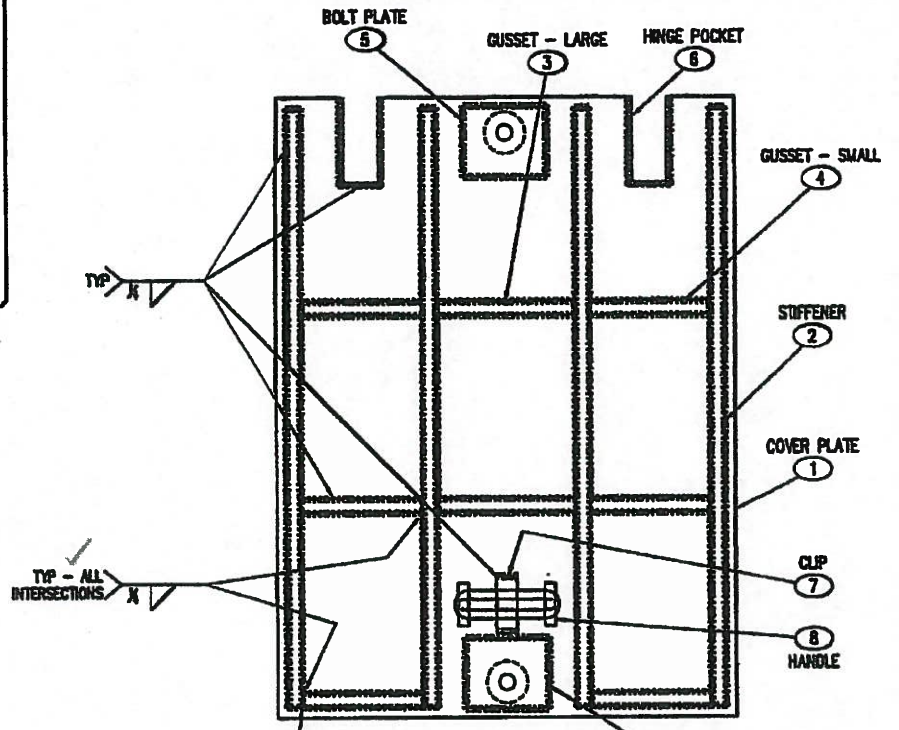
SHOP NOTE:
GRIND ALL SHARP EDGES

TOLERANCE NOTE:
OVERALL DIMENSIONS HAVE A MAXIMUM ALLOWABLE TOLERANCE OF $\pm \frac{1}{16}$ "

NOTES

- COVER TO BE PAINTED AFTER FABRICATION
- ALL WELDS TO BE 3/16" FILLET WELDS UNLESS OTHERWISE NOTED
- (2) DOORS MAKE (1) COMPLETE SET
- ASSEMBLY PARTS PROVIDED BY WILSONVILLE (NOT SHOWN):
9 SS HINGE SIDE PLATE
10 SS HINGE PIN
11 SS HINGE PIN
12 SS WASHER
13 SS COTTER PIN
14 SS RETAINING BOLT

REV.	REVISION	DATE	BY
A	REVISED BOM	10/4/04	JG
B	REVISED PER CUSTOMER RED MARKS	2/15/05	JG
C	REVISED BOM	4/6/05	JG
D	REVISED BOM	1/22/07	TMB
E	NO CHANGES	2/5/07	TMB
F	REVISED BOM	3/2/07	TMB
G	ADDED HINGE ASSEMBLY DETAIL	4/17/07	TMB
H	NO CHANGES	6/4/07	TMB



PLAN VIEW
TYPE 5 DOOR - WELDMENT
(UNDERSIDE OF DOOR)
COMPLETE SET = (2) DOORS

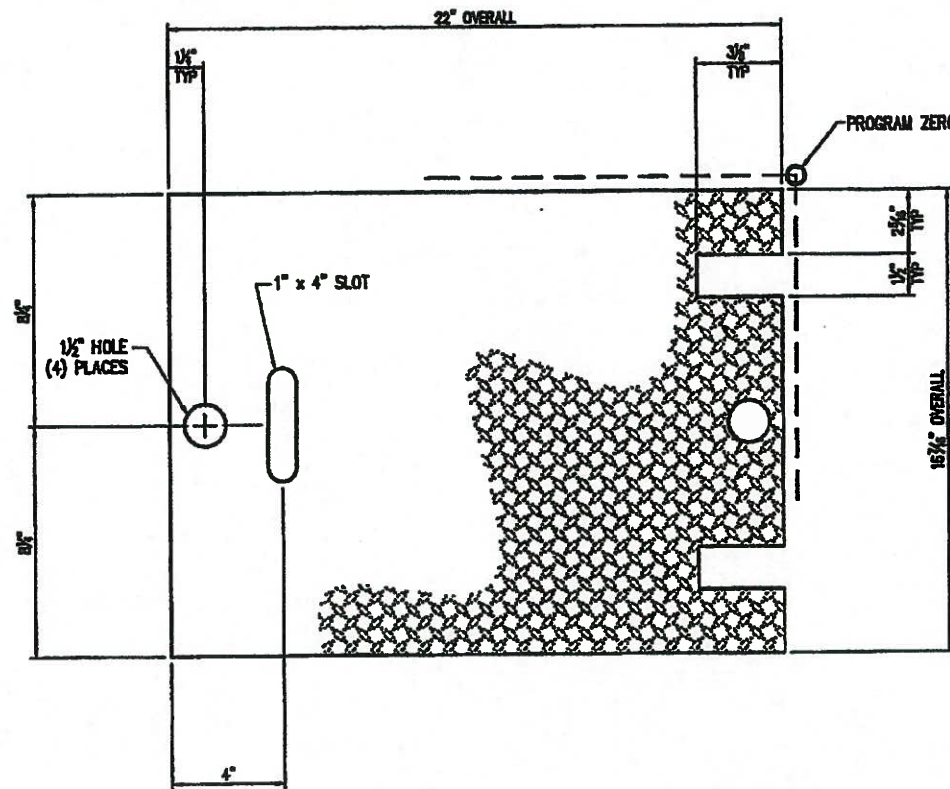
PART LIST (2 DOORS/1 SET)					B.O.M.	
PART	PART NAME	DESCRIPTION	CUT SIZE	QTY.	UV No.	TOTAL
1	COVER PLATE	DIAMOND PLATE, 72" x 120" x 1/2"	(SEE SH1 2)	2	6540085	0.21 lb
2	STIFFENER	FLATBAR, 1/2" x 1 5/8"	21 1/4"	8		38.14 lb
3	GUSSET - LARGE	FLATBAR, 1/2" x 1 5/8"	5"	4		4.01 lb
4	GUSSET - SHORT	FLATBAR, 1/2" x 1 5/8"	4 3/8"	12		12.09 lb
5	BOLT PLATE		(SEE SH1 3)	4		4.00 lb
6	HINGE POCKET	11 GA. FLATBAR		4	6310040	4.00 lb
7	CLIP	FLATBAR, 3/16" x 3/4"	2"	2	6520027	0.16 lb
8	HANDLE	ROD, 1/2"	(SEE SH3)	2		2.00 lb
9	SS HINGE SIDE PLATE	PLATE, 2-1/2" x 1-1/4"		8		8.00 lb
10	SS CLEMS HINGE PIN	PIN, 3/8" x 2 1/4"		4		4.00 lb
11	SS CLEMS HINGE PIN	PIN, 1/2" x 1"		4		4.00 lb
12	SS WASHER	WASHER, 9/16"		8		8.00 lb
13	SS COTTER PIN	COTTER PIN, 2"		8		8.00 lb
14	SS RETAINING BOLT	1/2" x 1-1/2"		4		4.00 lb

ITEM	QUANTITY	PART	DESCRIPTION	QVAL	SIZE	TOTAL WT. LB.
SALES INFORMATION						
J11 TYPE 5 COVER - LAYOUT & WELDMENT						
WSDOT						
BILL OF MATERIAL						
SALES	S.D. #	SCALE	3"=1'-0"	APPROVED	DRG. NO.	REV.
DRAWN	JG	LINE #			CC-0405	H
CHECKED		DATE	6/21/04	SHEET	1 OF 5	

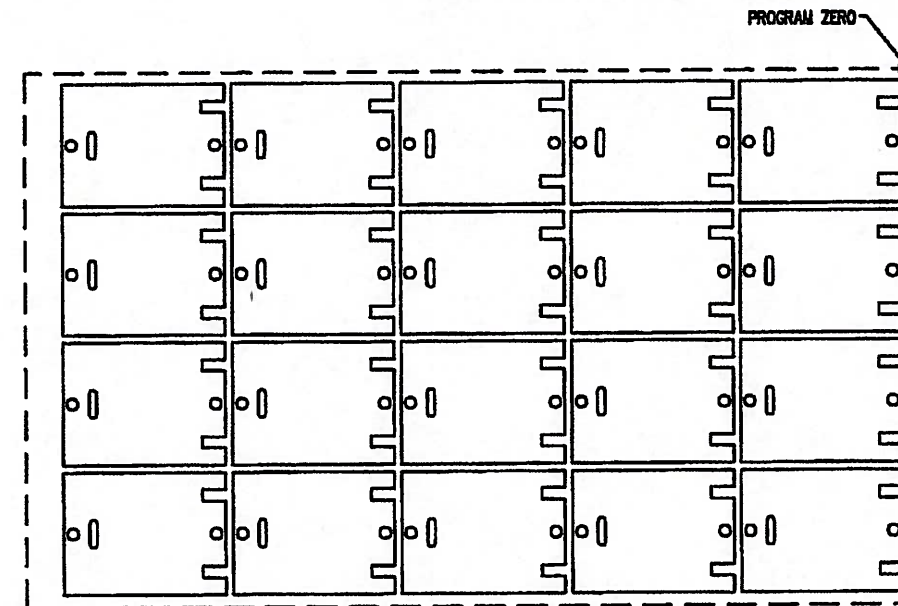


10/26/16

LTR.	REVISION	DATE	BY
A	CHANGED PLATE SIZE TO 72" x 120"	11/4/04	JG
B	ADD SHOP NOTE	2/15/05	JG
D	NO CHANGES	1/22/07	TMB
E	NO CHANGES	2/5/07	TMB
F	NO CHANGES	3/2/07	TMB
G	NO CHANGES	4/17/07	TMB
H	NO CHANGES	8/4/07	TMB



PLAN VIEW
TYPE 5 DOOR - CUT LAYOUT



DETAIL
MATERIAL: 1/8" DIAMOND PLATE
72" x 120" SHEET

SHOP NOTE:
CUT WITH DIAMOND PLATE FACE DOWN.

ADJUST KERF OFFSET WHEN CUTTING TO APPROX. .08 TO MAINTAIN OVERALL DIMENSIONS. CUT 1 TEST DOOR TO ENSURE OFFSET IS CORRECT.

- NOTES:**
1. MATERIAL: 1/8" DIAMOND PLATE (SEE STRUCTURAL NOTE 3, SHEET 1 OF 5)
 2. LAYER CUTA IS FOR SINGLE CUT PROGRAM (CC-0405A)
 3. LAYER CUTB IS FOR MULTIPLE CUT PROGRAM (CC-0405B) - SEE DETAIL

VERIFIED

Washington State Department of Transportation
HQ Traffic Operations Office

BY: ATC DATE: 11/14/16

APPROVED

Washington State
Department of Transportation
HQ Traffic Operations Office

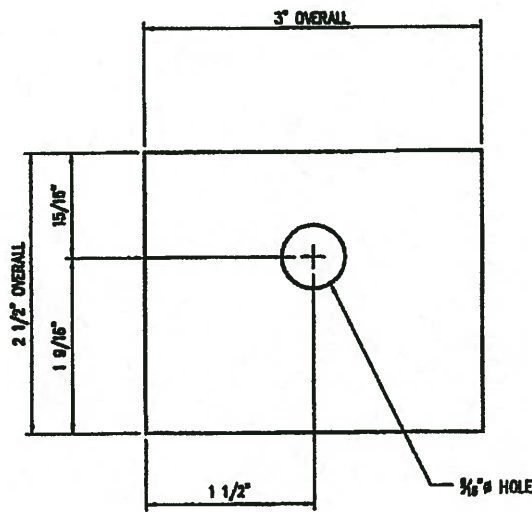
DATE: August 8, 2007 TAT

ITEM	QUANTITY	PART	DESCRIPTION	QVAL	SIZE	TOTAL WT. LBS.
BILL OF MATERIAL						
SALES INFORMATION						
CUSTOMER STANDARD PRODUCT						
SALES S.O. #						
DRAWN JG						
CHECKED DATE 8/21/04						
J11 TYPE 5 COVER - PART CUT						
WSDOT						
SCALE 3"=1'-0"			APPROVED	DWG NO.	REV.	
SHEET 2 OF 5			WEIGHT	CC-0405	H	
<small>THIS DOCUMENT IS THE PROPERTY OF OLDCASTLE PRECAST, INC. IT IS LOANED FOR YOUR USE. IT IS NOT TO BE REPRODUCED OR TRANSMITTED IN ANY FORM OR BY ANY MEANS, ELECTRONIC OR MECHANICAL, INCLUDING PHOTOCOPYING, RECORDING, OR BY ANY INFORMATION STORAGE AND RETRIEVAL SYSTEM. WITHOUT THE WRITTEN PERMISSION OF OLDCASTLE PRECAST, INC. ALL RIGHTS RESERVED.</small>						

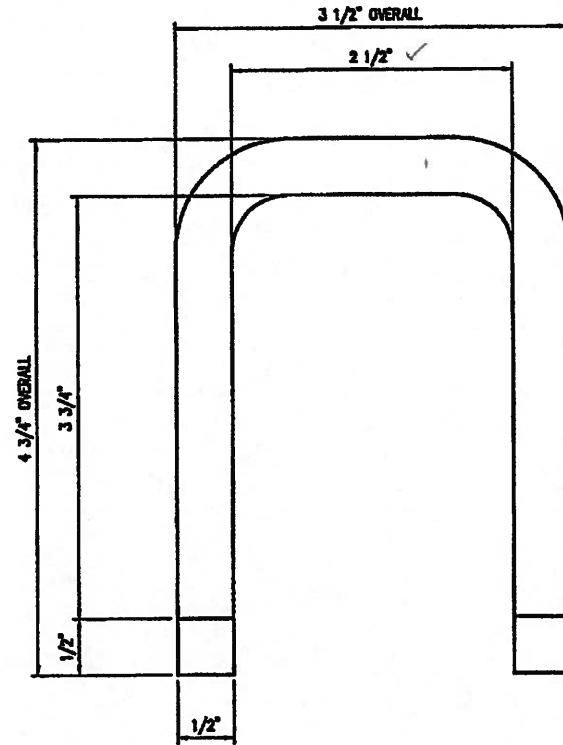


10/26/16

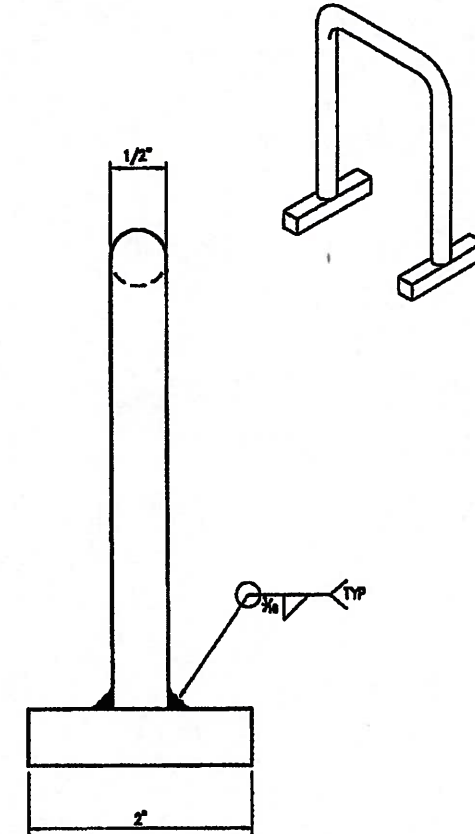
REV.	REVISION	DATE	BY
A	REVISED BOM	10/4/04	JG
B	MODIFIED BOLT PLATE FOR EASE OF WELDING	1/8/05	JG
C	REVISED BOM	4/6/05	JG
D	NO CHANGES	1/22/07	TMB
E	NO CHANGES	2/5/07	TMB
F	CHANGED HANDLE TO 1/2" ROD	3/2/07	TMB
G	NO CHANGES	4/17/07	TMB
H	NO CHANGES	8/4/07	TMB



PLAN VIEW
BOLT PLATE



PLAN VIEW
HANDLE



PART LIST					B.O.M.	
PART	PART NAME	DESCRIPTION	CUT SIZE	QTY.	UV No.	TOTAL
1	BOLT PLATE	FLATBAR, 1/2" x 3"	2 1/2"	4	5520222	4.25 lbs
2	HANDLE	ROD, 1/2"	11"	2	5520222	0.04 lbs
3	HANDLE RETAINER	SQUARE BAR 3/8"	2"	4	5520220	0.31 lbs

VERIFIED

Washington State Department of Transportation
HQ Traffic Operations Office

BY: *[Signature]* DATE: 11/4/16

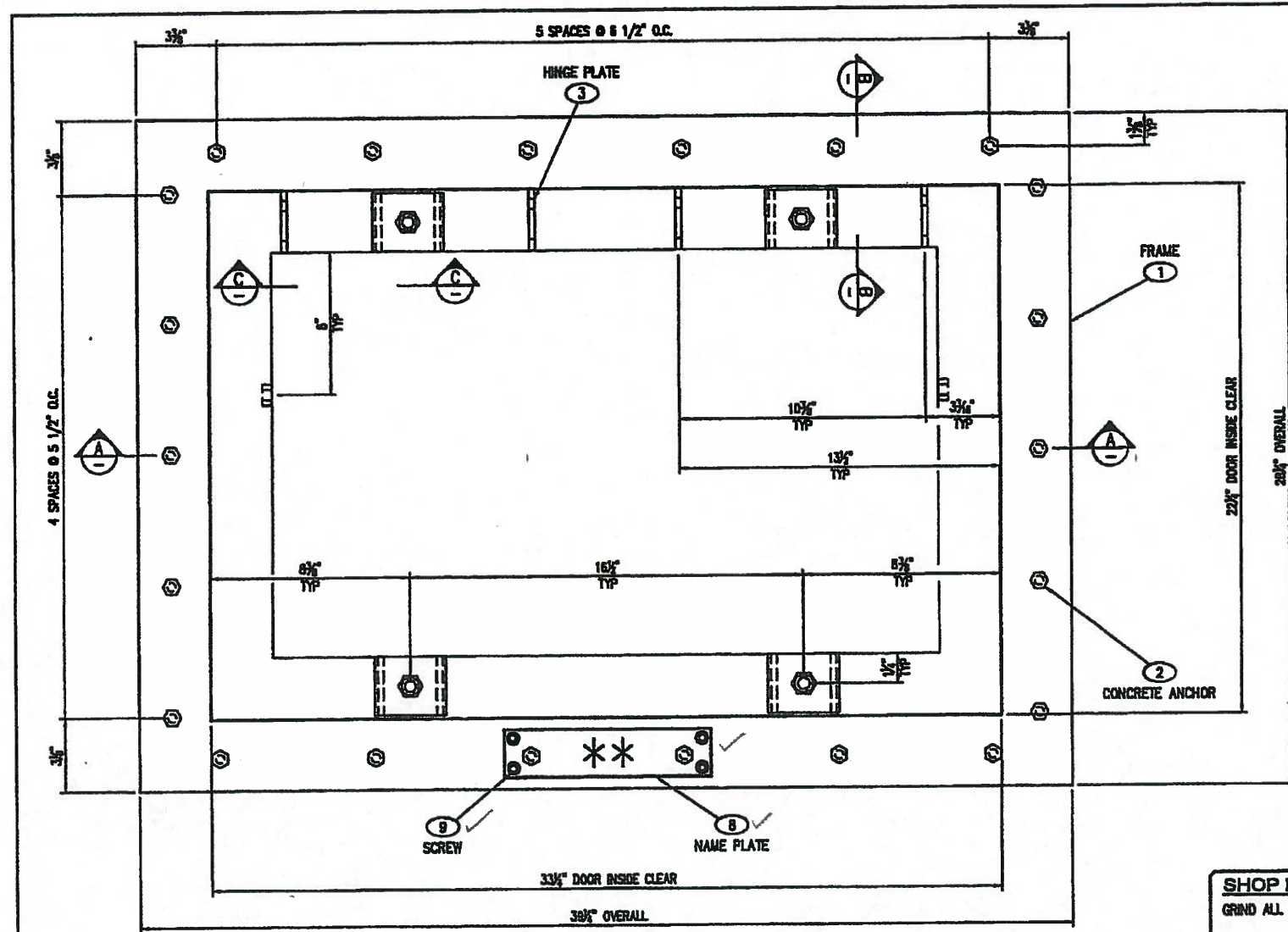
APPROVED

Washington State
Department of Transportation
HQ Traffic Operations Office
DATE: August 8, 2007 TAT

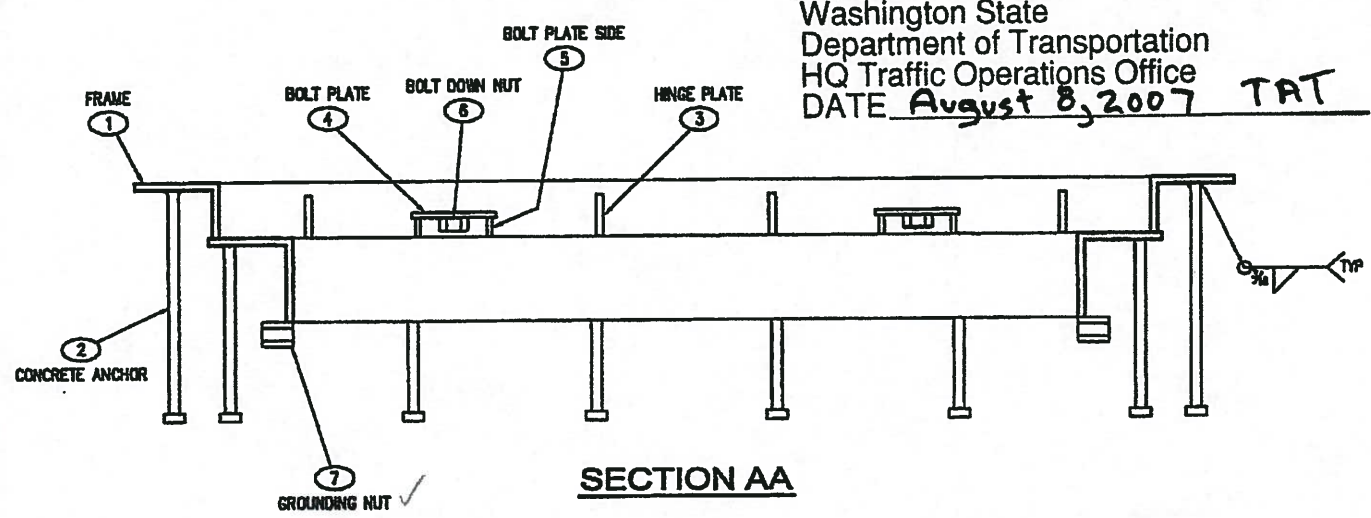
ITEM	QUANTITY	PART	DESCRIPTION	QUAN.	SIZE	TOTAL WT. LBS.
SALES INFORMATION		J11 TYPE 5 COVER - PARTS LAYOUT				
CUSTOMER STANDARD PRODUCT		STANDARD PRODUCT				
SALES	S.O. #	SCALE FULL		APPROVED	DWG NO.	REV.
DRAWN	JG	DATE 6/21/04		SHEET 3 OF 5	CC-0405	H
CHECKED						
<small>THIS DOCUMENT IS THE PROPERTY OF OLDCASTLE PRECAST, INC. IT IS loaned FOR REFERENCE PURPOSES ONLY AND SHALL NOT BE USED IN ANY WAY IN CONNECTION WITH THE BUSINESS OF SAID COMPANY. COPYRIGHT © 2004 Oldcastle Precast, Inc. All Rights Reserved.</small>		<small>Oldcastle Precast, Inc.</small>				



10/26/16



PLAN VIEW
TYPE 5 FRAME - LAYOUT & WELDMENT



SECTION AA

STRUCTURAL NOTES
 1. MATERIAL: ASTM A36 STRUCTURAL STEEL STANDARDS
 2. ASSEMBLY: AWS D1.1 WELDING STANDARDS
 3. SEE STRUCTURAL NOTE 3, SHEET 1 OF 5

NOTES
 1. FRAME TO BE PAINTED AFTER FABRICATION
 2. ALL WELDS TO BE 3/16\"/>

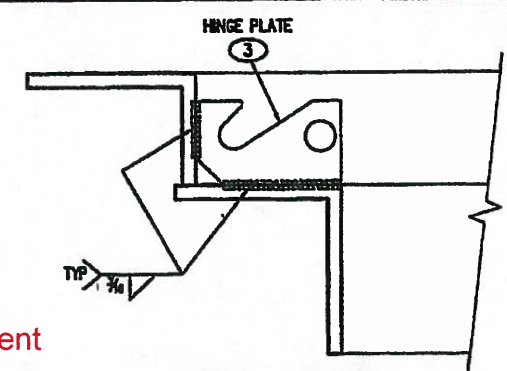
APPROVED AS NOTED
 Washington State
 Department of Transportation
 HQ Traffic Operations Office
 DATE August 8, 2007 TAT

SHOP NOTE:
 GRIND ALL SHARP EDGES
 Bolt 1/2\"/>

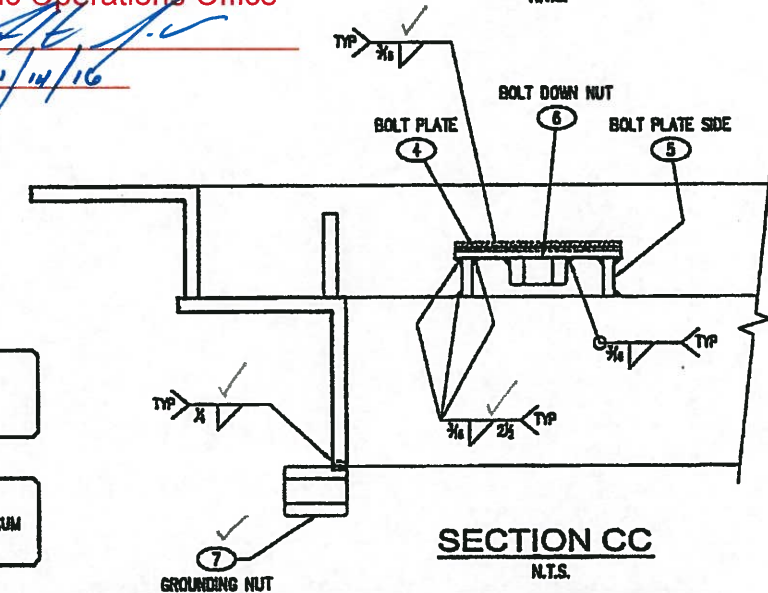
TOLERANCE NOTE:
 OVERALL DIMENSIONS HAVE A MAXIMUM
 ALLOWABLE TOLERANCE OF $\pm 1/16$ \"/>

REV.	REVISION	DATE	BY
A	REVISED BOM	10/4/04	JG
B	REVISED PER CUSTOMER RED MARKS	2/15/05	JG
C	REVISED BOM	4/8/05	JG
D	NO CHANGES	1/22/07	TMB
E	CHANGED GROUNDING NUT TO A 3/8\"/>		
F	NO CHANGE	3/2/07	TMB
G	NO CHANGE	4/17/07	TMB
H	ADDED NAME PLATE	6/4/07	TMB

VERIFIED
 Washington State Department
 of Transportation
 HQ Traffic Operations Office
 BY: [Signature]
 DATE: 11/14/16



SECTION BB
N.T.S.



SECTION CC
N.T.S.

PART LIST					B.O.M.	
PART	PART NAME	DESCRIPTION	CUT SIZE	QTY.	UV No.	TOTAL
1	FRAME	Per	(SEE SH 5)	1		1.00
2	CONCRETE ANCHOR Stud	Bolt 1/2\"/>				
3	HINGE PLATE	FLATBAR, 2 3/4\"/>				
4	BOLT PLATE	FLATBAR, 1/4\"/>				
5	BOLT PLATE SIDE	FLATBAR, 1/4\"/>				
6	BOLT DOWN NUT	HEX NUT, 1/2\"/>				
7	GROUNDING NUT	COUPLER NUT, 3/8\"/>				
8	NAME PLATE	FLATBAR 1/8\"/>				
9	SCREW	1/4\"/>				

ITEM	QUANTITY	PART	DESCRIPTION	QUAN.	SIZE	TOTAL WT. LBS.
SALES INFORMATION						
J11 TYPE 5 FRAME - LAYOUT & WELDMENT						
STANDARD PRODUCT						
WSDOT						
SALES	JG	DATE	6/23/04	SCALE	3\"/>	
DRAWN	JG	DATE	6/23/04	APPROVED	[Signature]	REV. H
CHECKED	JG	DATE	6/23/04	SHEET	4 OF 5	WEIGHT
UTILITY VAULT a division of Oldcastle Precast, Inc. P.O. Box 528, Auburn, MA 01501-0528 Tel: 508-225-1238 Fax: 508-225-1310 Copyright © 2004 Oldcastle Precast, Inc. All Rights Reserved.						



10/26/16

VERIFIED

Washington State Department of Transportation

HQ Traffic Operations Office

BY: [Signature] DATE: 11/14/16

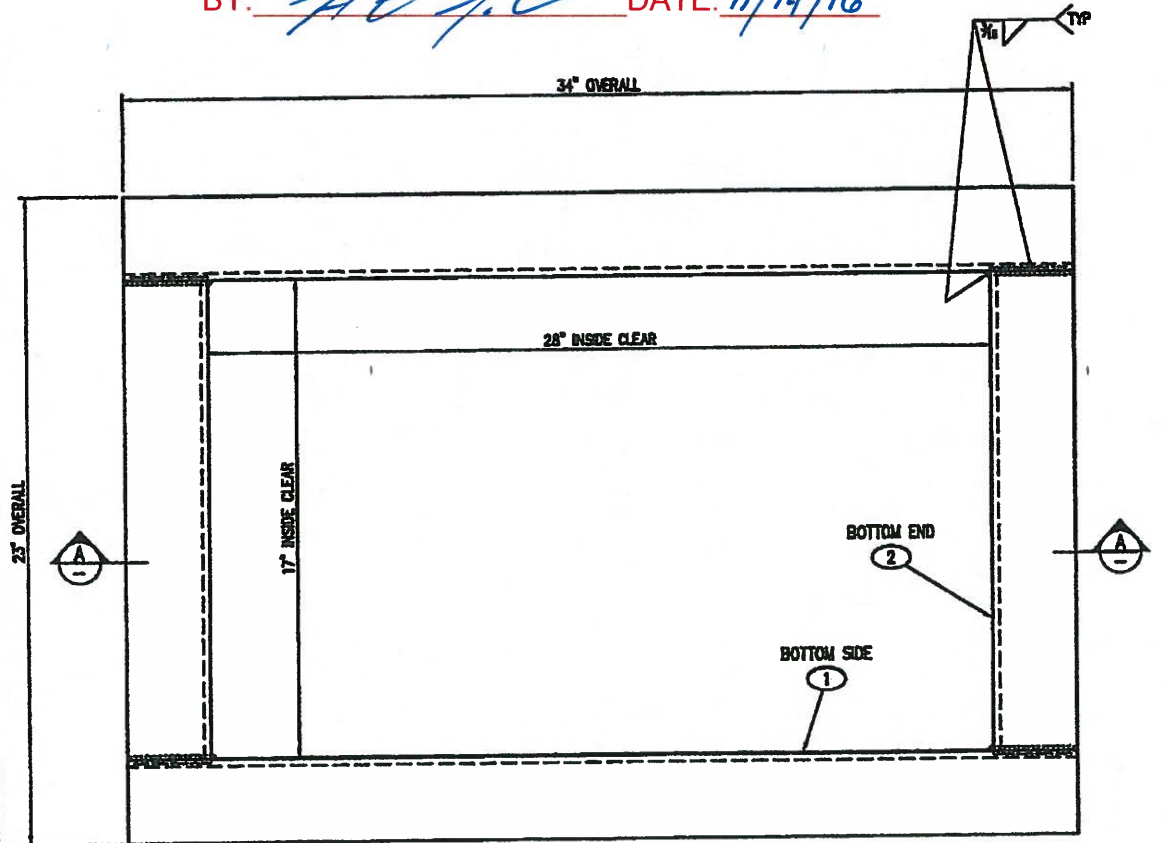
APPROVED

Washington State Department of Transportation

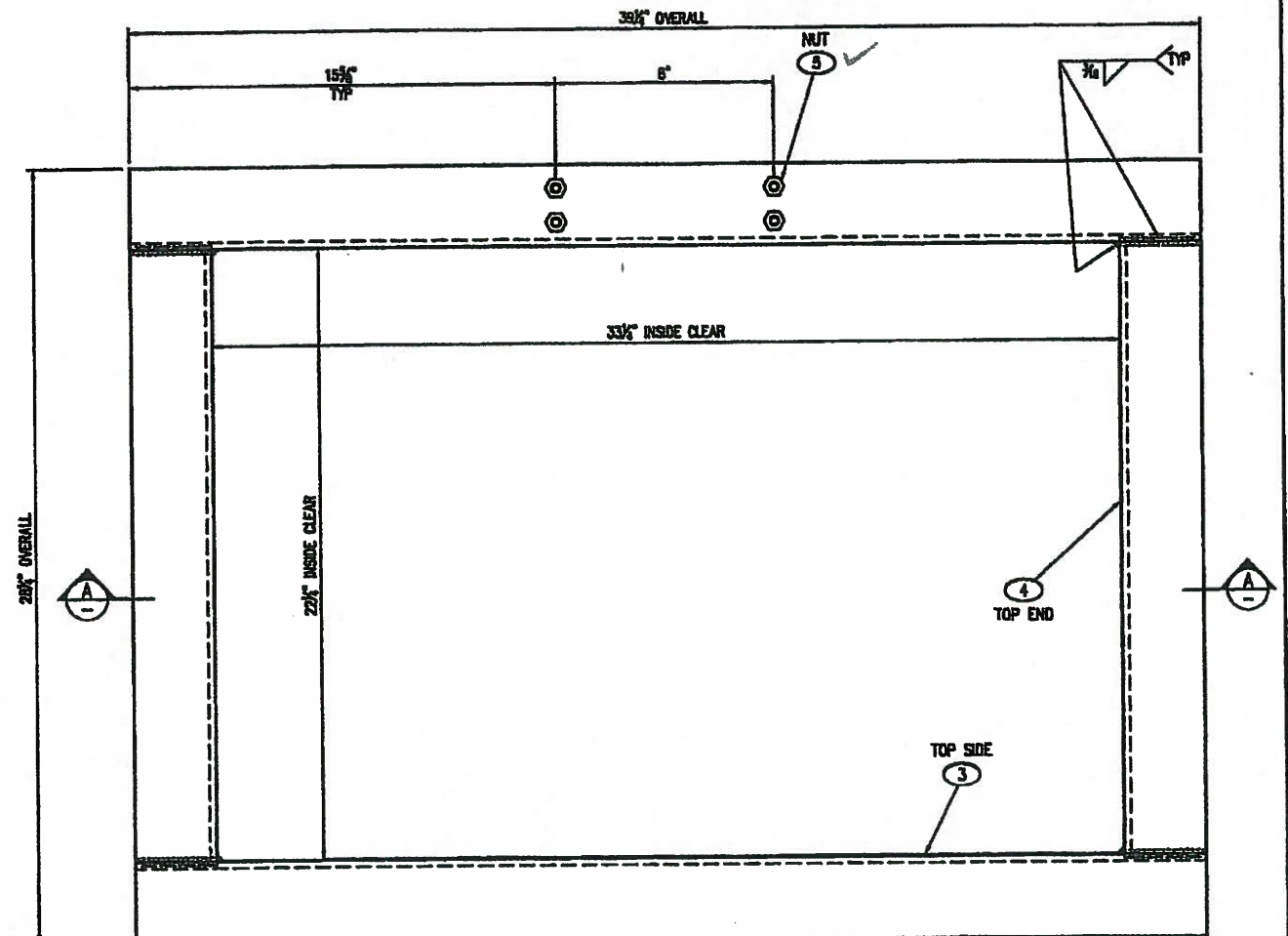
HQ Traffic Operations Office

DATE: August 8, 2007 TAT

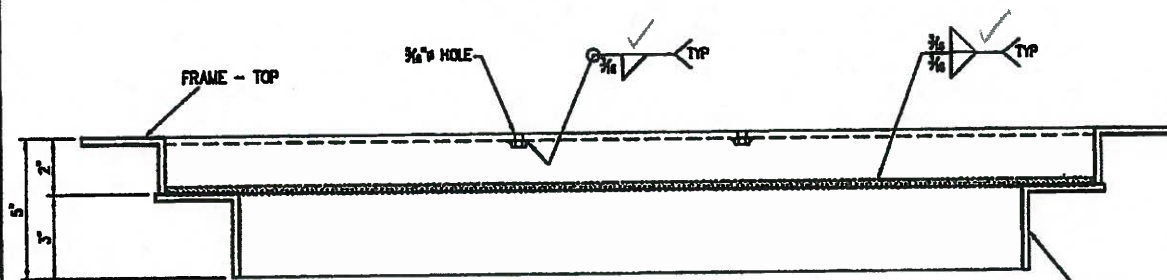
REV.	REVISION	DATE	BY
A	DECREASED WIDTH BY 2 1/4"	6/28/04	JG
B	REVISED PER CUSTOMER RED MARKS	2/15/05	JG
C	REVISED BOM	4/6/05	JG
D	NO CHANGES	1/22/07	TMB
E	NO CHANGES	2/5/07	TMB
F	NO CHANGES	3/2/07	TMB
G	NO CHANGES	4/17/07	TMB
H	ADDED NAME PLATE	8/4/07	TMB



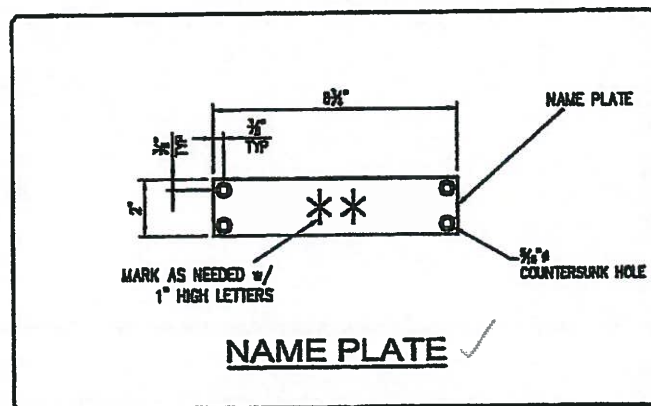
PLAN VIEW
TYPE 5 FRAME - BOTTOM



PLAN VIEW
TYPE 5 FRAME - TOP



SECTION AA



NAME PLATE

SHOP NOTE:
GRIND ALL SHARP EDGES

TOLERANCE NOTE:
OVERALL DIMENSIONS HAVE A MAXIMUM ALLOWABLE TOLERANCE OF $\pm 1/16$ "

STRUCTURAL NOTES

- MATERIAL: ASTM A36 STRUCTURAL STEEL STANDARDS
- ASSEMBLY: AWS D1.1 WELDING STANDARDS
- SEE STRUCTURAL NOTE 3, SHEET 1 OF 5

PART LIST						B.O.M.	
PART	PART NAME	DESCRIPTION	CUT SIZE	QTY.	UV No.	TOTAL	
1	FRAME - SIDE BOTTOM	ANGLE, 3" x 3" x 1/4"	34"	2		27.76 Lbs	
2	FRAME - END BOTTOM	ANGLE, 3" x 3" x 1/4"	17"	2		13.88 Lbs	
3	FRAME - SIDE TOP	ANGLE, 2" x 3" x 1/4"	39 1/4"	2		28.82 Lbs	
4	FRAME - END TOP	ANGLE, 2" x 3" x 1/4"	22 1/4"	2		16.20 Lbs	
5	NUT	1/4"-20 HEX NUT, SS		4			
8	NAME PLATE	FLATBAR 1/8" x 2", SS	8 3/4"	1			

* SPECIAL ORDER: FLATBAR 1/8" x 2", STAINLESS

ITEM	QUANTITY	DESCRIPTION	QTY.	SIZE	TOTAL WT. (LBS)
SALES INFORMATION					
CUSTOMER: STANDARD PRODUCT					
SALES: S.O. #					
DRAWN: JG					
CHECKED: DATE: 6/23/04					
SCALE: 3"=1'-0"					
DATE: 6/23/04					
SHEET 5 OF 5					
APPROVED: [Signature]					
DWC NO. CC-0405					
REV. H					
UTILITY VAULT™ a division of Oldcastle Precast, Inc.					

