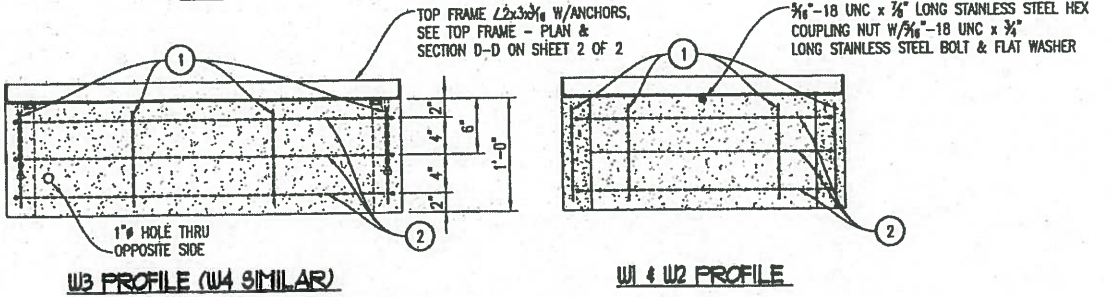
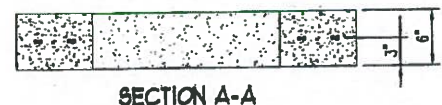
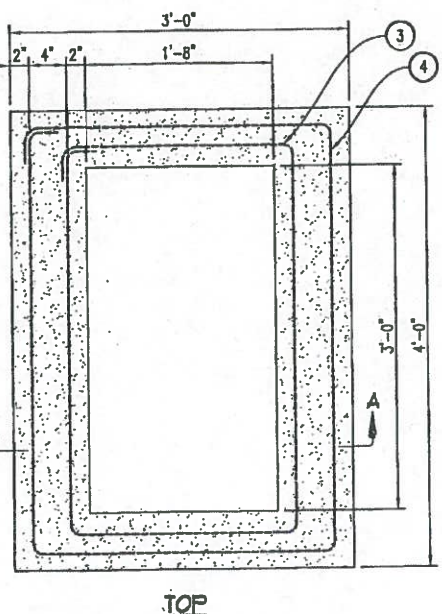


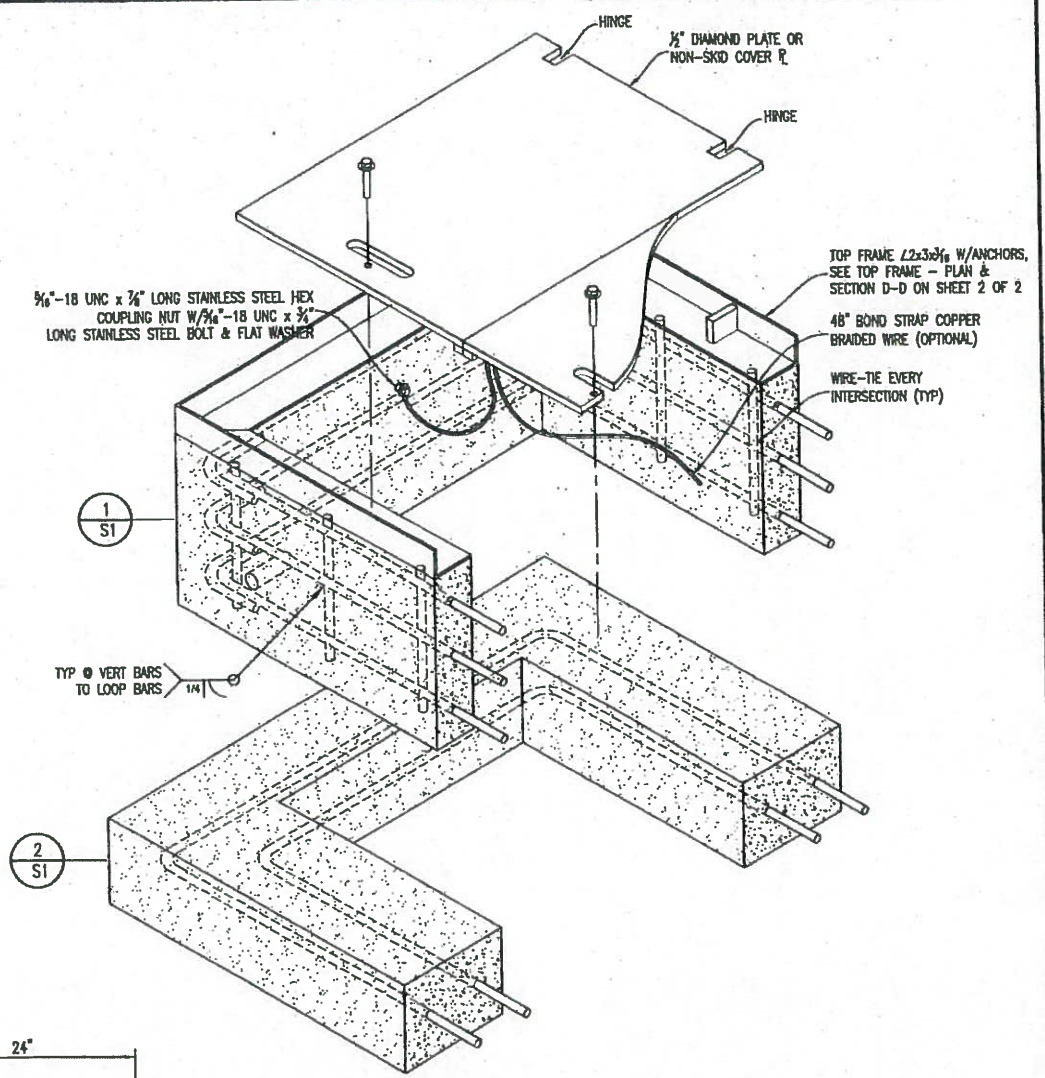
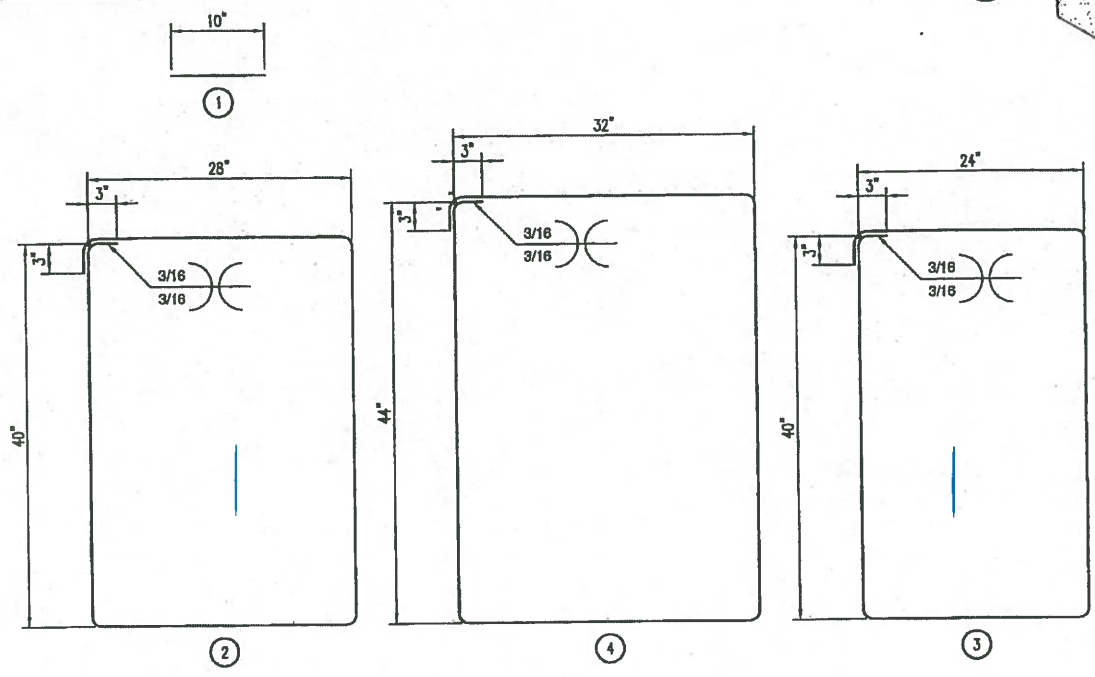
APPROVED AS NOTED
 Washington State Department of Transportation
 HQ Traffic Operations Office
 BY: [Signature] DATE: 10/3/2016



1 UPPER BOX CASING
 1" = 1'-0"



2 LOWER BOX CASING
 1" = 1'-0"



3 ISOMETRIC ASSEMBLY
 1-1/2" = 1'-0"

DESIGN PARAMETERS:
 - AASHTO STANDARD SPECIFICATIONS FOR HIGHWAY BRIDGES
 - ACI-318-11 STRUCTURAL CONCRETE
 - ASTM C857 MINIMUM STRUCTURAL DESIGN LOADING FOR UNDERGROUND PRECAST CONCRETE UTILITY STRUCTURES

LOADS:
 150 pcf CONCRETE DENSITY
 120 pcf SOIL DENSITY
 AASHTO H-20-S16 WHEEL LOAD W/30% IMPACT
 AASHTO LIVE LOAD SURCHARGE (2' SOIL)
 MINIMUM LOAD RATING 22,500 LBS
 EFFECTIVE SOIL PRESSURE = 45 pcf
 NO WATERTABLE

MATERIALS:
 CONCRETE - 28 DAY COMPRESSION STRENGTH $F'_c = 6,000$ psi
 REBAR - ASTM A706 GRADE 60 (WELDABLE)
 1/2" DIAMOND PLATE COVER - ASTM A36 $F_y = 36$ ks OR NON-SKID

SOIL COVER:
 NO SOIL COVER - TOP OF COVER @ GRADE

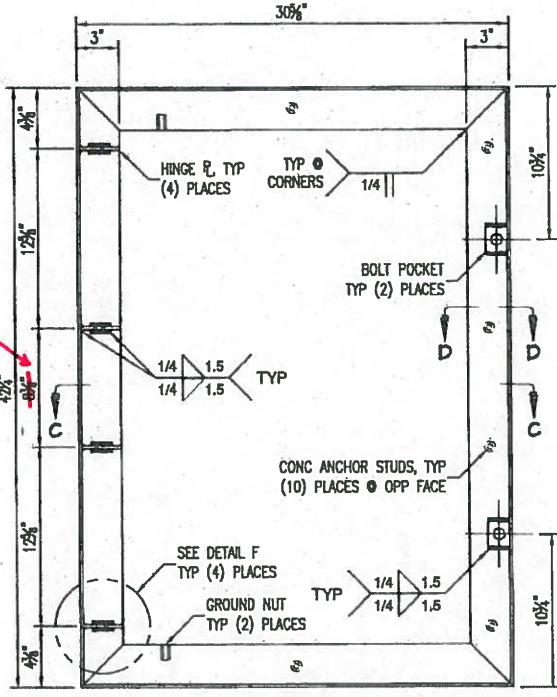
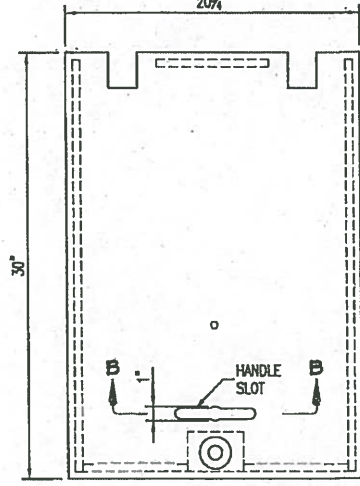
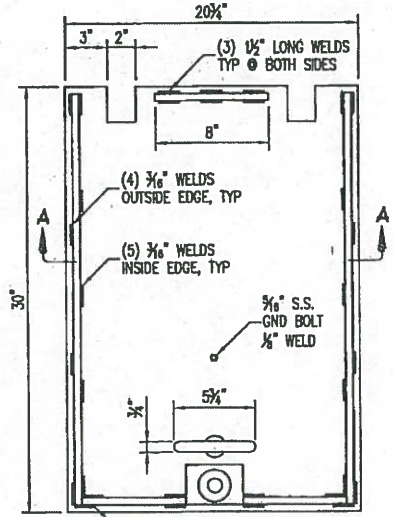
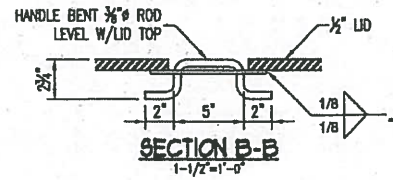
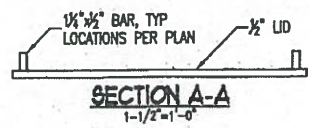
BILL OF MATERIAL				
PART	DESCRIPTION	QTY	SIZE	WT. LBS
1	#3 ASTM A706 GRADE 60	12	10" STRAIGHT	-
2	#3 ASTM A706 GRADE 60	3	SEE DETAIL	-
3	#4 ASTM A706 GRADE 60	1	SEE DETAIL	-
4	#4 ASTM A706 GRADE 60	1	SEE DETAIL	-



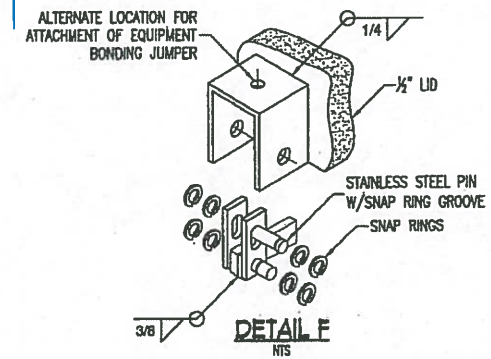
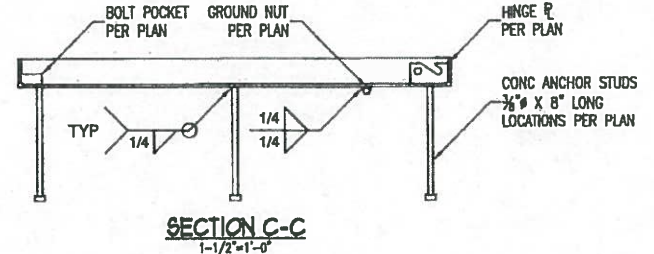
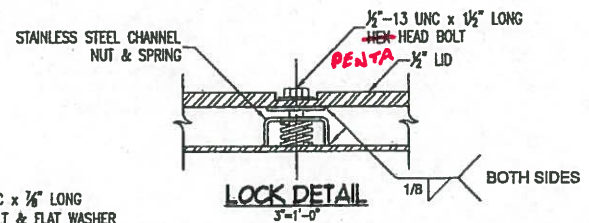
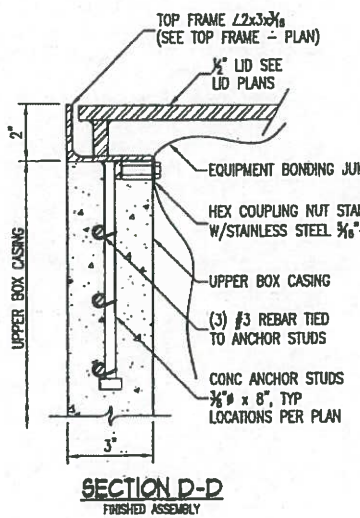
TYPE 8 J-BOX

SCALE:	SEE DETAILS	DWG BY:	KWT
SHEET:	1 OF 2	CHK BY:	TCL/JBR
JOB NO:	14003	DATE:	01.15.14

FOGTITE INCORPORATED



APPROVED AS NOTED
 Washington State Department of Transportation
 HQ Traffic Operations Office
 BY: *[Signature]* DATE: 10/3/2016



TYPE 8 J-BOX			
SCALE:	SEE DETAILS	DWG BY:	KWT
SHEET:	2 OF 2	CHK BY:	TCL/JBR
JOB NO:	14003	DATE:	01.15.14
FOGTITE INCORPORATED			