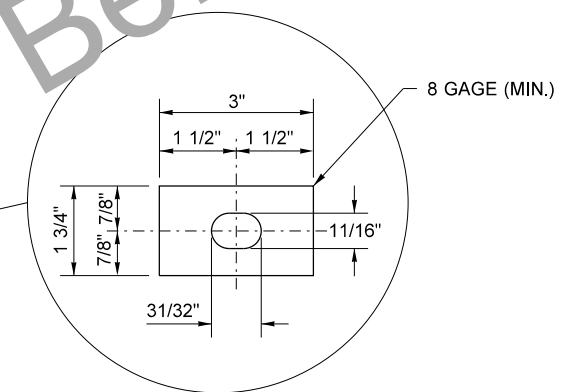
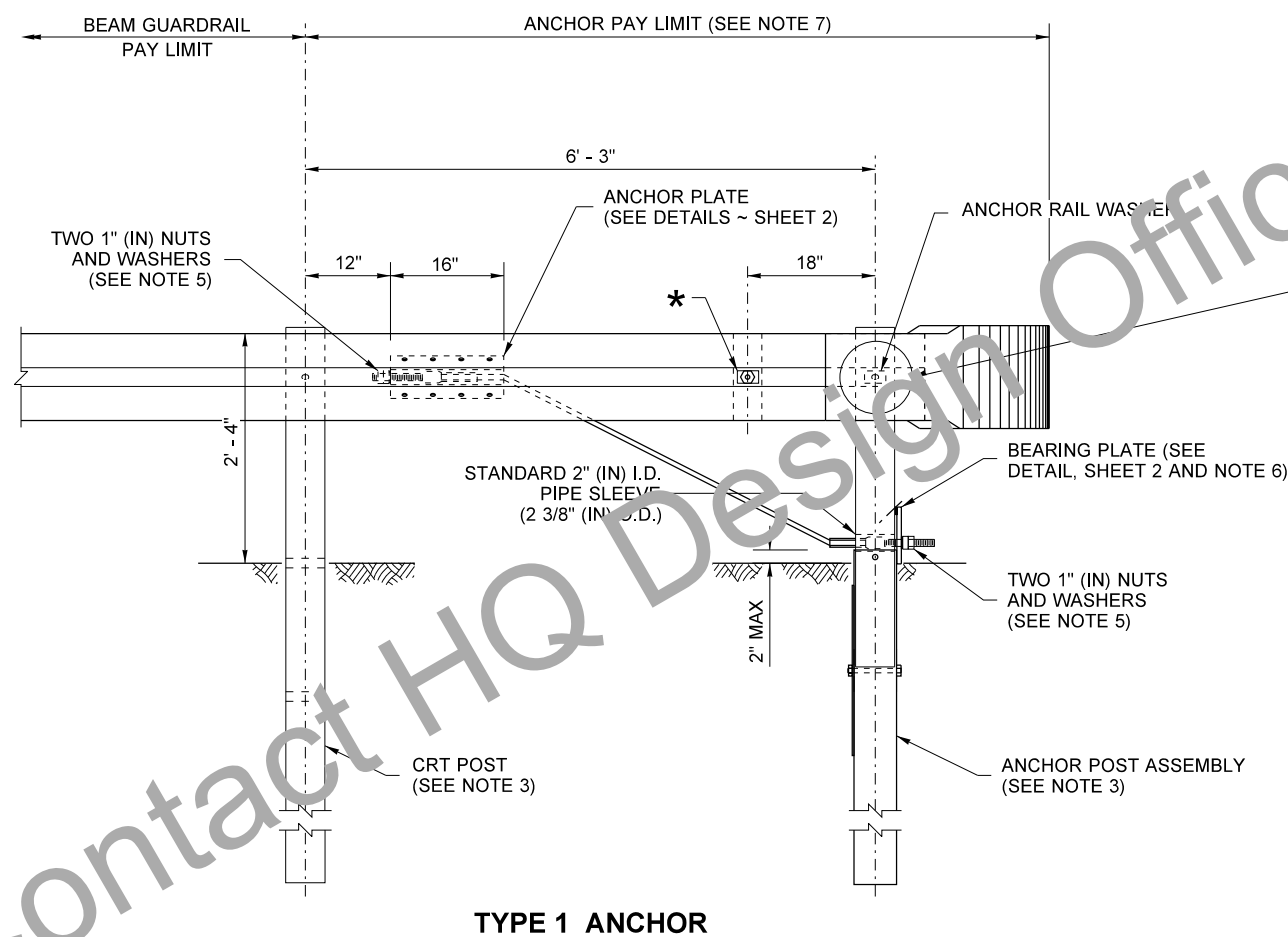


NOTES

1. ANCHOR PLATE MAY BE CONSTRUCTED FROM 1/4" (IN) PLATES WELDED TO EQUAL STRENGTH AND DIMENSIONS AS SHOWN.
2. FOR END SECTION DETAILS SEE **STANDARD PLAN C-7**.
3. FOR POST DETAILS, SEE **STANDARD PLAN C-1b**.
4. EIGHT 5/8" (IN) X 1/2" (IN) MACHINE BOLTS WITH HEX NUT AND WASHER. PLACE WASHER ON FACE SIDE OF RAIL.
5. OUTSIDE NUT SHALL BE TORQUED AGAINST INSIDE NUT A MINIMUM OF 100 FT-LBS.
6. TOENAIL BEARING PLATE WITH 10D NAIL AT CORNERS TO PREVENT TURNING.
7. ANCHOR PAY LIMIT DOES NOT APPLY WHEN ANCHOR IS INCLUDED IN A BEAM GUARDRAIL TERMINAL.



ANCHOR RAIL WASHER

* 5/8" (IN) x 2" (IN) BUTTON HEAD BOLT OR 5/8" (IN) x 1 1/2" (IN) HEX HEAD BOLT AND HEX NUT WITH ANCHOR RAIL WASHERS UNDER BOLT HEAD AND NUT

TYPE 1 ANCHOR

BEAM GUARDRAIL TYPE 1 ANCHOR

FILE NAME		S:\Design R P & S\4-Standards\2-Plan Sheet Library\02-PSL Work in Progress\C series conversion\TB-c6\TB-c6.dgn		REGION NO.		STATE		FED.AID PROJ.NO.		Plot 1	
TIME		1:14:58 PM		10		WASH				PLAN REF NO	
DATE		8/2/2018								TB-C6	
PLOTTED BY		liddelf								SHEET	
DESIGNED BY										1	
ENTERED BY										OF	
CHECKED BY										2	
PROJ. ENGR.										SHEETS	
REGIONAL ADM.		REVISION		DATE		BY		DATE			
								P.E. STAMP BOX			



