



WSDOT Community Planning Portal

May 2017

What is the Community Planning Portal?

WSDOT's Community Planning Portal is an online forum for state, regional, and local transportation planners to share transportation and land use data. The intent of the portal is to foster collaborative planning to achieve common goals, including the provision of a reliable, responsible, and sustainable transportation system for the public.

WSDOT has compiled the state transportation data we think will help local and regional planners, decision-makers, and citizens better understand the story of the state transportation system in their jurisdictions. We hope sharing this data will lead to a closer partnership so that, together, we can identify opportunities to operate our system more efficiently, manage demand, and, where appropriate, fund strategic capacity improvements.

Why Did WSDOT Create the Community Planning Portal?

Many local governments are in the process of updating their comprehensive plans and regulations, as required periodically by the Growth Management Act. WSDOT is making it easier for local and regional planners to access the information they need from us for these updates, as well as for other planning efforts that may affect the state transportation system.

How Does the Community Planning Portal Work?

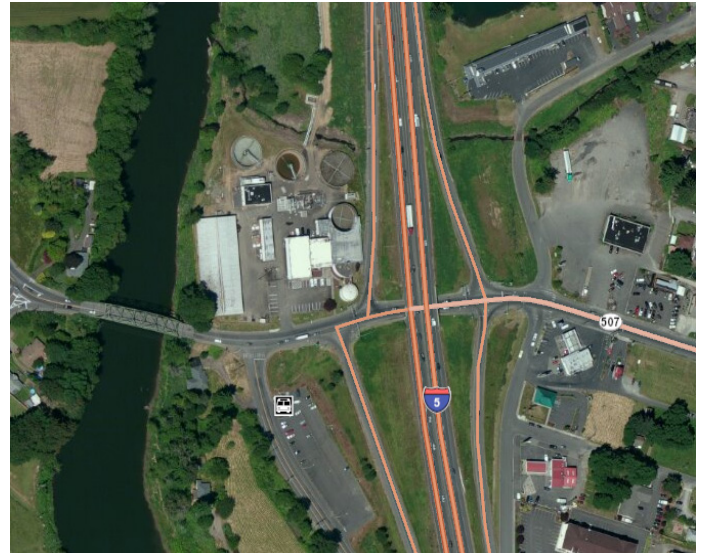
The Community Planning Portal is available on ArcGIS Online through the WSDOT Online Map Center, a collaborative information site developed by WSDOT.

The Community Planning Portal allows local and regional governments to access interactive online maps and fact sheets customized for their jurisdictions. Agencies can print maps or download data layers from the portal. They can also upload their own data or data from other state and federal agencies that have published content to ArcGIS Online. More easily sharing data presents an exciting opportunity for planners across Washington to better integrate local, regional, and state transportation and land use planning.

Where is the information to get started or to learn more about the Community Planning Portal?

You can access the Community Planning Portal through the WSDOT Online Map Center by typing the following in your web browser <http://wsdot.maps.arcgis.com>. Select the WSDOT Community Planning Portal from the featured content in the middle of the page by clicking the picture.

For background information and help, including how-to videos and scripts, and the WSDOT Community Planning Portal - Quick Start Guide, go to the WSDOT Community Planning Portal website at <http://www.wsdot>.



The WSDOT Community Planning Portal helps local, regional, and state planners collaborate more effectively to provide an integrated transportation system.

wa.gov/planning/community/CommunityPlanningPortal.htm

We hope local and regional planners use the Community Planning Portal to access information about WSDOT, share their own data, and engage WSDOT region planners in discussions of how we can work together to support economic vitality, preserve our transportation system, improve safety and mobility, protect the environment, and better steward our limited financial resources.

For more information, please contact your WSDOT Region Planning Office:

[WSDOT Region Planning Offices, GMA Contacts](#)

Or for general questions and suggestions, contact:

**Kyle Miller, Transportation Planner;
WSDOT Planning Innovations Office
kyle.miller@wsdot.wa.gov,
360.705.7946**

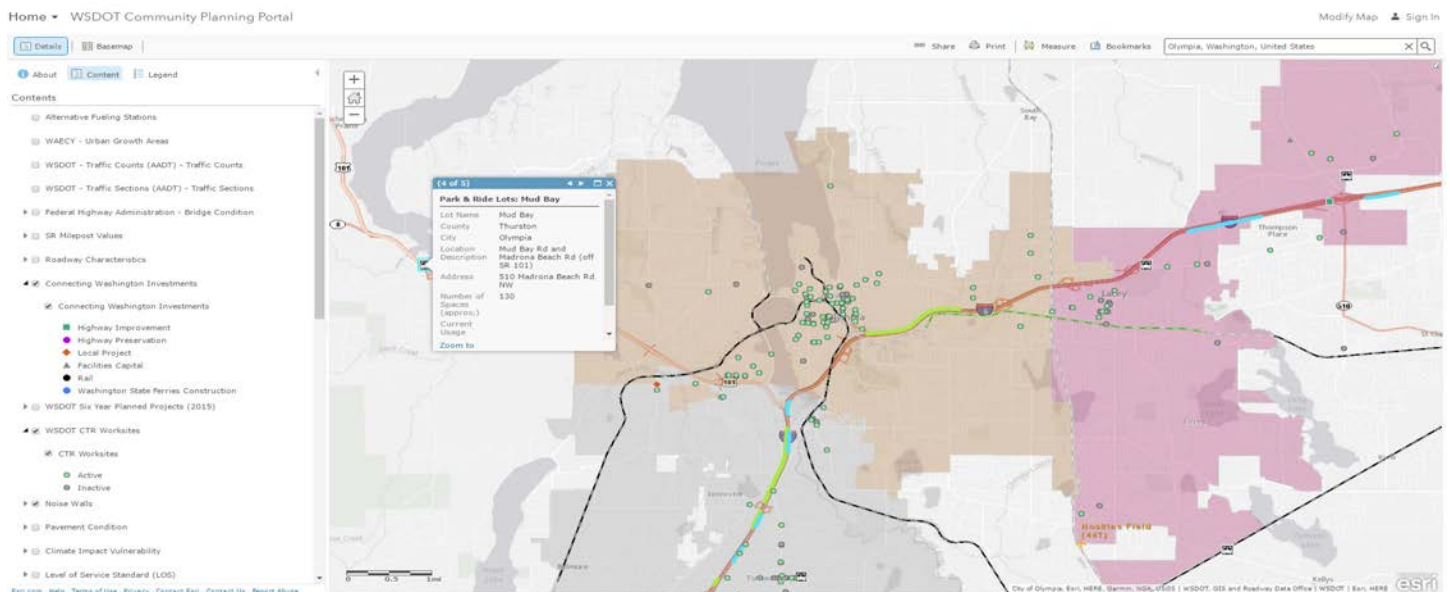


What Kind of Information Does the Community Planning Portal Include?

WSDOT has developed a set of data about the state transportation system to assist local governments in completing the transportation element inventory required by the Growth Management Act. The Portal now includes more than thirty descriptive layers about the state transportation system such as airport locations, state highway designations and classifications, roadway characteristics, and traffic counts. The Portal's Planning Fact Sheet layers will take you to a web page that generates data specifically for any city, county, or tribe jurisdiction.

Current Data Within the Community Planning Portal

- Airports
- Alternative Fuel Stations
- Annual Traffic Report
- City Planning Fact Sheets
- Climate Impact Vulnerability
- Connecting Washington Investments
- County Planning Fact Sheets
- CTR Worksites
- Federal Highway Administration - Bridge Condition
- Ferry Routes
- Fish Passage Barriers (Uncorrected)
- Freight and Goods Transportation System (FGTS)
- Functional Class
- Highways of Statewide Significance (HSS)
- Level of Service Standard
- Metropolitan Planning Areas
- Mileposts
- Mobility Needs
- National Highway System Routes (NHS)
- Noise Walls
- Park and Ride Lots
- Pavement Condition
- Railroads
- Regional Transportation Planning Organizations (RTPO)
- Roadway Characteristics
 - * Access Control
 - * Legal Speed Limits
 - * Number of Lanes
 - * Roadway Width
 - * Special Use Lanes
 - * Surface Type
- Scenic Byways
- State Routes
- Traffic Counts (AADT)
- Traffic Sections (AADT)
- Tribal Planning Fact Sheets
- Tribal Reservation and Trust Lands
- WAECY - Urban Growth Areas
- WSDOT Pollinator Habitat Rankings
- WSDOT Regions
- WSDOT Six Year Planned Projects
- WSDOT Stormwater Discharge Points



Title VI Notice to Public: It is the Washington State Department of Transportation's (WSDOT) policy to assure that no person shall, on the grounds of race, color, national origin or sex, as provided by Title VI of the Civil Rights Act of 1964, be excluded from participation in, be denied the benefits of, or be otherwise discriminated against under any of its federally funded pro-grams and activities. Any person who believes his/her Title VI protection has been violated, may file a complaint with WSDOT's Office of Equal Opportunity (OEO). For addi-tional information regarding Title VI complaint procedures and/or information regarding our non-discrimination obligations, please contact OEO's Title VI Coordinator at (360) 705-7082.

Americans with Disabilities Act (ADA) Information: Accommodation requests for people with disabilities can be made by contacting the WSDOT Diversity/ADA Affairs team at wsdotada@wsdot.wa.gov or by calling toll-free, 855-362-4ADA (4232). Persons who are deaf or hard of hearing may make a request by calling the Washington State Relay at 711.