

# Washington State Ferries 2040 Long Range Plan

## Technical Advisory Group

Ray Deardorf, WSF Senior Planning Manager  
Carmen Bendixen, WSF Senior Transportation Planner

July 27, 2017

# Agenda

- Welcome and introductions
- Background and legislative direction
- Long Range Plan overview
- Discussion
- Stakeholder engagement
- Timeline
- Review Technical Advisory Group roles
- Next steps

# Meeting Objectives

1. Kick-off the Washington State Ferries Long Range Technical Advisory Group
2. Clarify Long Range Plan focus and scope
3. Agreement on Technical Advisory Group roles
4. Gather input on local planning efforts and data

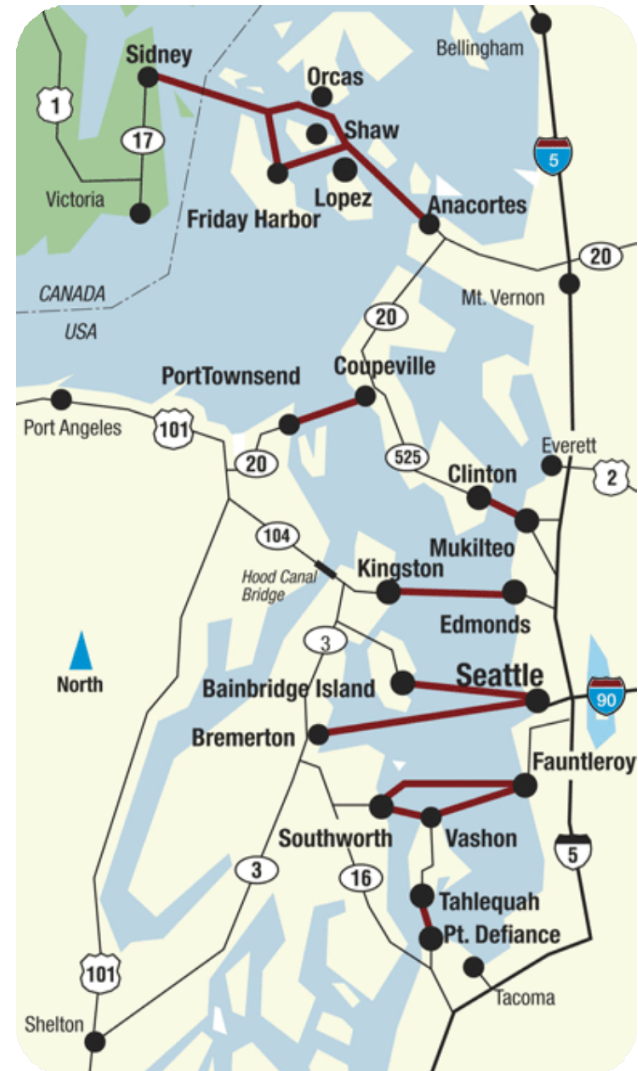
# Washington State Ferries Overview

## The largest ferry system in the U.S.

- Third largest transit system in Washington State

## One of the largest auto ferry systems in the world

- 23 auto-passenger ferries
- 10 routes serving 20 terminals
- 24.2 million annual riders
- 10.5 million annual vehicles
- 450 sailings per day
- 1,800 employees



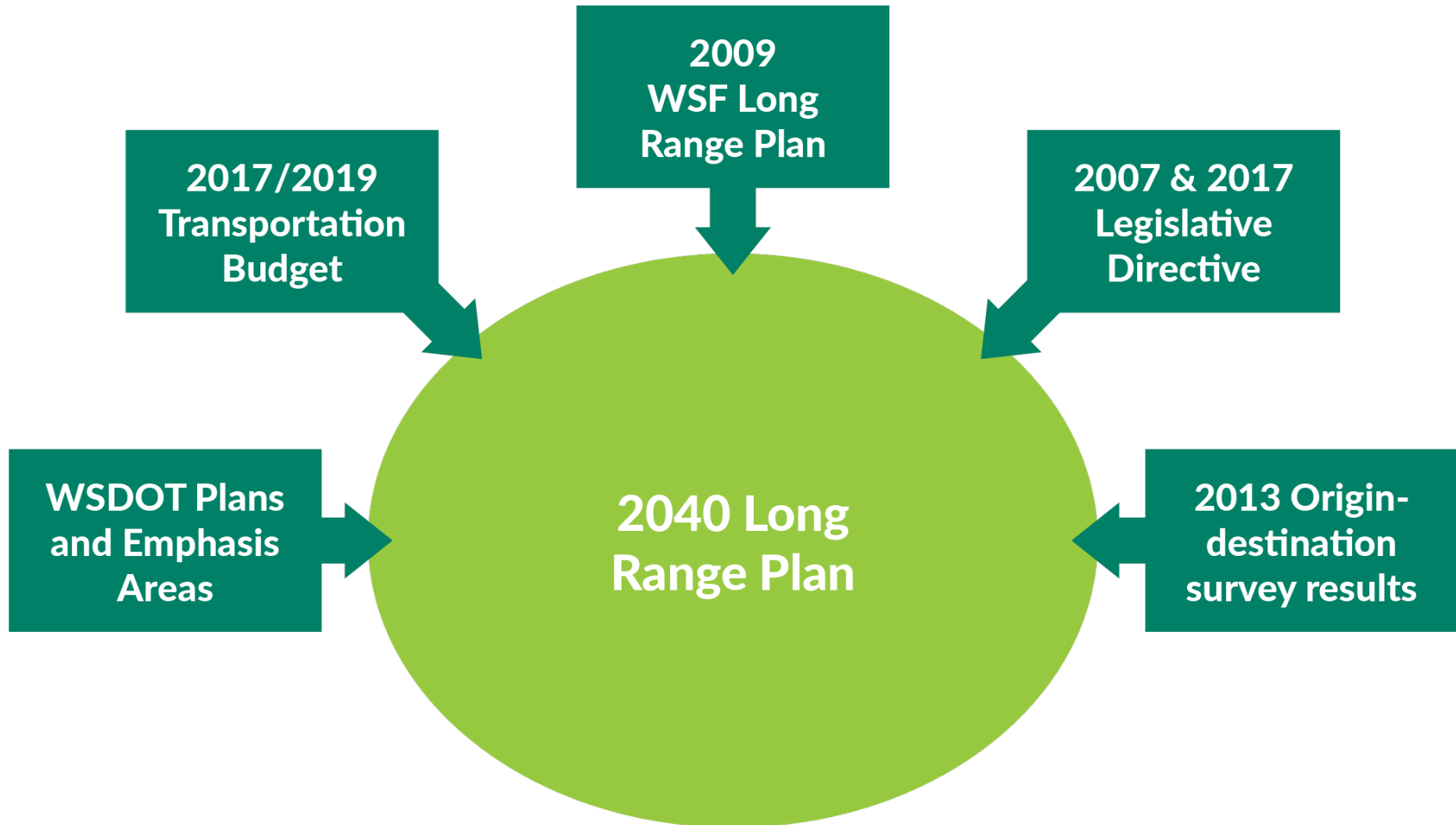
# Long Range Plan Background

WSF Plan Date	Horizon	Emphasis
1999	2015	<ul style="list-style-type: none"><li>Expanding the system</li></ul>
2009	2030	<ul style="list-style-type: none"><li>Maximize use of existing resources</li></ul>
2019	2040	<ul style="list-style-type: none"><li>Scoping process underway</li></ul>

## 2040 plan will focus on:

- Improving connections and planning for future cross sound transportation
- Developing practical solutions for future ferry service
- Managing vehicle demand before adding capacity

# What is required in the 2040 plan?



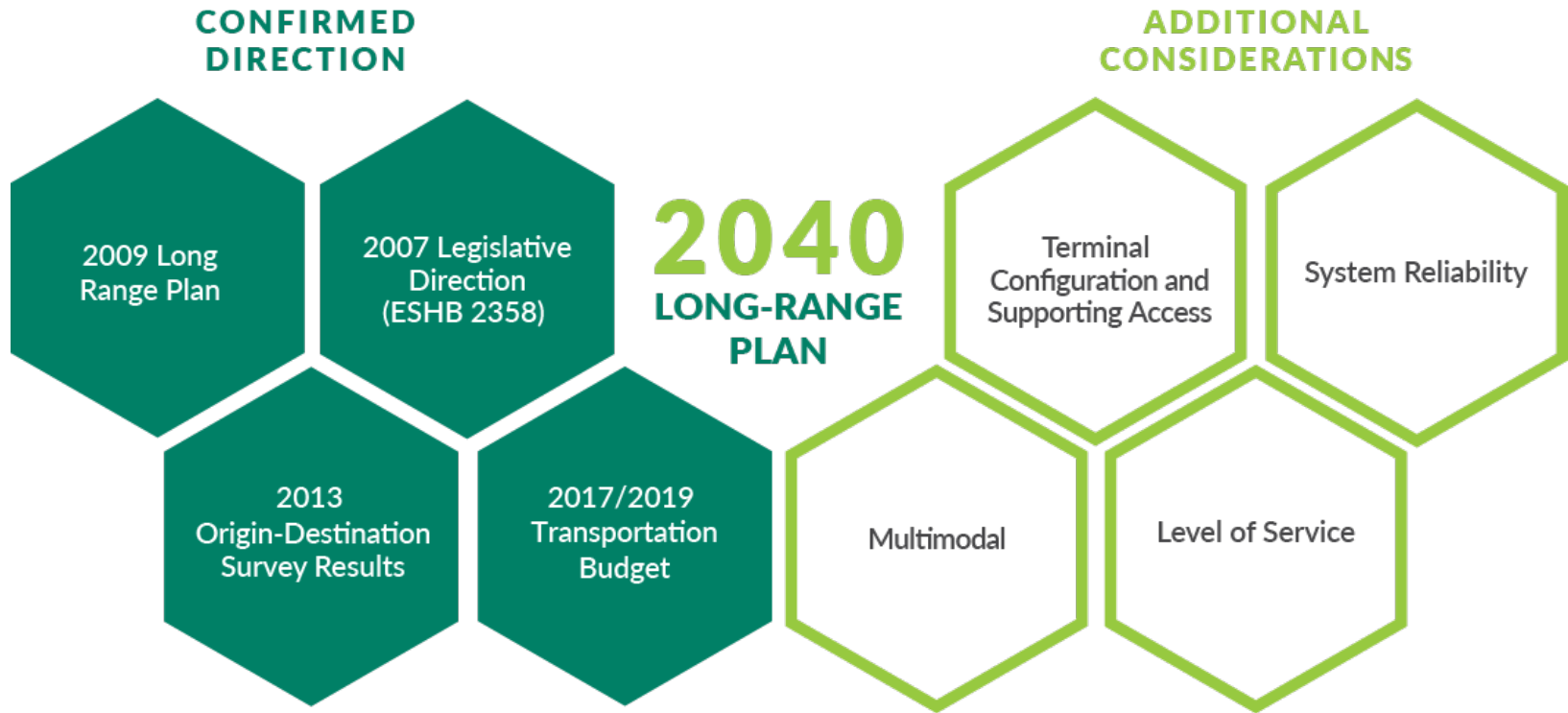
# Progress Report

**2009 Long Range Plan presented a vision for the future of the ferry system. What we have accomplished:**

- Studied and implemented vehicle reservation systems
- Improved customer web experience for easier trip planning
- Building Mukilteo and Colman Dock ferry terminals
- Implemented pricing strategies to maximize use of vehicles space
- Built new vessels



# Potential Topics





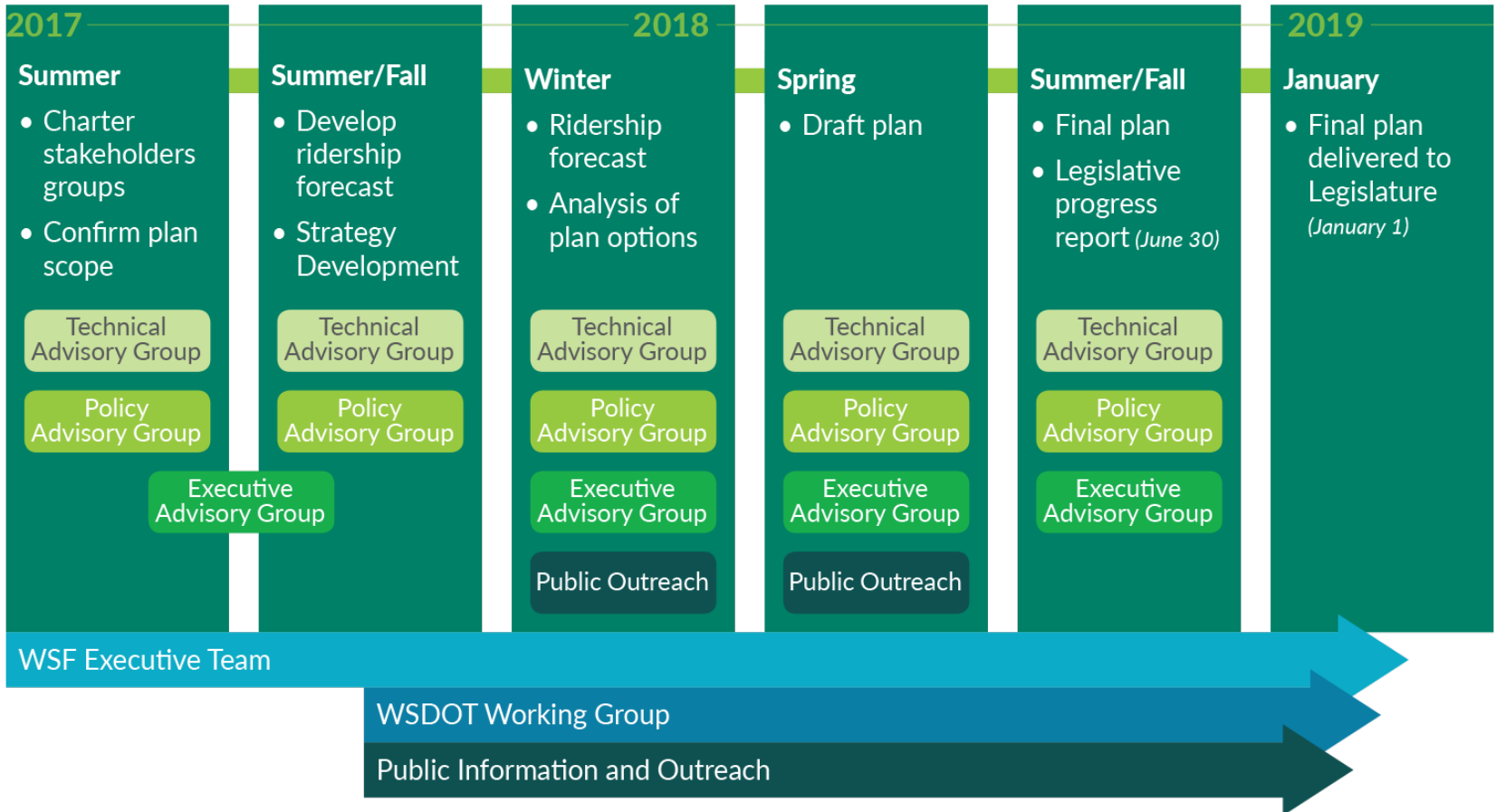
# Discussion Questions

- Do you have any questions or comments on the overview information presented today?
- What is the status of your jurisdiction's long range planning process?
- What data should we consider in developing the plan?
- What are your key interests for the Washington State Ferries 2040 Long Range Plan?

# Stakeholder Engagement



# Timeline



# Technical Advisory Group Roles

The role of the Technical Advisory Group is to:

- Help ensure the plan uses the most up to date local, regional, and state data
- Review and provide feedback on draft plan elements
- Represent local perspectives
- Help disseminate plan updates and public involvement opportunities within local jurisdictions
- Collaboratively engage with TAG members
- Assist in building/maintaining support for the plan

# Technical Advisory Group Roles

The WSF project team will:

- Provide background materials, data, and public input
- Respond to questions and requests quickly and as thoroughly as possible
- Attend TAG meetings to answer questions and inform discussion
- Consider and address TAG input when developing the plan
- Report back to TAG members on how the project team considered and addressed input in the final plan

# Look ahead

- WSF develops plan scope and hires consultant
- Next TAG meeting: September