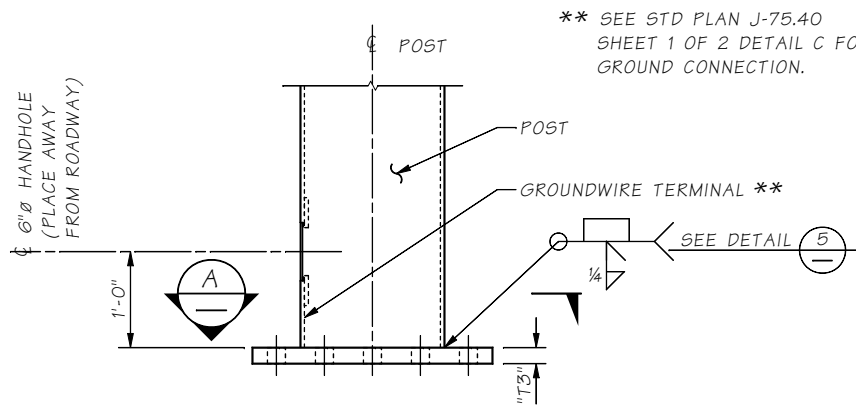
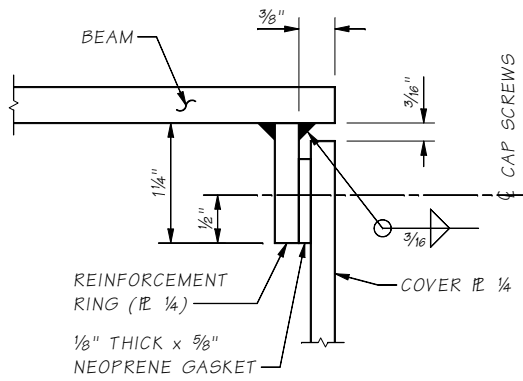


Last revised on : 4/26/16

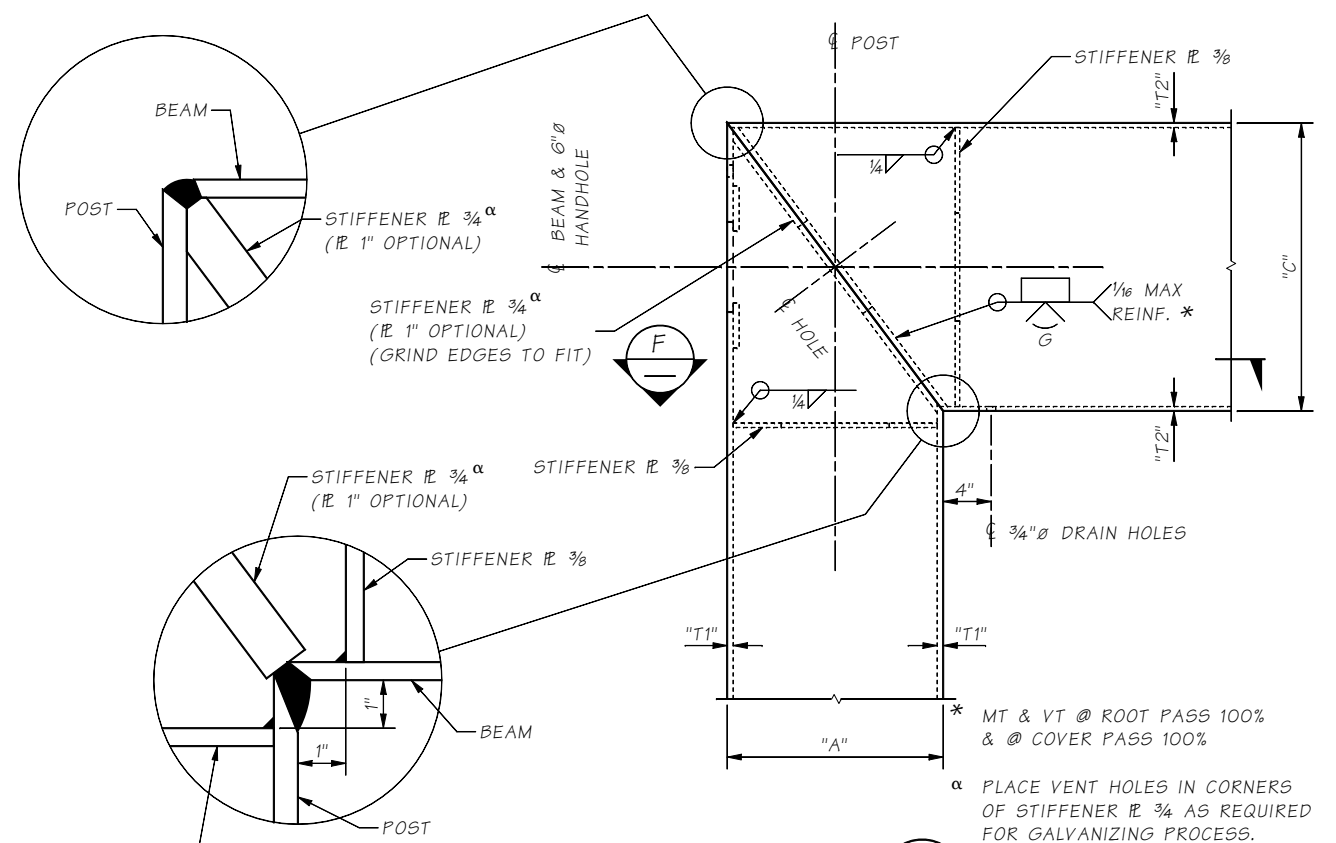
JOB NO. 10.1-A2-2



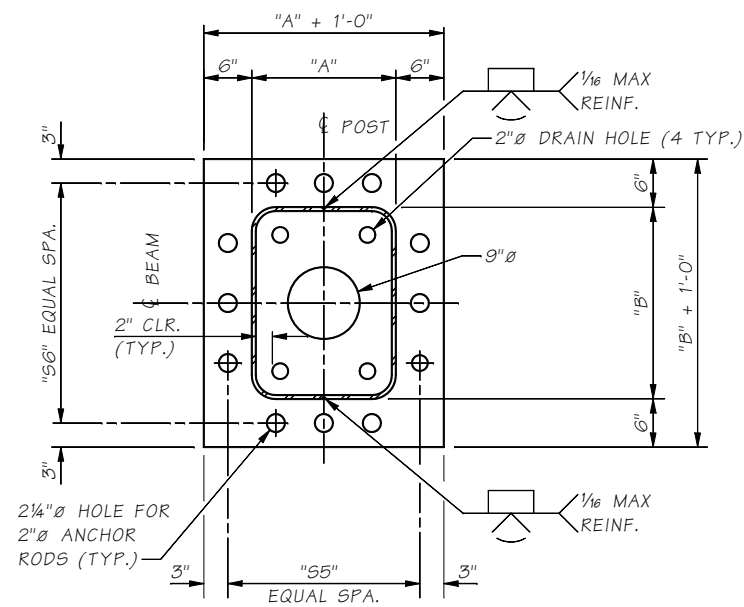
DETAIL 3
POST BASE
10.1-A2-1



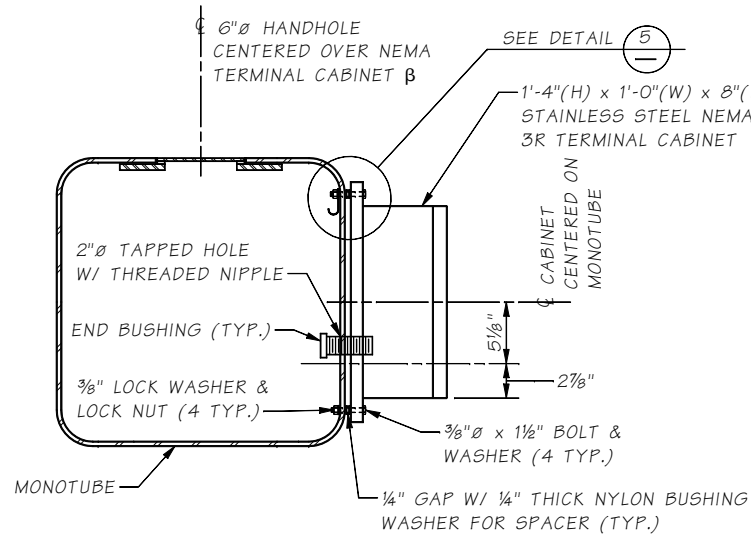
DETAIL 4
FOR CANTILEVER STRUCTURES ONLY.
1/4" CAP SCREWS ASTM F-593 ~
TAP REINFORCEMENT RING WITH 8
TOTAL EQUALLY SPACED AROUND COVER R



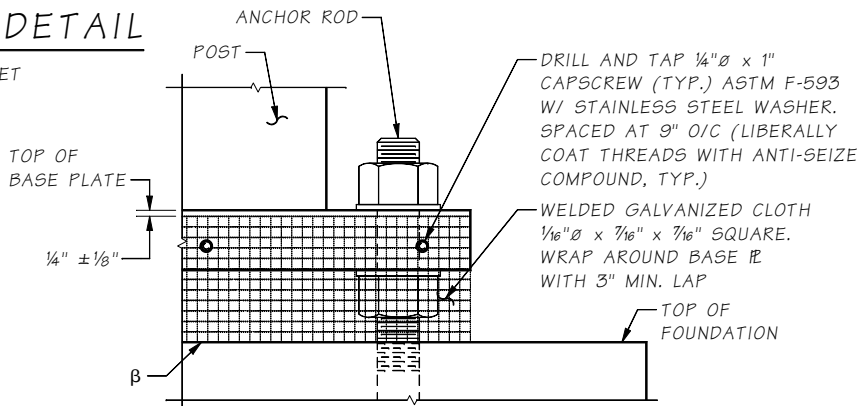
DETAIL 1
10.1-A2-1



SECTION A

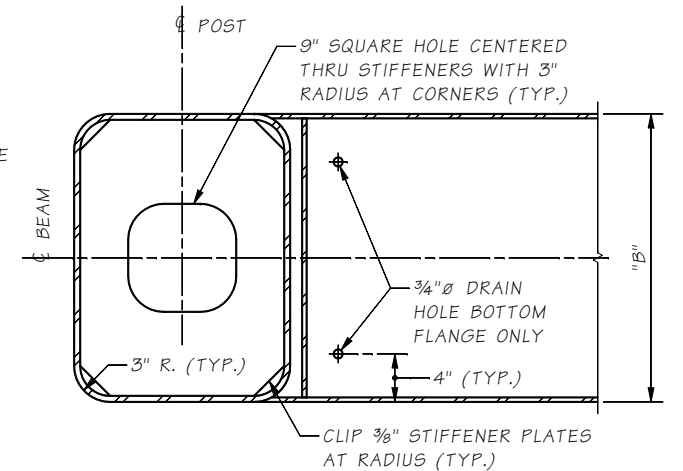


NEMA 3R TERMINAL CABINET DETAIL
B IF NO OTHER HANDHOLE IS WITHIN 1'-6" OF CABINET

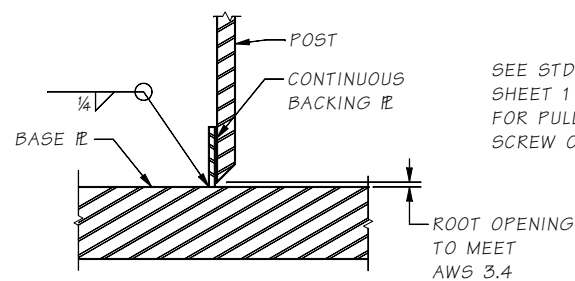


SCREEN DETAIL
PLACE SCREEN AS INDICATED

B BOTTOM OF SCREEN TO BE IN FULL CONTACT WITH TOP OF FOUNDATION. MAY OVERSIZE HEIGHT AND TRIM BOTTOM OF SCREEN TO FIT TOP OF FOUNDATION AS NEEDED TO BE IN FULL CONTACT.

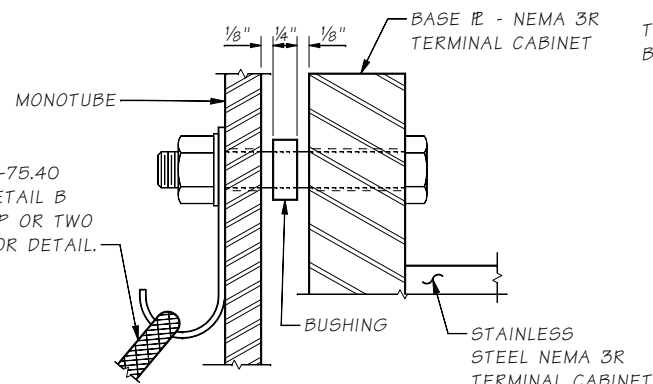


SECTION F
DIAGONAL STIFFENER
NOT SHOWN



DETAIL 6

SEE STD. PLAN J-75.40 SHEET 1 OF 2. DETAIL B FOR PULLING GRIP OR TWO SCREW CONNECTOR DETAIL.



DETAIL 5

Bridge Design Engr.	M:STANDARDS\Sign Bridges\MT_CANT_STRUCT_DETAILS_1.MAN	REGION NO.	STATE	FED. AID PROJ. NO.	SHEET NO.	TOTAL SHEETS
Supervisor		10	WASH.			
Designed By		JOB NUMBER				
Checked By						
Detailed By						
Bridge Projects Engr.						
Prelim. Plan By						
Architect/Specialist	DATE	REVISION	BY	APPD		

BRIDGE AND STRUCTURES OFFICE



STANDARD MONOTUBE SIGN STRUCTURES

MONOTUBE CANTILEVER STRUCTURAL DETAILS 1

BRIDGE SHEET NO.
SHEET
OF
SHEETS