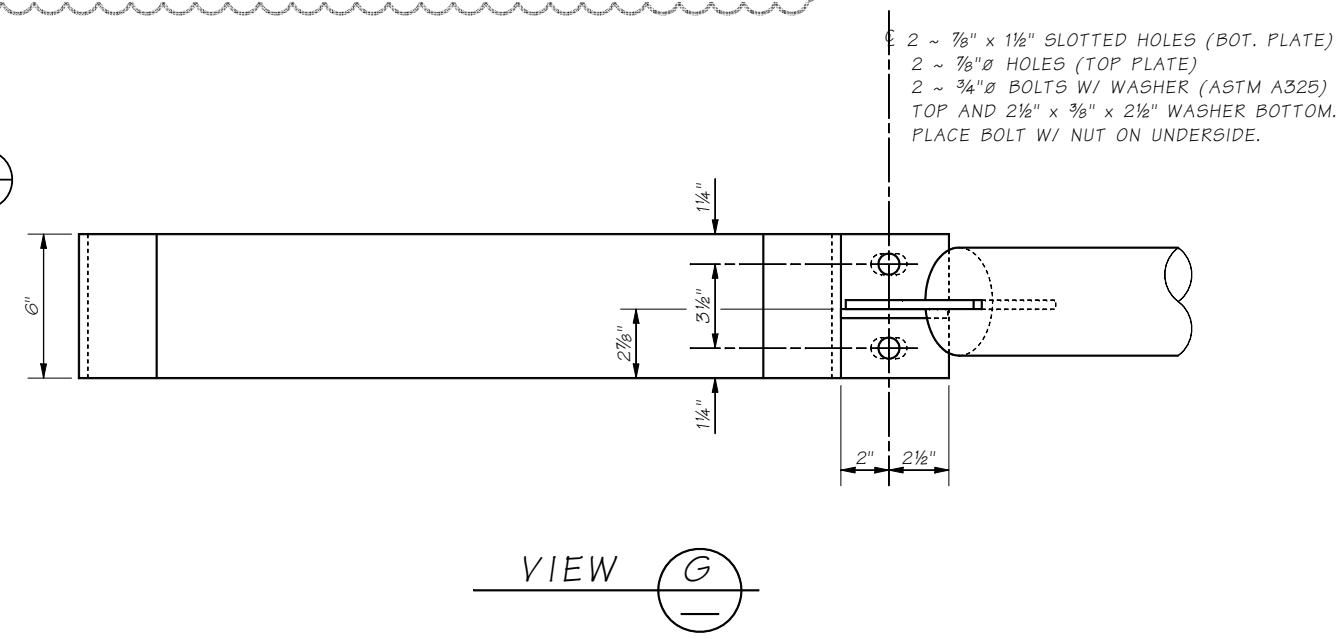
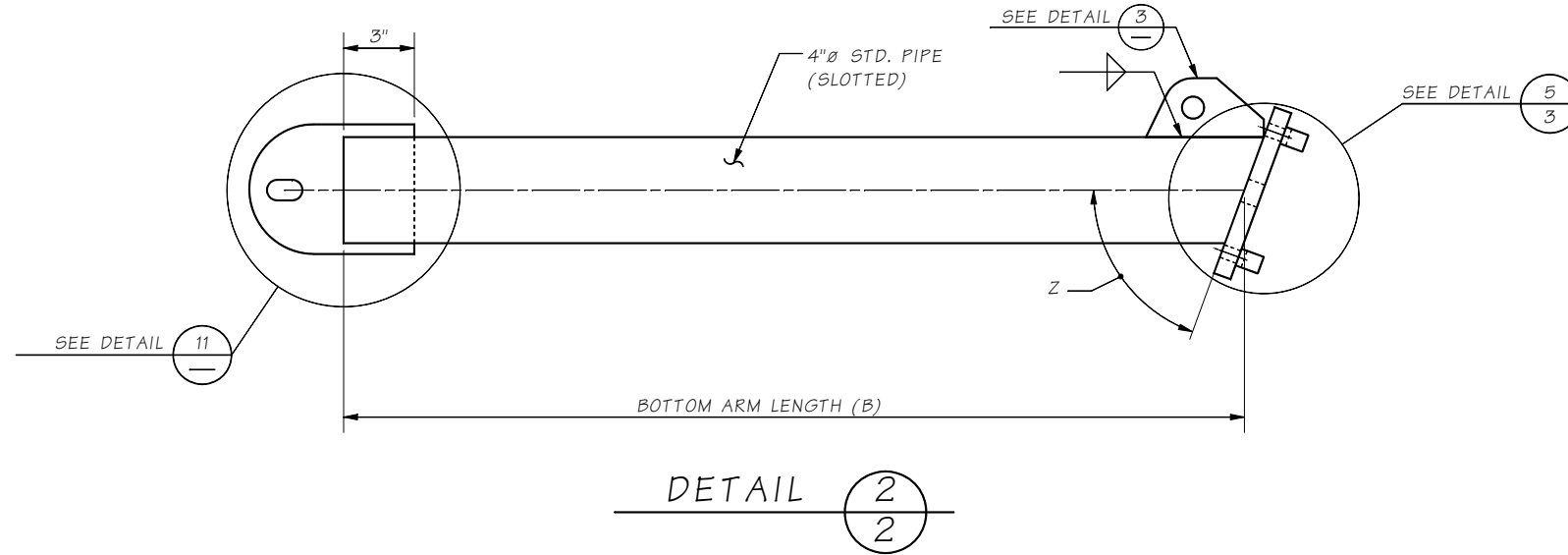


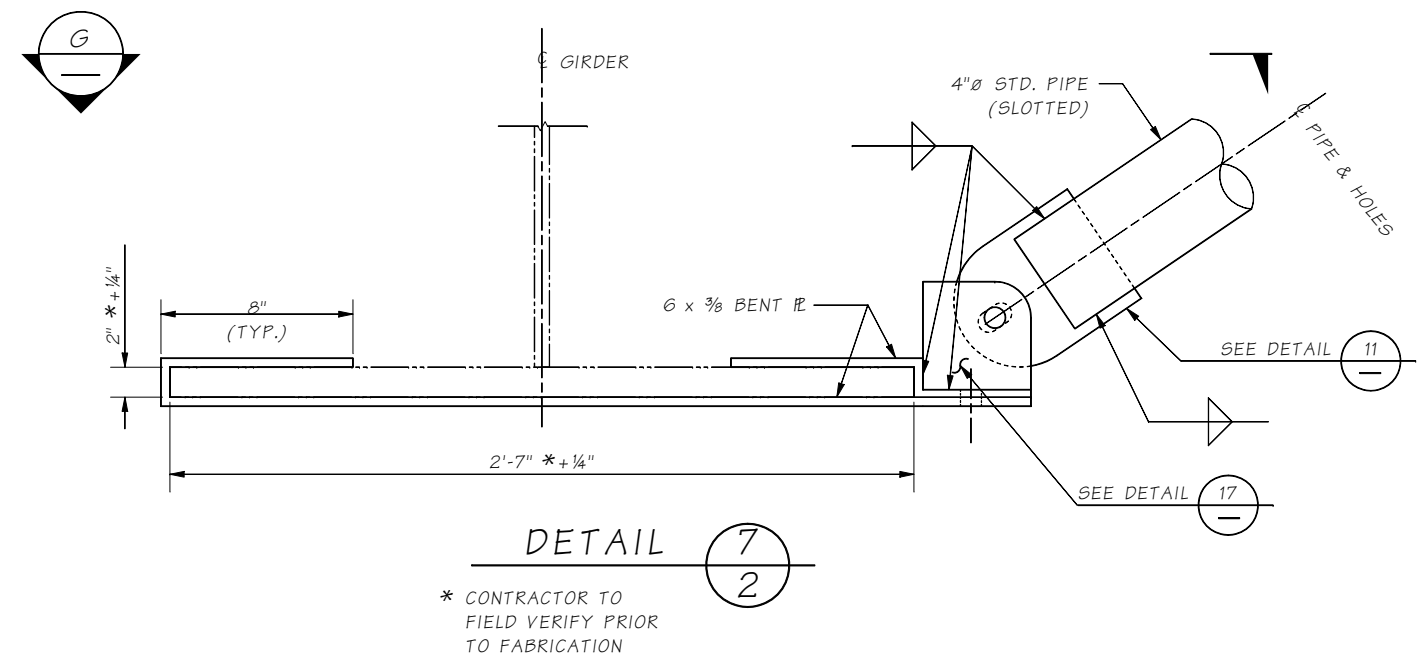
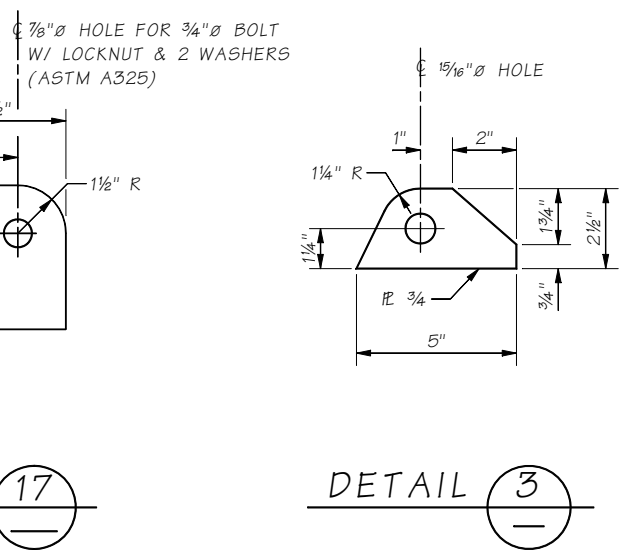
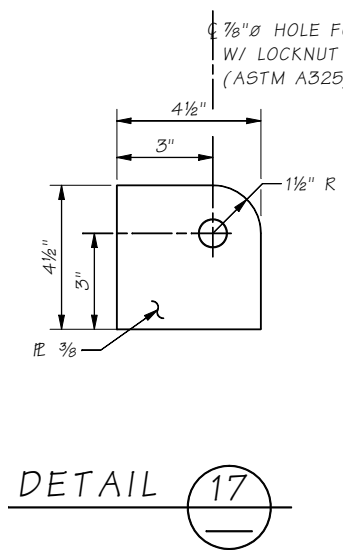
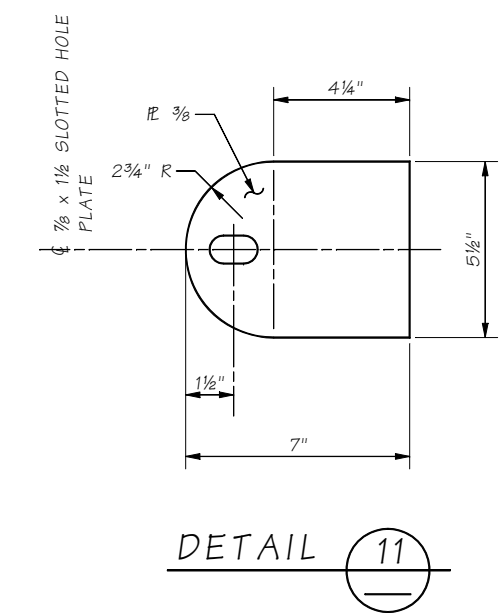
SIGN BRACKET NO.	Z° (CONTRACTOR TO VERIFY)			
	SUPPORT #1	SUPPORT #2	SUPPORT #3	SUPPORT #4
1	78°	72°	66°	60°

NOTES TO DESIGNER:

- REMOVE DETAIL C IF BRACING ROD IS NOT USED. ALSO REMOVE CALL OUTS AND LINEWORK FROM OTHER DETAILS.



- 2 ~ 7/8" x 1 1/2" SLOTTED HOLES (BOT. PLATE)
- 2 ~ 7/8" Ø HOLES (TOP PLATE)
- 2 ~ 3/4" Ø BOLTS W/ WASHER (ASTM A325) TOP AND 2 1/2" x 3/8" x 2 1/2" WASHER BOTTOM. PLACE BOLT W/ NUT ON UNDERSIDE.



Last Revised: 06/5/2018

SHEET

10.1-A6-4C

Bridge Design Engr.	M:\STANDARDS\Bridge Mounted Sign Brackets\4c - BMSB DETAILS 2 OF 3 - STEEL GIRDER.MAN	REGION NO.	STATE	FED. AID PROJ. NO.	SHEET NO.	TOTAL SHEETS
Supervisor		10	WASH.			
Designed By		JOB NUMBER				
Checked By						
Detailed By						
Bridge Projects Engr.						
Prelim. Plan By						
Architect/Specialist						
DATE	REVISION	BY	APP'D			

**BRIDGE AND STRUCTURES OFFICE**

**Washington State Department of Transportation**

BRIDGE MOUNTED SIGN BRACKET  
DETAILS 2 OF 3