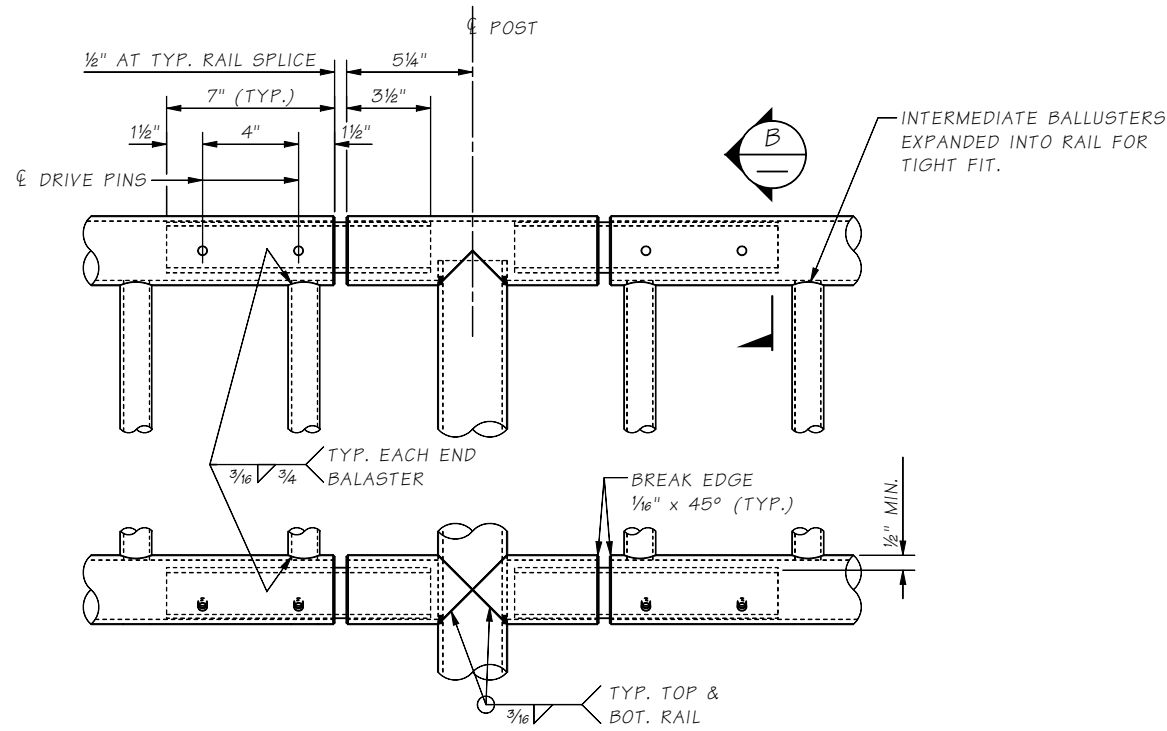
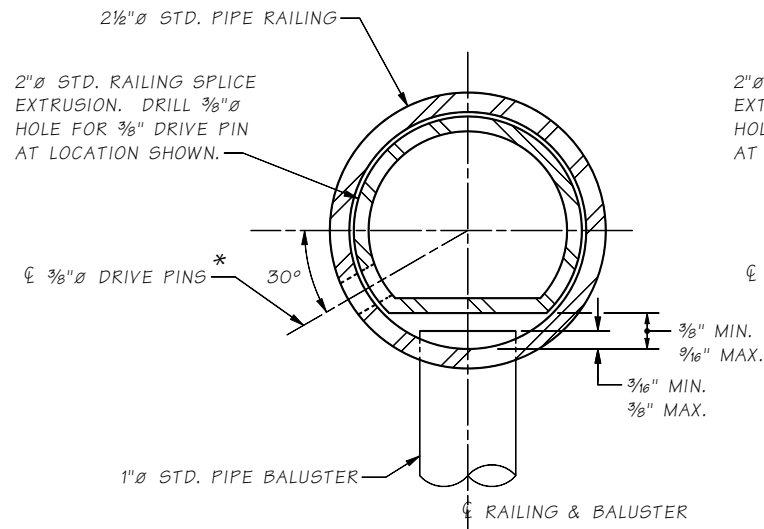
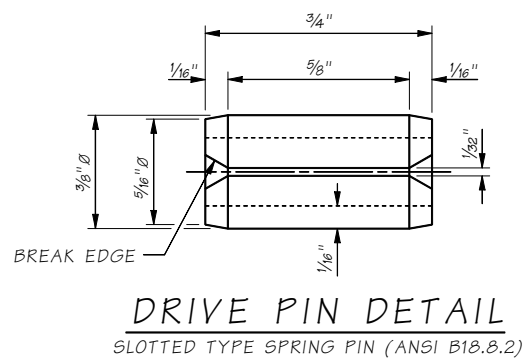


Last revised on : 03/09/2015

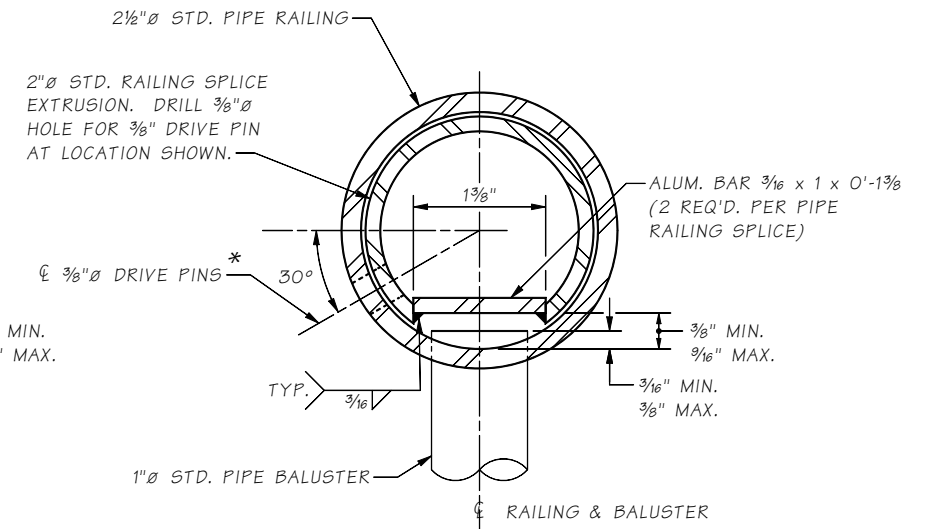


DETAIL 1



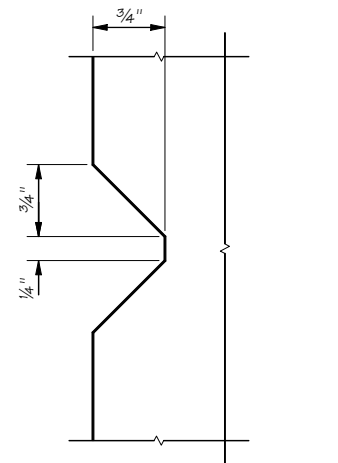
SECTION B
OPTION #1

* LOCATE ON OPPOSITE SIDE OF TRAFFIC. DRIVE PINS SHALL BE DRIVEN FLUSH WITH THE OUTSIDE FACE OF THE RAILING.

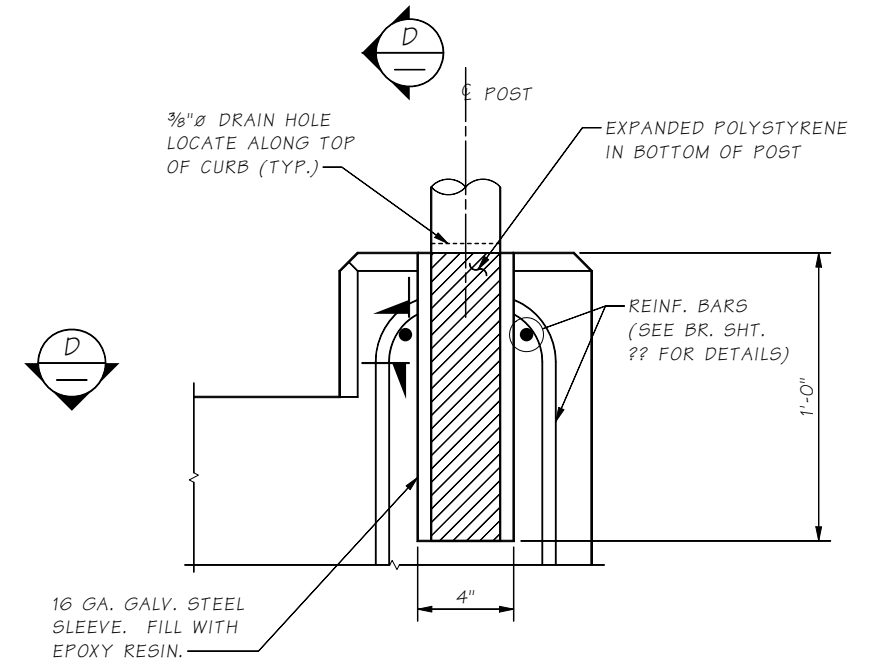


SECTION B
OPTION #2

* LOCATE ON OPPOSITE SIDE OF TRAFFIC. DRIVE PINS SHALL BE DRIVEN FLUSH WITH THE OUTSIDE FACE OF THE RAILING.



SECTION D



SECTION C
1

Bridge Design Engr.	\\wsdot.local\hqa\Group\BDO\CADProjects\STANDARDS\BP_Rails\4ftPedRail_Alumin 2.MAN						
Supervisor		REGION NO.	STATE	FED. AID PROJ. NO.	SHEET NO.	TOTAL SHEETS	
Designed By		10	WASH.				
Checked By		JOB NUMBER					
Detailed By							
Bridge Projects Engr.							
Prelim. Plan By							
Architect/Specialist	DATE	REVISION	BY	APP'D			

BRIDGE AND STRUCTURES OFFICE



STANDARD RAILINGS

PEDESTRIAN RAILING
DETAILS 2 OF 2

BRIDGE SHEET NO.
SHEET
OF
SHEETS

SR JOB NO. 10.5-A4-2