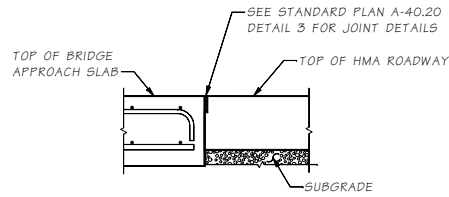
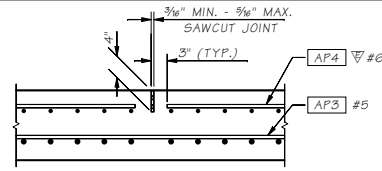


**PCCP ROADWAY DOWEL BAR DETAIL**

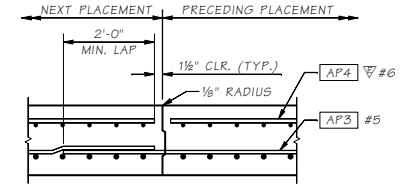
INSERT DOWELS PARALLEL TO CENTER LINE  
ALONG TRANSVERSE CONSTRUCTION JOINT.



**HMA ROADWAY JOINT DETAIL**

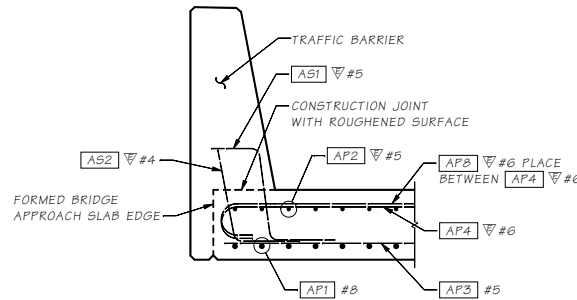


**LONGITUDINAL JOINT DETAIL**



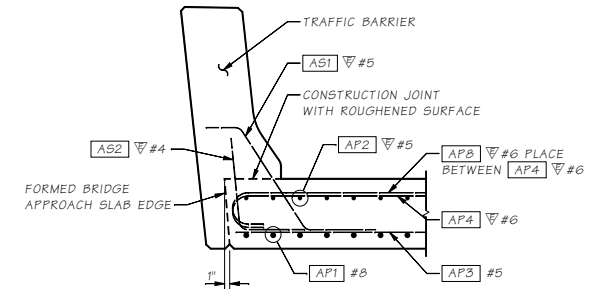
**ALTERNATE LONGITUDINAL JOINT DETAIL**

EDGE PRECEDING PLACEMENT ONLY WITH 1/8" RADIUS.

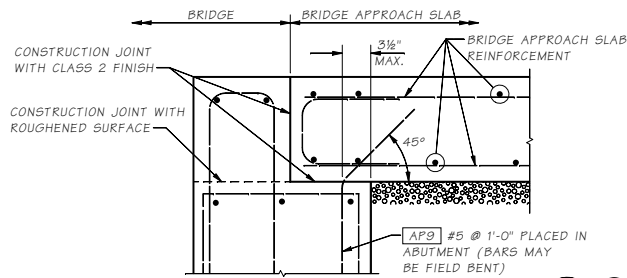


**SECTION A 1**

eliminate traffic barrier type  
that will not be used.



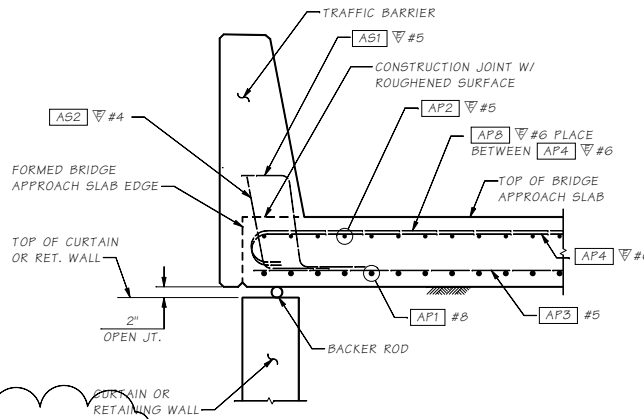
**SECTION A 1**



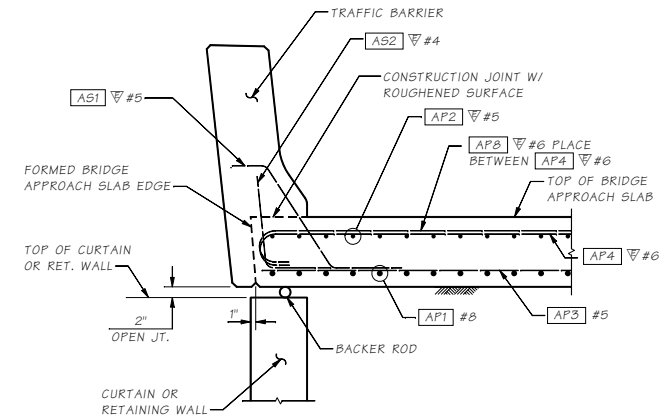
**ANCHOR DETAIL**

L type abutment

note:  
designer shall add construction  
joint with class 2 finish callout  
to abutment sheets.



**SECTION A 1**



**SECTION A 1**

Bridge Design Engr.	M:\STANDARDS\Approach Slabs\Approach Slab 2.mxd	DATE	REVISION	BY	APPD
Supervisor					
Designed By					
Checked By					
Detailled By					
Bridge Projects Engr.					
Prelim. Plan By					
Architect/Specialist					
Architect/Engineer					

BRIDGE  
AND  
STRUCTURES  
OFFICE



APPROACH SLABS

BRIDGE APPROACH SLAB  
DETAILS 2 OF 3

BRIDGE  
SHEET  
NO.

Last revised on : 1/21/2016

10.6-A1-2 SHEET NO.