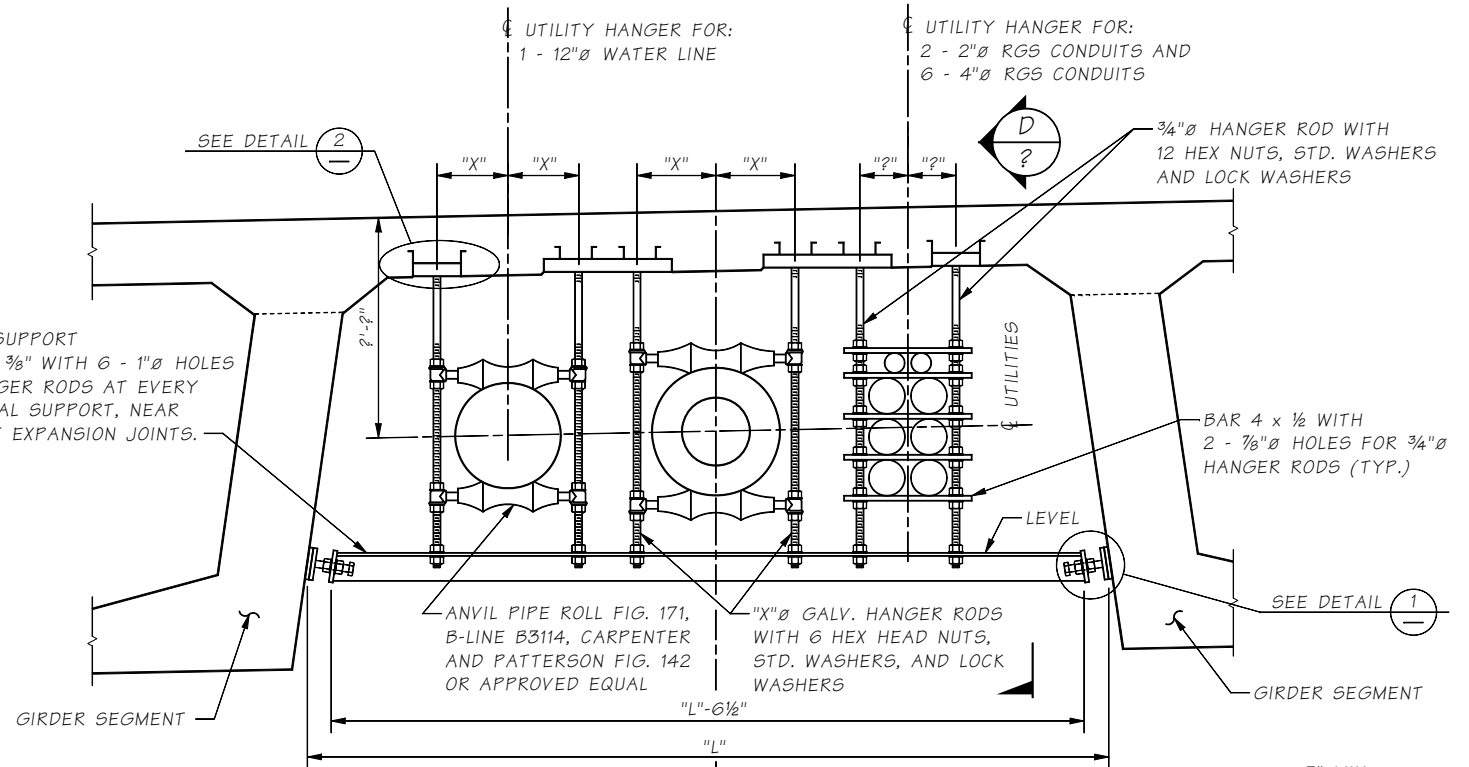
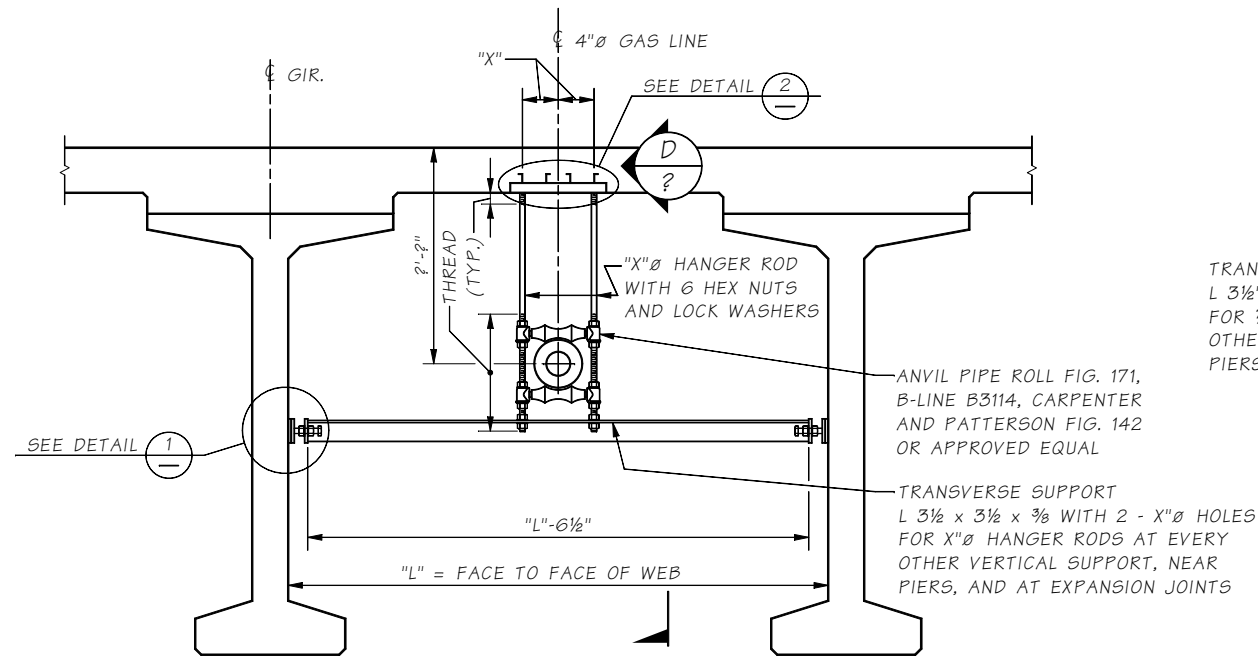


Last Revised: 06/21/2017

10.8-A1-1
SR
JOB NO.



HANGER UTILITY SUPPORT

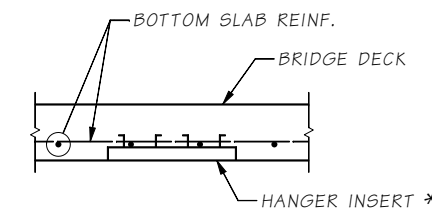
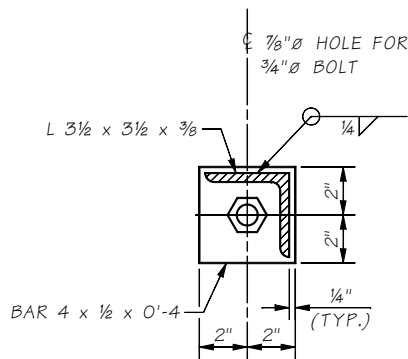
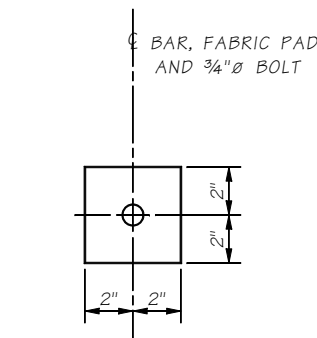
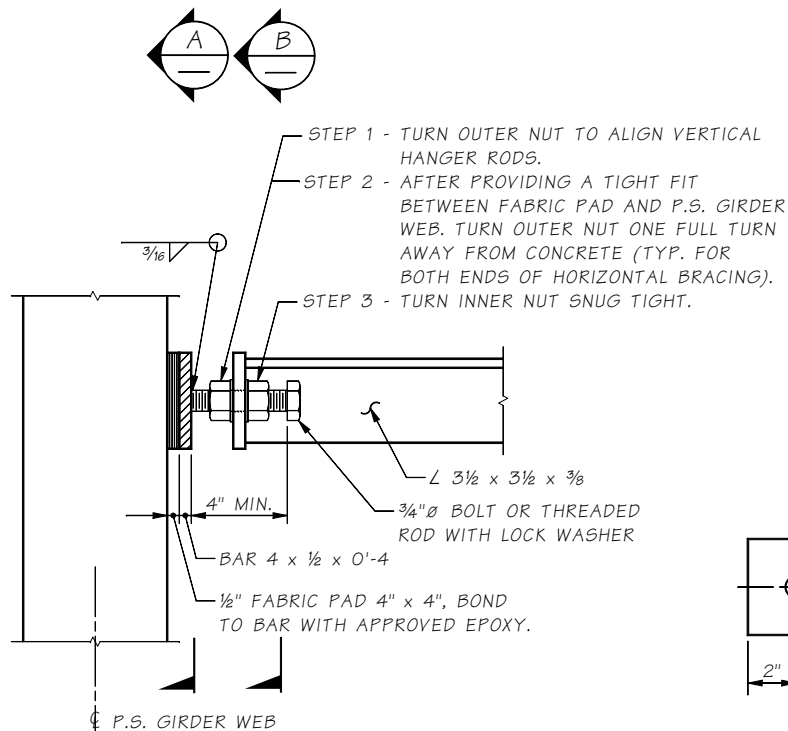
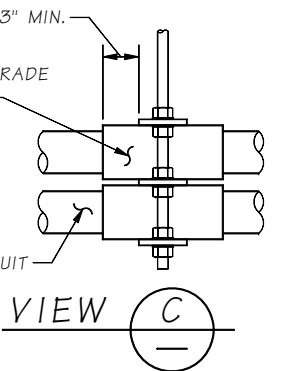
"X" DETERMINED FROM MANUFACTURER

NOTES:

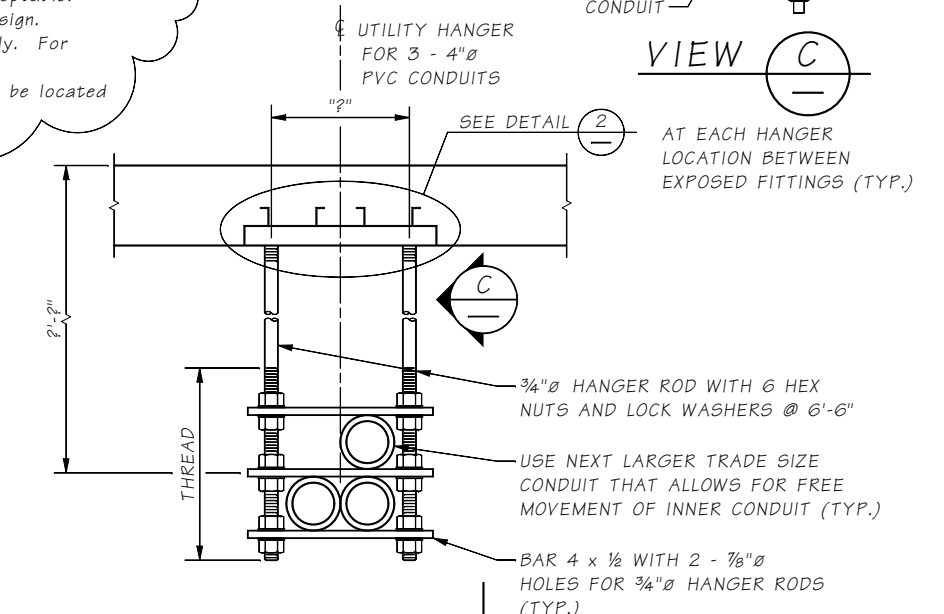
1. ALL MATERIALS SHALL BE GALVANIZED AFTER FABRICATION PER AASHTO M 111 OR AASHTO M 232 EXCEPT PIPE ROLLERS.
2. PAINT ROLLERS WITH THREE COATS OF GALVANIZING REPAIR PAINT. SEE STD. SPEC. SECTION 9-08.1(2)B.

NOTES TO DESIGNERS:

- Verify that the insert does not interfere with reinforcement.
- Verify that the load on the insert and rod is acceptable.
- See BDM chapter 10, section 10.8.6 for insert design.
- "DETAIL 1" is provided for prestressed girders only. For steel girders use angle iron bolted connections.
- If geometry requires, the transverse support may be located just above the utility.



* COOPER B-LINE B22-1-??, POWERSTRUT PS 349-??, OR UNISTRUT P32??, WITH SPRING NUT (TYP.). CHASE THREADS ON HANGER ROD FOR THREAD COMPATIBILITY WITH SPRING NUT. INSERT TO BE INSTALLED LEVEL LONGITUDINALLY AND TRANSVERSELY. PLACE INSERT TO PROVIDE FOR TRANSVERSE ADJUSTMENT OF HANGER RODS. HANGER RODS SHALL NOT BE WITHIN 2" OF THE END OF THE INSERT. TWO INSERTS MAY BE USED TO ACCOMMODATE SUPERELEVATION.



Bridge Design Engr.	M:\STANDARDS\Utilities\Utility Hanger Details.MAN	REGION NO.	STATE	FED. AID PROJ. NO.	SHEET NO.	TOTAL SHEETS
Supervisor		10	WASH.			
Designed By		JOB NUMBER				
Checked By						
Detailed By						
Bridge Projects Engr.						
Prelim. Plan By						
Architect/Specialist	DATE	REVISION	BY	APPD		

Thu Jun 22 08:31:06 2017

BRIDGE AND STRUCTURES OFFICE



UTILITY INSTALLATION GUIDELINE DETAILS

UTILITY HANGER DETAILS

BRIDGE SHEET NO.
SHEET
OF
SHEETS