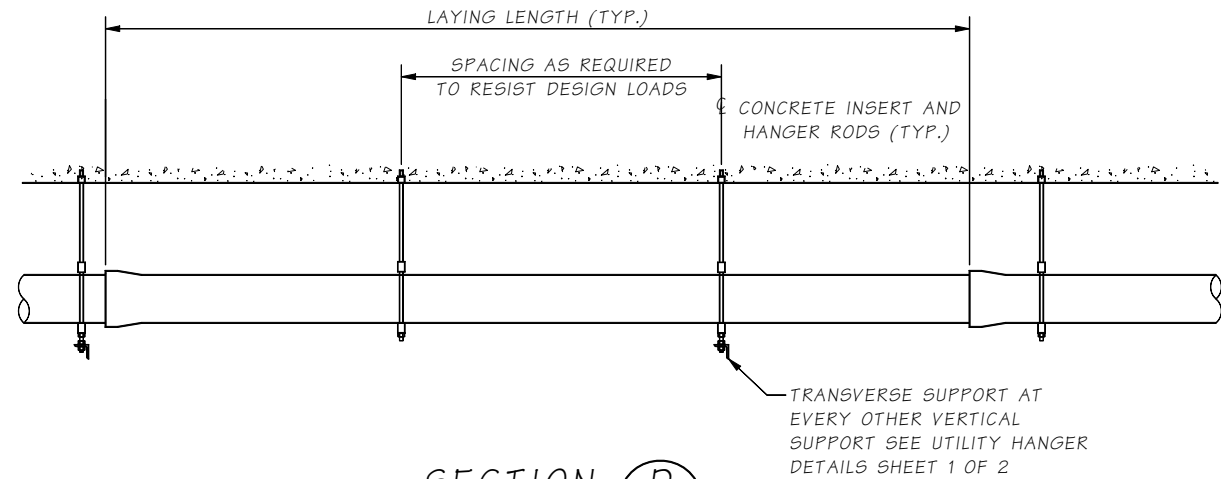
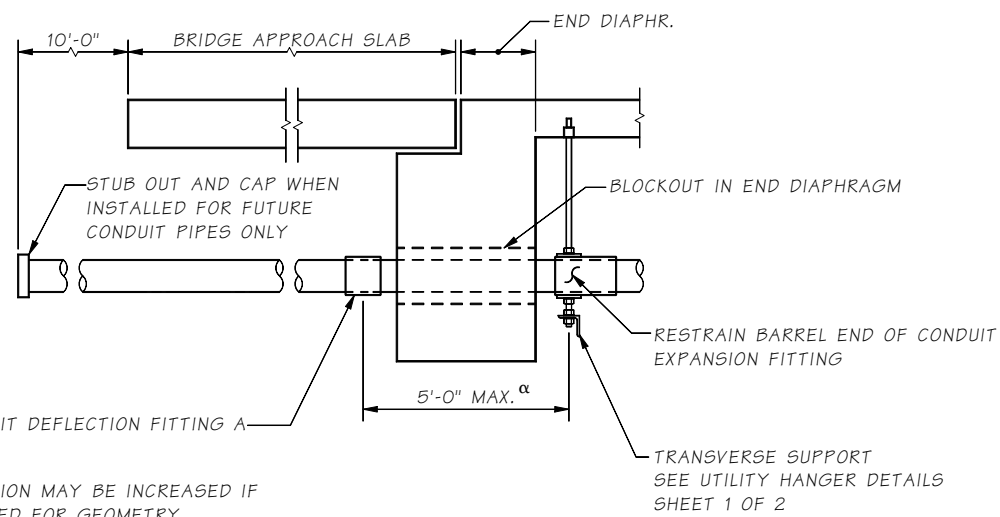


SECTION **D**  
RGS OR PVC CONDUIT



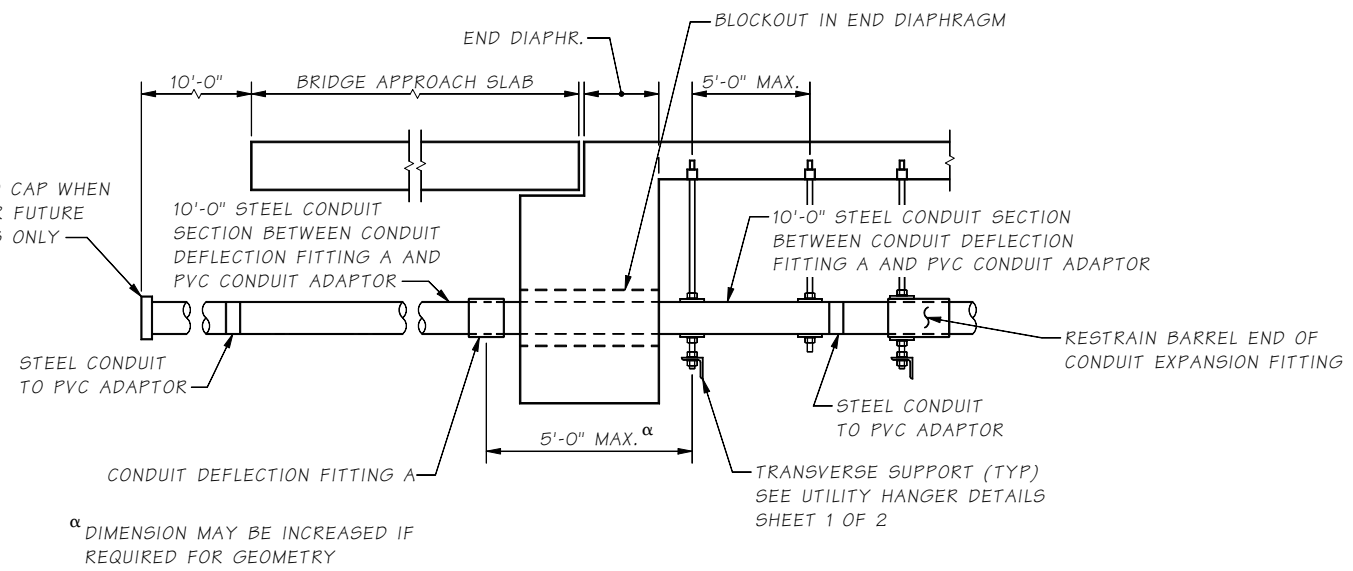
SECTION **D**  
UTILITIES OTHER THAN RGS OR PVC CONDUITS

NOTE TO DESIGNER:  
COORDINATE WITH UTILITY ENGINEER FOR CONDUIT PLACEMENT DETAILS AT ABUTMENTS FOR UTILITIES OTHER THAN RGS OR PVC.



UTILITY CONDUIT  
PLACEMENT DETAIL ~ RGS

SEE TRAFFIC BARRIER SHEETS FOR CONDUIT DEFLECTION FITTING A DETAIL.



UTILITY CONDUIT  
PLACEMENT DETAIL ~ PVC

- NOTES:
1. SET POSITION OF EXPANSION FITTING BASED ON MANUFACTURER RECOMMENDATIONS AND TEMPERATURE AT TIME OF INSTALLATION.
  2. EXPANSION FITTINGS SHALL BE INSTALLED EVERY 100'-0" MAX, AND SHALL ACCOMMODATE 5.1 INCHES OF MOVEMENT. THE DESIGN TEMPERATURE RANGE IS 125 DEGREES (-15° TO 110°).
  3. SEE TRAFFIC BARRIER SHEETS FOR CONDUIT DEFLECTION FITTING A DETAIL.

Last revised on : 7/8/2015

10.8-A1-2

Bridge Design Engr.	M:\STANDARDS\Utilities\Utility Hanger Details 2.MAN				REGION NO.	STATE	FED. AID PROJ. NO.	SHEET NO.	TOTAL SHEETS
Supervisor					10	WASH.			
Designed By					JOB NUMBER				
Checked By									
Detailed By									
Bridge Projects Engr.									
Prelim. Plan By									
Architect/Specialist	DATE	REVISION	BY	APP'D					

Wed Jul 08 09:14:40 2015

BRIDGE AND STRUCTURES OFFICE



UTILITY INSTALLATION GUIDELINE DETAILS

UTILITY HANGER DETAILS

BRIDGE SHEET NO.  
SHEET  
OF  
SHEETS