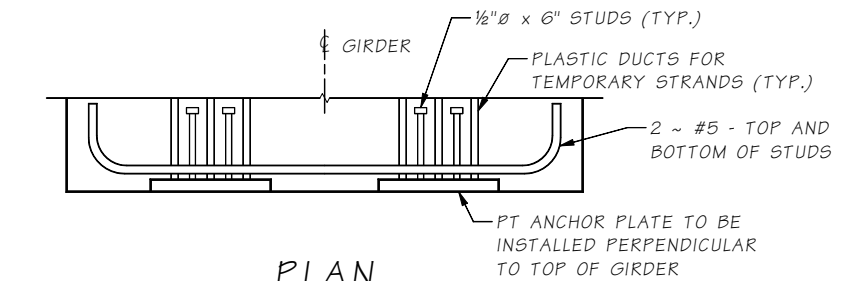
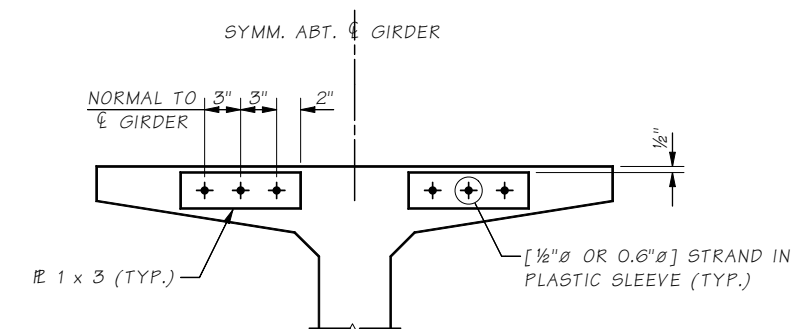


**PLAN  
PRETENSIONED TEMPORARY  
TOP STRANDS**

POST-TENSIONED TEMPORARY TOP STRANDS SIMILAR, EXCEPT 10'-0" LENGTH OF BONDING OCCURS AT ONE END ONLY. THE OPPOSING END IS ANCHORED WITH PLATES AND STRAND CHUCKS. SEE "GIRDER SCHEDULE" FOR NUMBER OF TEMPORARY STRANDS REQUIRED.

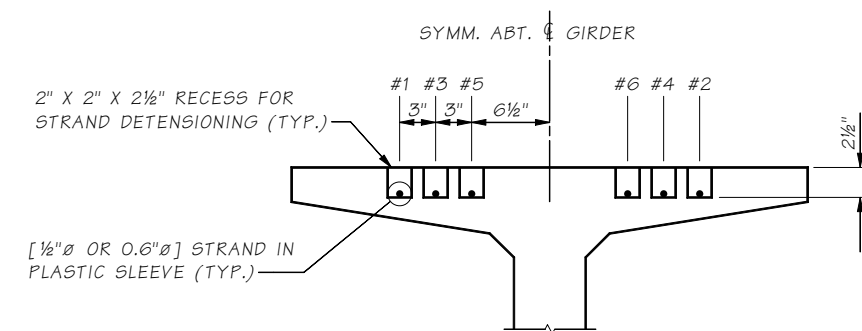


**PLAN  
TEMPORARY STRAND  
POST-TENSIONED ALTERNATE**

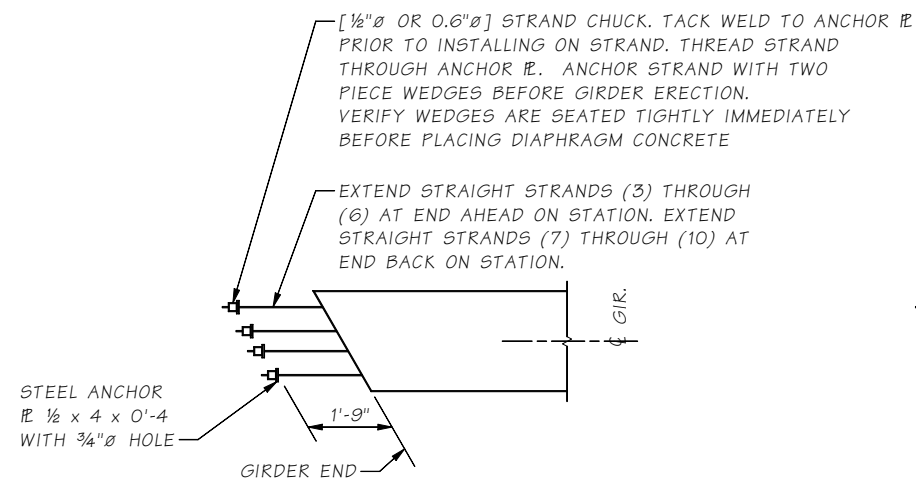


**END VIEW  
TEMPORARY STRAND  
POST-TENSIONED ALTERNATE**

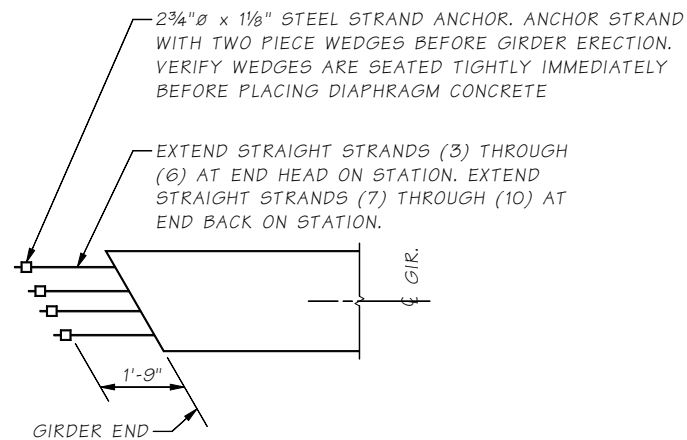
ADJUST #4 BARS TO CLEAR THE STEEL PLATE



**SECTION A**



**ALTERNATE #1**



**ALTERNATE #2**

**STRAND EXTENSION DETAIL**

Number of extended strands shall be determined by the designer.

SR JOB NO. 5.6-A3-10 SHEET 3

Bridge Design Engr.	M:\STANDARDS\Girders\W74G\W74G3.man		REGION NO.	STATE	FED. AID PROJ. NO.	SHEET NO.	TOTAL SHEETS
Supervisor			10	WASH.			
Designed By			JOB NUMBER				
Checked By							
Detailed By							
Bridge Projects Engr.							
Prelim. Plan By							
Architect/Specialist	DATE	REVISION	BY	APP'D			

**BRIDGE AND STRUCTURES OFFICE**



**STANDARD PRESTRESSED CONCRETE GIRDERS**  
W74G GIRDER  
DETAILS 3 OF 3

BRIDGE SHEET NO.  
SHEET  
OF  
SHEETS