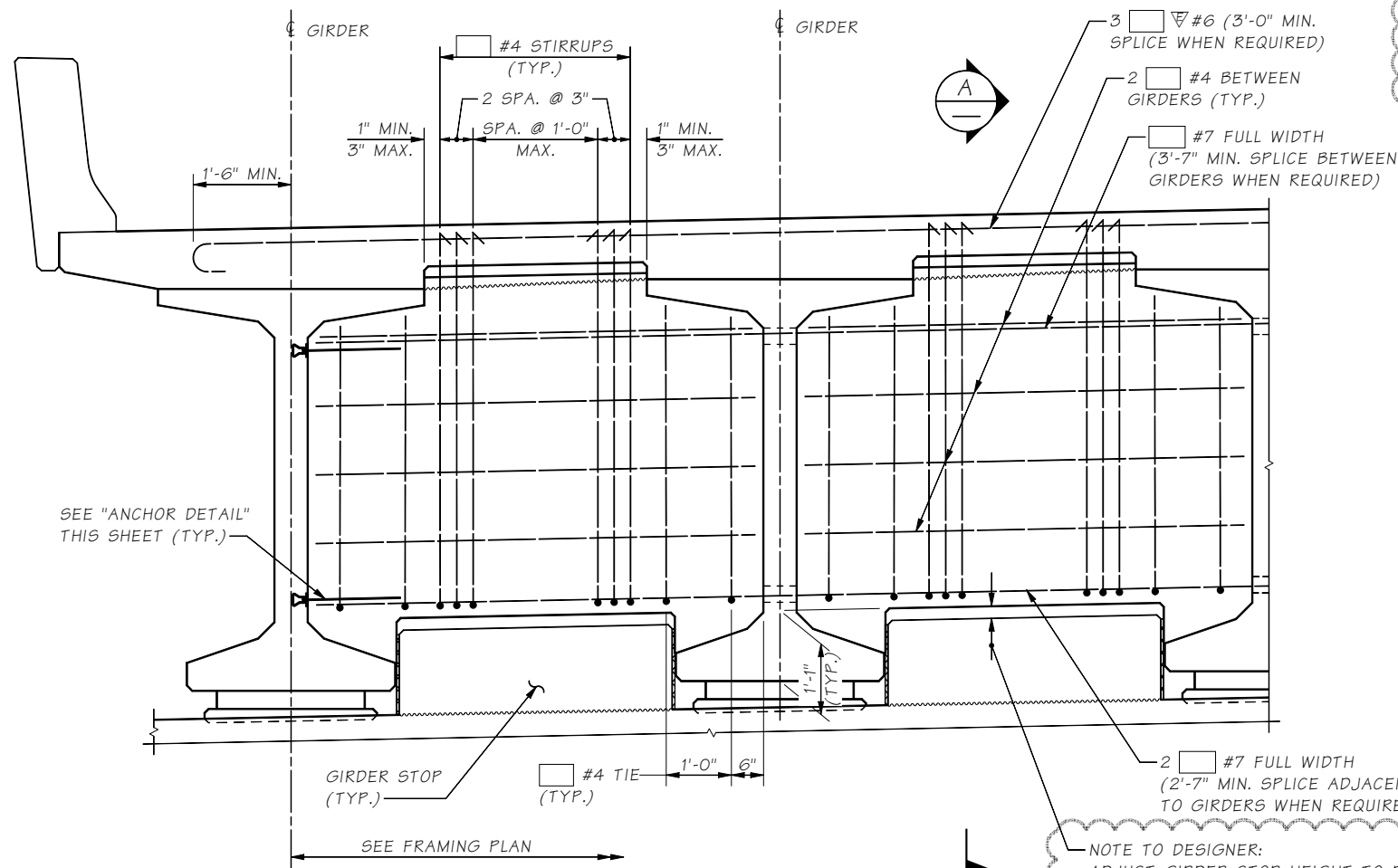


Last revised on : 01/01/2015

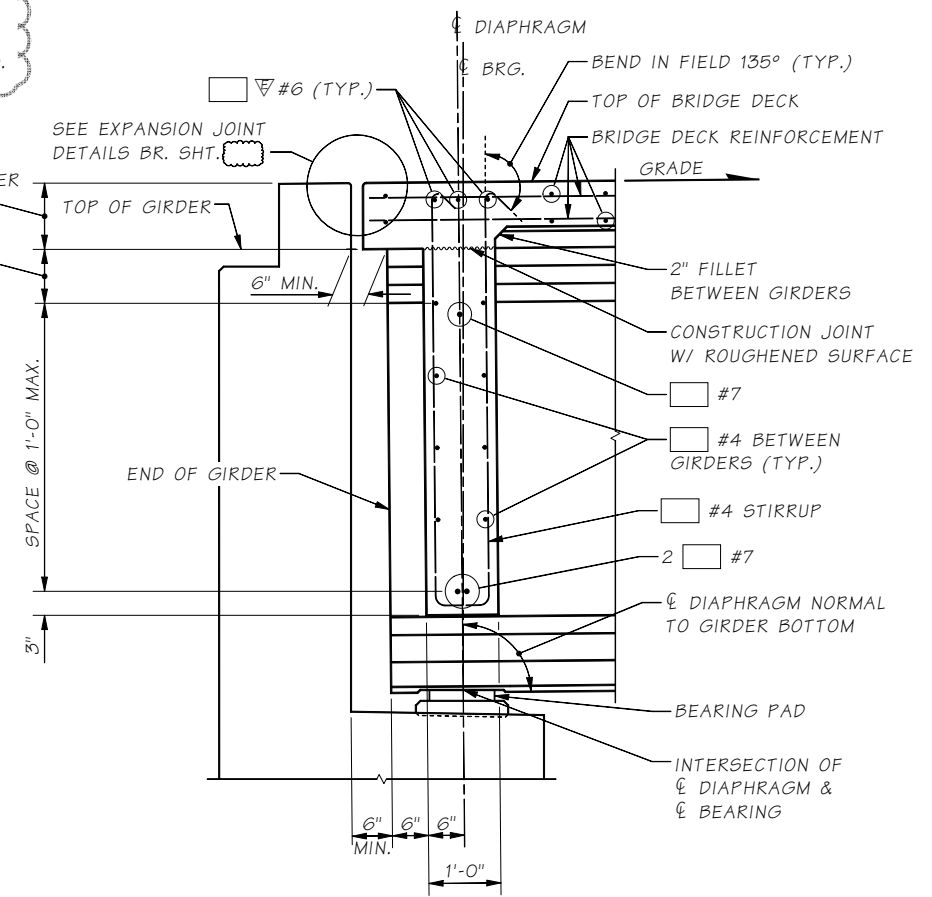
SR FILE NO. SHEET

5.0-A4-8



**NOTE TO DETAILER:**  
Revise Details to show correct girder shape and girder spacing.

"A" DIM. AT  $\phi$  GIRDER AND  $\phi$  BEARING  
9" AT  $\phi$  GIRDER



**SECTION A**

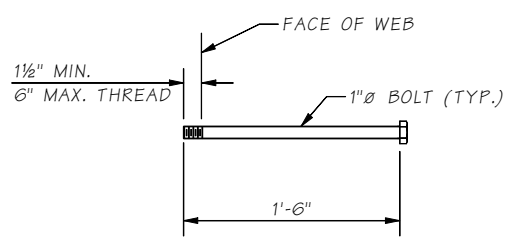
LONGITUDINAL DIMENSIONS ARE NORMAL TO DIAPHRAGM.  
GIRDER STOP NOT SHOWN FOR CLARITY.

**ELEVATION END DIAPHRAGM**  
DIMENSIONS ARE ALONG  $\phi$  DIAPHRAGM

**NOTE TO DESIGNER:**  
ADJUST GIRDER STOP HEIGHT TO PROVIDE 2" MIN. GAP TO BOTTOM OF DIAPHRAGM.

**NOTES:**

- GIRDERS SHALL BE HELD RIGIDLY IN PLACE WHEN DIAPHRAGMS ARE PLACED.
- IT MAY BE NECESSARY TO THREAD #7 REINFORCING BARS THROUGH HOLES IN GIRDERS PRIOR TO PLACING EXTERIOR GIRDERS.
- CUT/RELEASE GIRDER TEMPORARY STRANDS BEFORE CASTING DIAPHRAGM. SEE TEMPORARY STRAND CUTTING SEQUENCE.
- FOR CONCRETE PLACEMENT PROCEDURE SEE CONSTRUCTION SEQUENCE SHEETS.



**ANCHOR DETAIL**  
ASTM A-307

Bridge Design Engr.	M:\STANDARDS\Girders\WFI\END DIAPHRAGM - L ABUT.MAN					REGION NO.	STATE	FED. AID PROJ. NO.	SHEET NO.	TOTAL SHEETS
Supervisor						10	WASH.			
Designed By						JOB NUMBER				
Checked By										
Detailed By										
Bridge Projects Engr.										
Prelim. Plan By										
Architect/Specialist	DATE	REVISION	BY	APPD.						

Thu Mar 05 08:07:52 2015

**BRIDGE AND STRUCTURES OFFICE**



**STANDARD PRESTRESSED CONCRETE GIRDERS**  
L ABUTMENT END DIAPHRAGM DETAILS

BRIDGE SHEET NO.
SHEET
OF
SHEETS