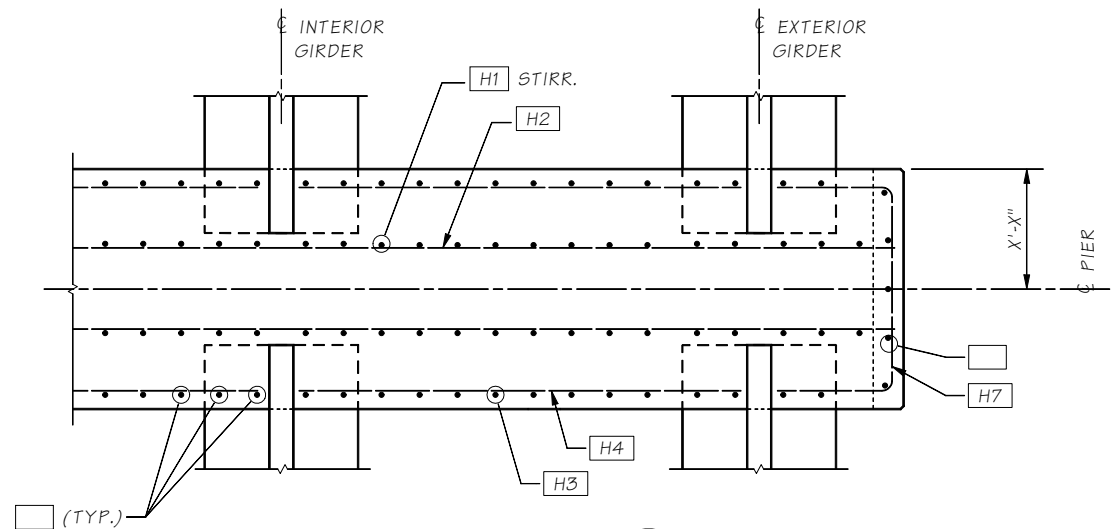


Last revised on : 12/02/2014

SR FILE NO. SHEETS

5.0-A4-9

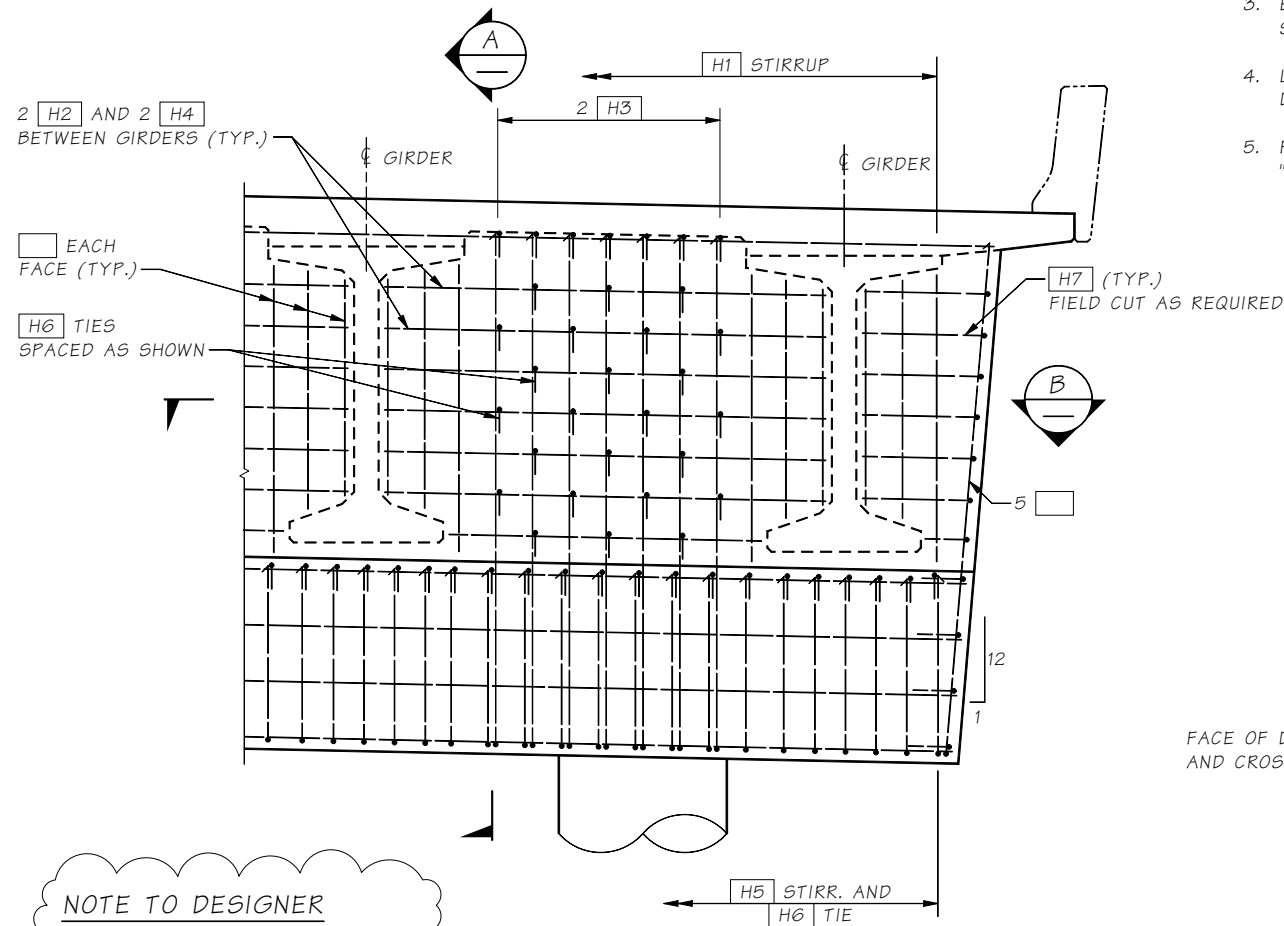


ELEVATION AT TOP OF OAK BLOCK

GIRDER	PIER #?	
	BACK STATION	AHEAD STATION

NOTES:

- GIRDERS SHALL BE HELD RIGIDLY IN PLACE WHEN DIAPHRAGMS ARE PLACED.
- CUT/RELEASE GIRDER TEMPORARY STRANDS BEFORE CASTING DIAPHRAGM AND BRIDGE DECK. SEE TEMPORARY STRAND CUTTING SEQUENCE.
- EXTENDED STRANDS AND GIRDER REINFORCING NOT SHOWN FOR CLARITY.
- LONGITUDINAL DIMENSIONS ARE NORMAL TO  $\phi$  DIAPHRAGM
- FOR CONCRETE PLACEMENT PROCEDURE SEE "SUPERSTRUCTURE CONSTRUCTION SEQUENCE" SHEET.

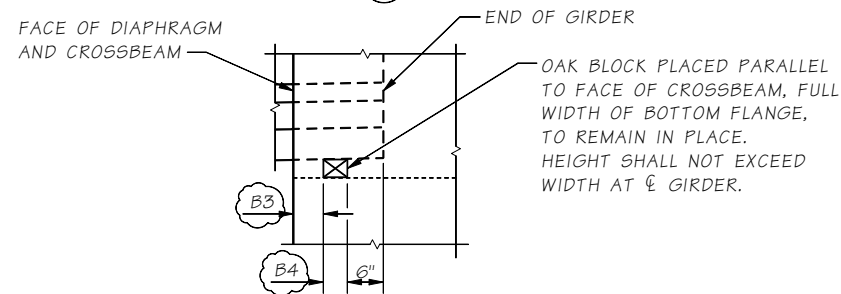


ELEVATION

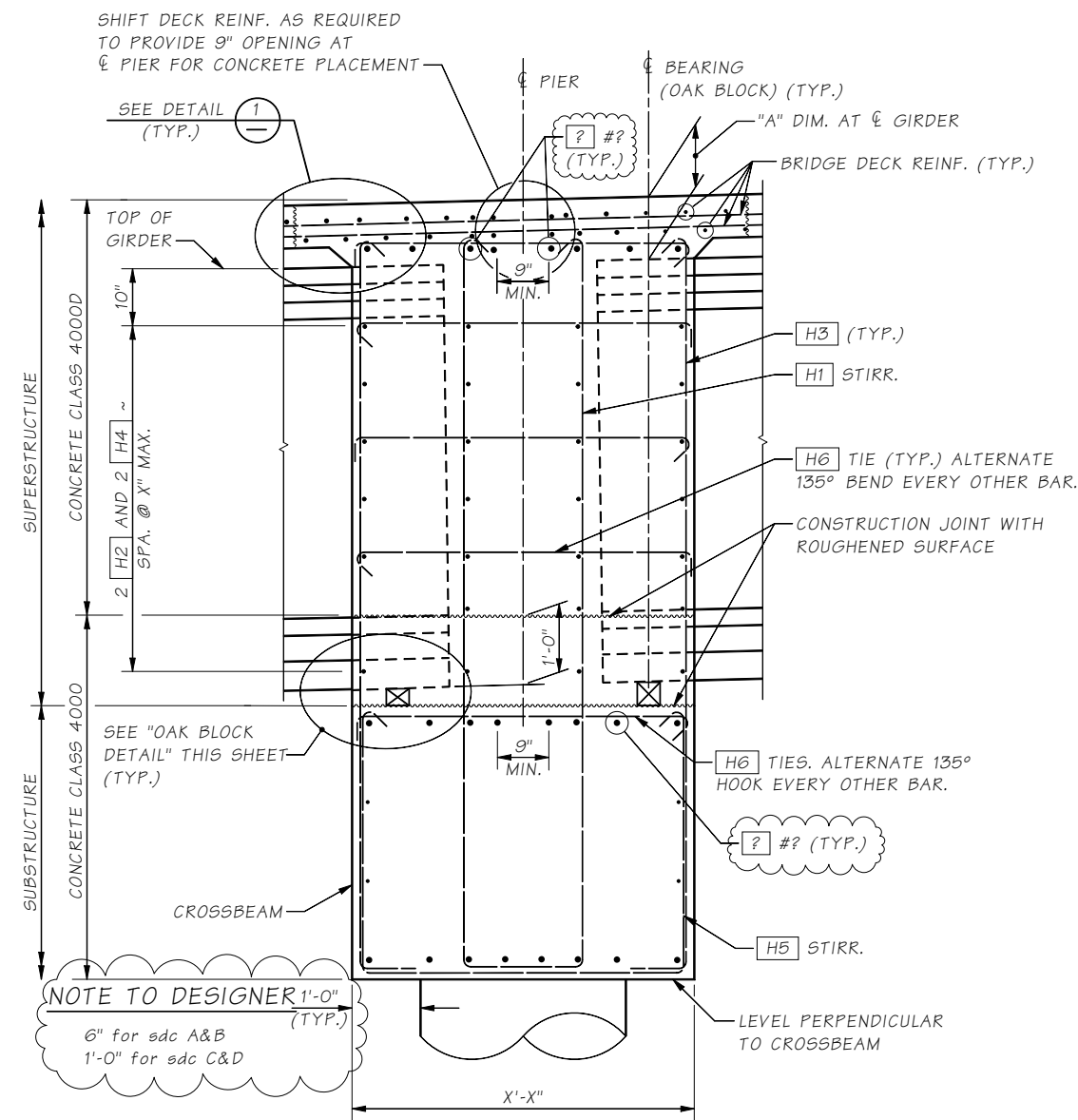
GIRDER	B3	B4
WF36G	3"	3"
WF42G	3"	3"
WF50G	3"	3"
WF58G	3"	3"
WF66G	4 1/2"	3 1/2"
WF74G	4 1/2"	4"
WF83G	4 1/2"	4 1/2"
WF95G	4 1/2"	5"
WF100G	5"	5 1/2"

NOTE TO DESIGNER

Replace B3 and B4 with appropriate values. Provide 3" min. oak block height at  $\phi$  girder.

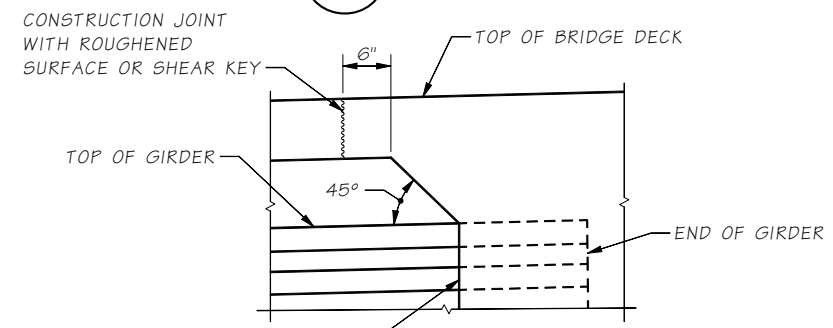


OAK BLOCK DETAIL



SECTION A

NOTE TO DESIGNER  
1'-0" (TYP.)  
6" for sdc A&B  
1'-0" for sdc C&D



DETAIL 1

NOTE TO DESIGNER  
Actual dimensions and bar sizes shall be determined by the designer.

NOTE TO DETAILER:  
Revise Details to show actual Geometry

Bridge Design Engr.	M:\STANDARDS\Girders\WF\DIAPHRAGM INTERMEDIATE PIER DETS.MAN				REGION NO.	STATE	FED. AID PROJ. NO.	SHEET NO.	TOTAL SHEETS
Supervisor		10	WASH.						
Designed By		JOB NUMBER							
Checked By									
Detailed By									
Bridge Projects Engr.									
Prelim. Plan By									
Architect/Specialist	DATE	REVISION	BY	APPD.					

Thu Mar 05 08:46:58 2015

BRIDGE AND STRUCTURES OFFICE



STANDARD PRESTRESSED CONCRETE GIRDERS  
DIAPHRAGM AT INTERMEDIATE PIER DETAILS

BRIDGE SHEET NO.  
SHEET  
OF  
SHEETS