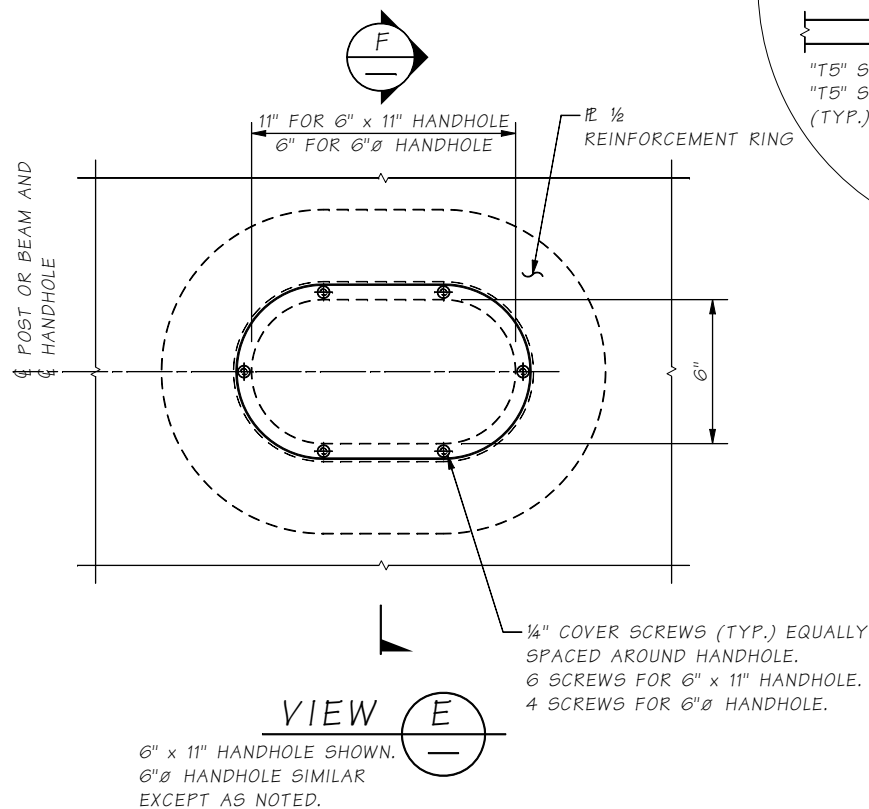
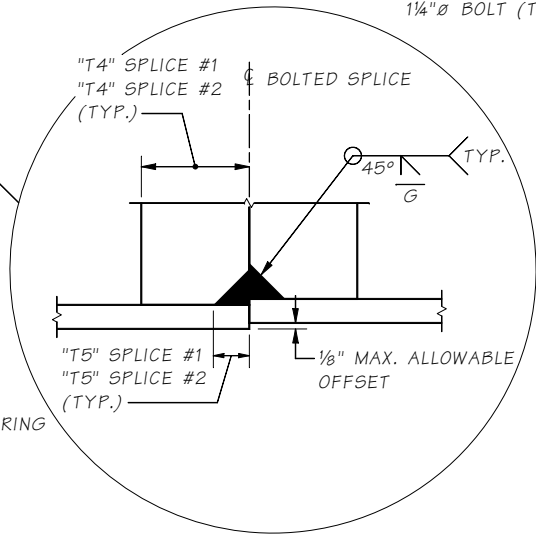
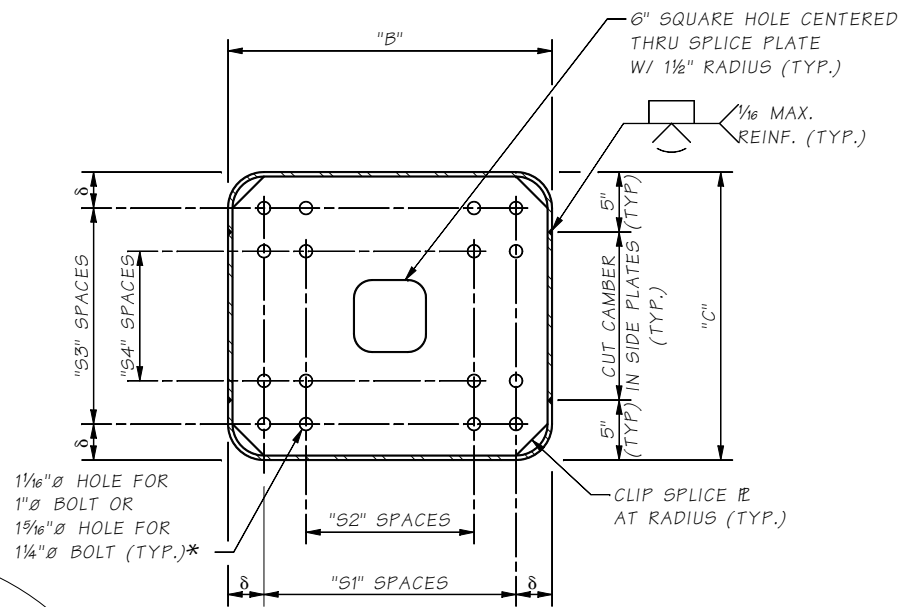


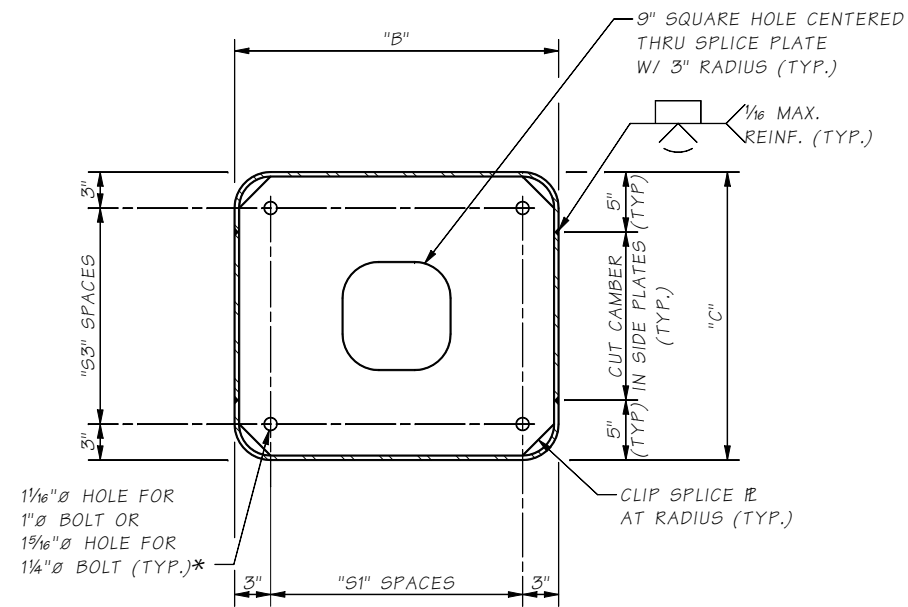
**DETAIL 3**  
SECTION THROUGH BEAM AT BOLTED SPLICE #2. BOLTED SPLICE #1 SIMILAR. 10.1-A1-1



**VIEW E**  
6" x 11" HANDHOLE SHOWN. 6" Ø HANDHOLE SIMILAR EXCEPT AS NOTED.



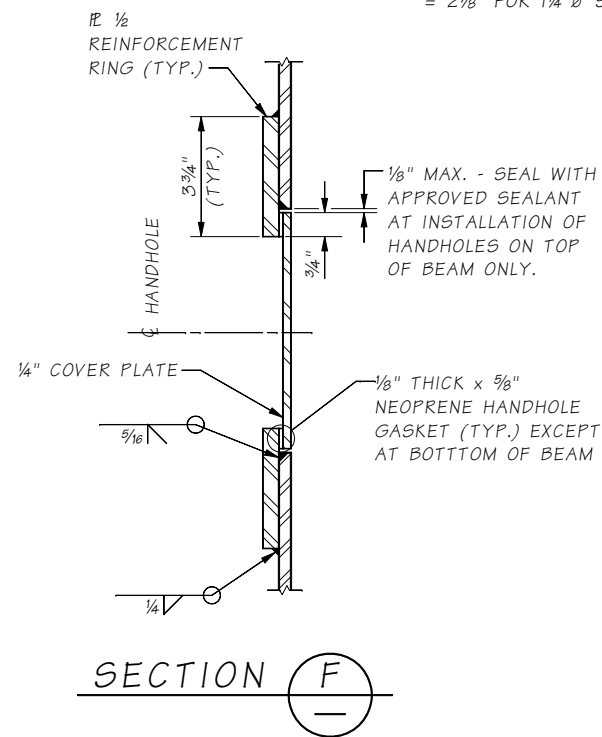
**SECTION D**  
BOLTED SPLICE #2 DETAIL



**SECTION D**  
BOLTED SPLICE #1 DETAIL

designer to delete non-applicable details

- \* 1" Ø SPLICE BOLT (TYP. UP TO 120'-0" SPANS)
- 1 1/4" Ø SPLICE BOLT (TYP. 120' - 180' SPANS)
- δ = 3" FOR 1" Ø SPLICE BOLT
- = 2 7/8" FOR 1 1/4" Ø SPLICE BOLT



**SECTION F**

Last revised on : 04/25/2019

10.1-A1-3 SR JOB NO. SHEET

Bridge Design Engr.	M:\STANDARDS\Sign Bridges\MT_SIGN_BRIDGE_STRUCT_DETAILS_2.MAN					REGION NO.	STATE	FED. AID PROJ. NO.	SHEET NO.	TOTAL SHEETS
Supervisor						10	WASH.			
Designed By						JOB NUMBER				
Checked By										
Detailed By										
Bridge Projects Engr.										
Prelim. Plan By										
Architect/Specialist	DATE	REVISION	BY	APP'D						

Thu Apr 25 09:25:08 2019

**BRIDGE AND STRUCTURES OFFICE**



**STANDARD MONOTUBE SIGN STRUCTURES**

MONOTUBE SIGN BRIDGE STRUCTURAL DETAILS 2

BRIDGE SHEET NO.  
SHEET  
OF  
SHEETS