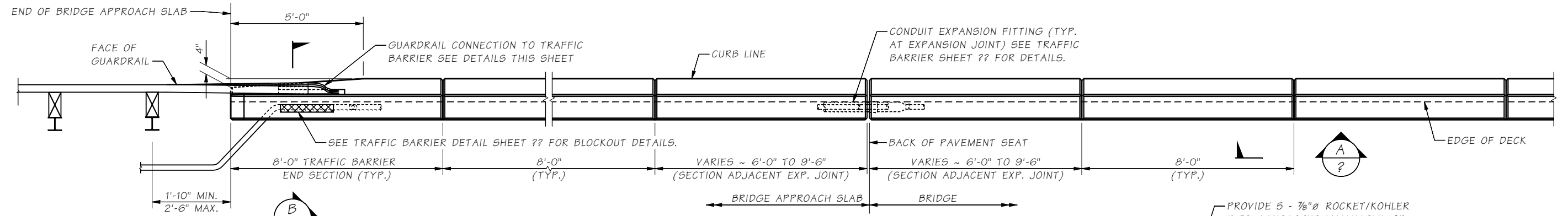


Last revised on : 6/5/2018

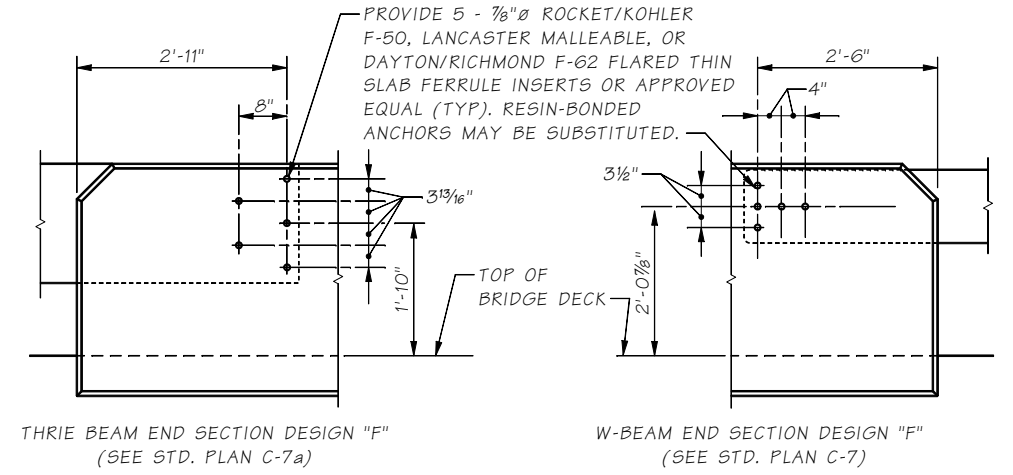
SR JOB NO. SHEET 1

10.2-A1-1



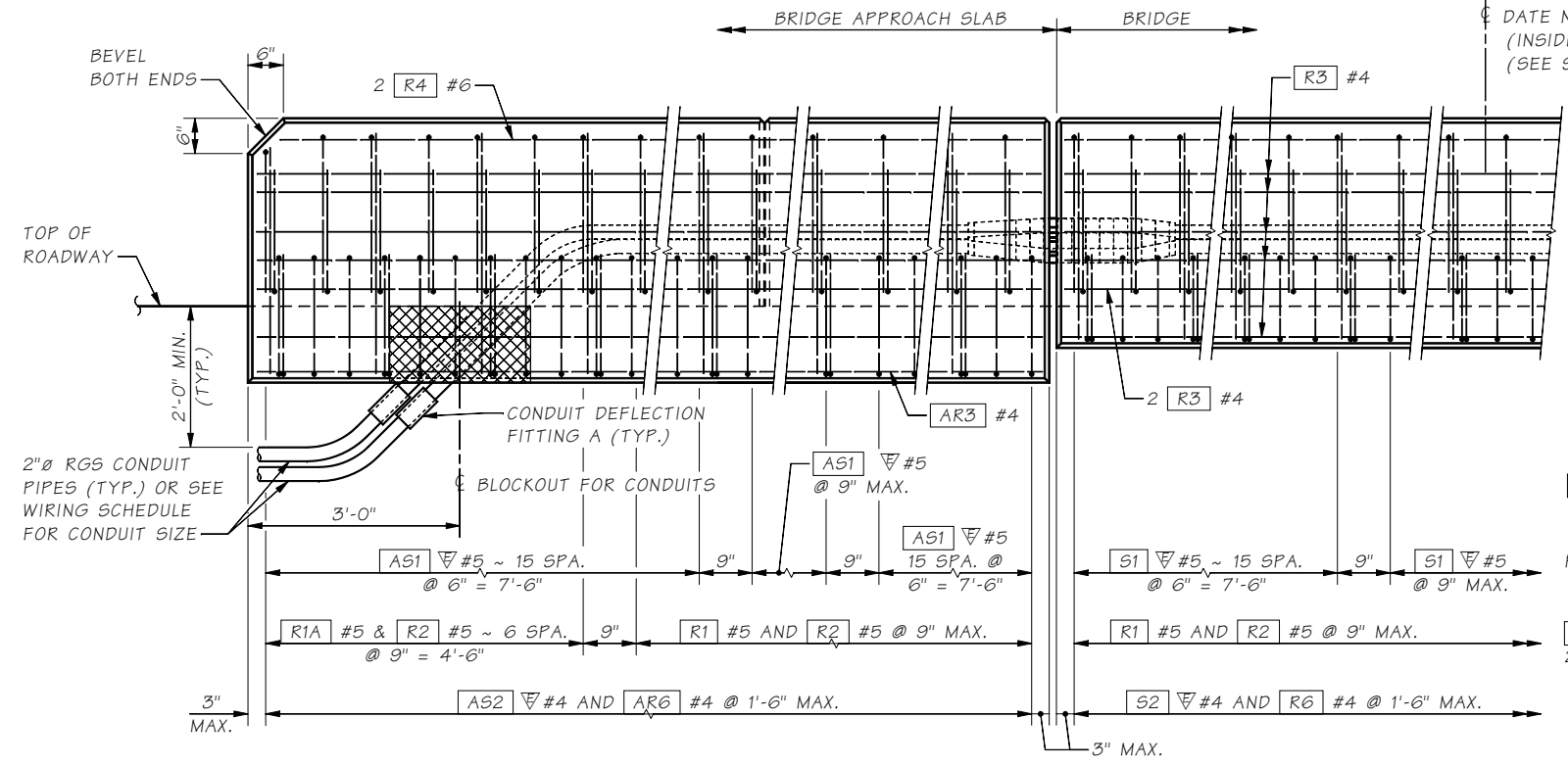
PLAN TRAFFIC BARRIER

BARRIER CONTINUOUS BETWEEN BRIDGE DECK EXPANSION JOINTS. CONSTRUCTION JOINTS WITH SHEAR KEYS ARE PERMISSIBLE AT DUMMY JOINT LOCATIONS. FORM JOINTS BETWEEN DUMMY JOINTS SHALL NOT BE PERMITTED.

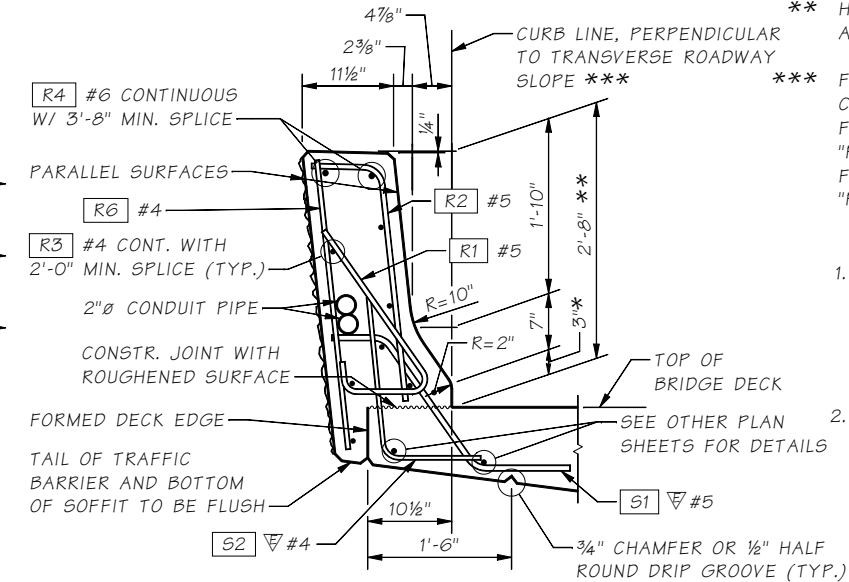


OUTSIDE ELEVATION TRAFFIC BARRIER - GUARDRAIL CONNECTION
(WHERE SHOWN ON LAYOUT)

- * TOE HEIGHT MAY VARY, 2" MIN. TO 6" MAX.
- ** HEIGHT MAY VARY IF REQUIRED TO PROVIDE A PROFILE PLEASING TO THE EYE
- *** FOR TRANSVERSE BRIDGE DECK SLOPES GREATER THAN 8%, CHANGE THE NOTE TO THE FOLLOWING: "PERPENDICULAR TO 8% TRANSVERSE BRIDGE DECK SLOPE" FOR THE LOW SIDE OF THE BRIDGE OR MEDIAN BARRIER - "PERPENDICULAR TO TRANSVERSE BRIDGE DECK SLOPE" FOR THE HIGH SIDE OF THE BRIDGE BARRIER - "PERPENDICULAR TO TRANSVERSE BRIDGE DECK SLOPE"



OUTSIDE ELEVATION END OF TRAFFIC BARRIER
SHOWN WITH BRIDGE APPROACH SLAB.



TYPICAL SECTION TRAFFIC BARRIER
SHOWN ON BRIDGE

- NOTE TO DESIGNERS**
- If transverse bridge deck slope is greater than 8%, S1 and S2 bar bends need to be modified to account for the difference between the actual slope and 8% on the low side only of the bridge or median barrier. The barrier geometry needs to be checked also.
 - The non-applicable text should be removed from the actual bridge plans.
- NW REGION:**
TERMINATE EACH CONDUIT PIPE AT SEPARATE TYPE 1 JUNCTION BOXES OFF END OF BRIDGE AS SHOWN ON LAYOUT.

Bridge Design Engr.	M:\STANDARDS\Traffic Barriers\Shape F\SHAPE F BARRIER SHT 1.MAN				
Supervisor		REGION NO.	STATE	FED. AID PROJ. NO.	SHEET NO.
Designed By		10	WASH.		TOTAL SHEETS
Checked By		JOB NUMBER			
Detailed By					
Bridge Projects Engr.					
Prelim. Plan By					
Architect/Specialist	DATE	REVISION	BY	APPD	

BRIDGE AND STRUCTURES OFFICE



STANDARD TRAFFIC BARRIERS

TRAFFIC BARRIER - SHAPE F
DETAILS 1 OF 3

BRIDGE SHEET NO.
SHEET
OF
SHEETS