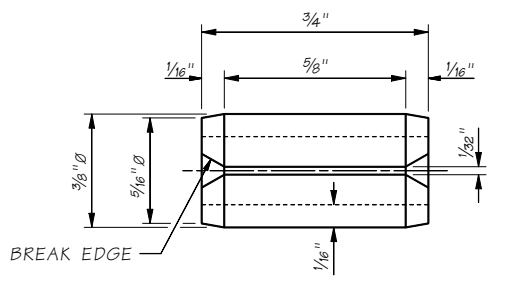
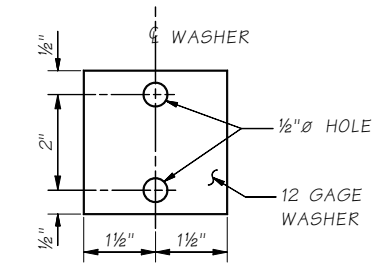


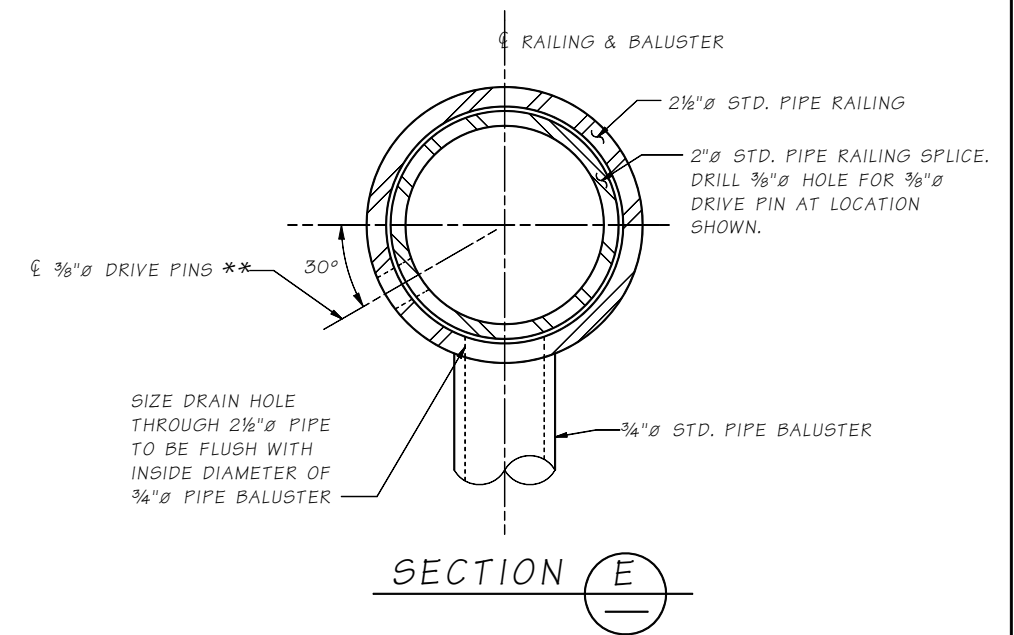
DETAIL C



DRIVE PIN DETAIL
SLOTTED TYPE SPRING PIN (ANSI B18.8.2)



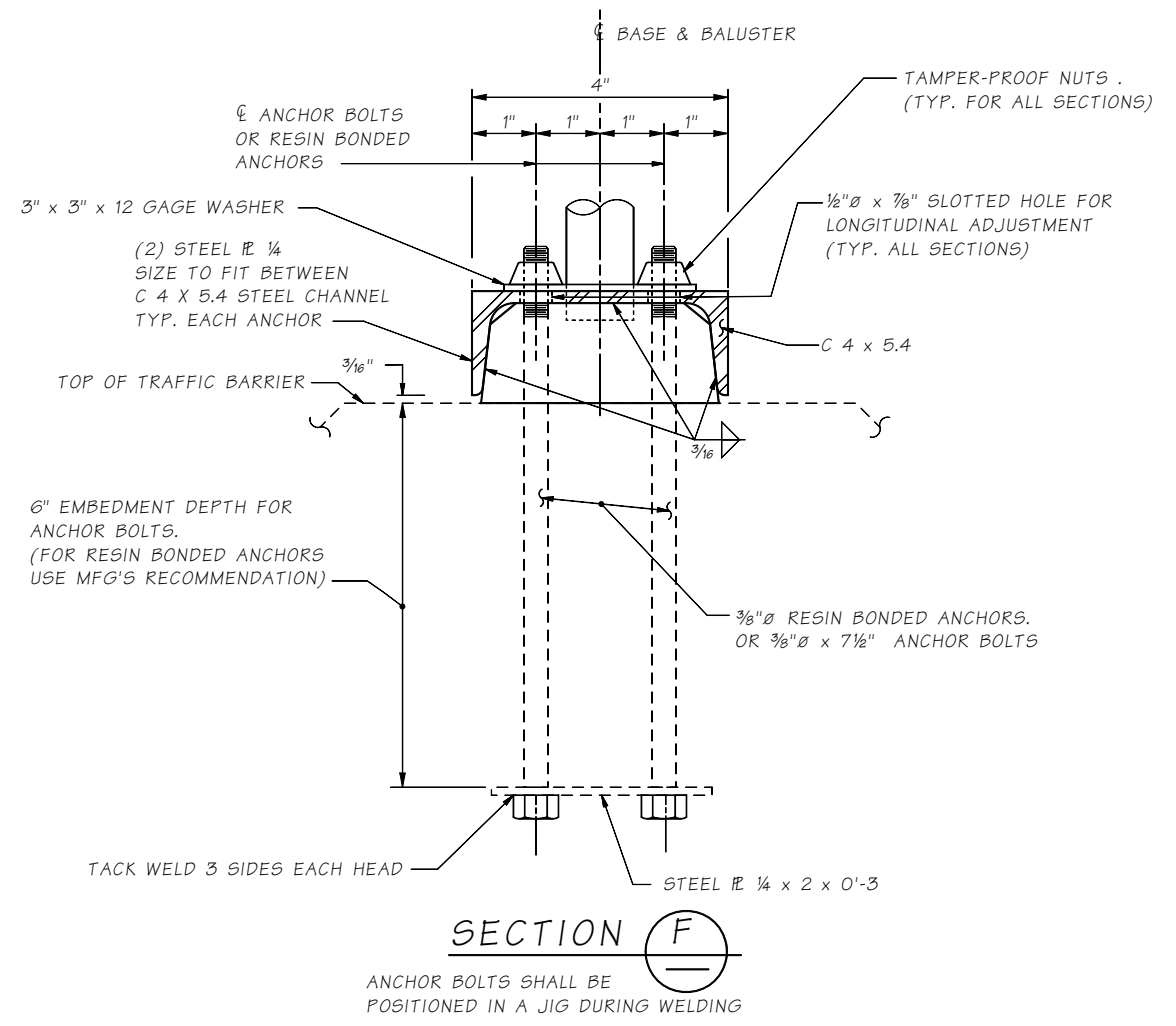
WASHER DETAIL
HOT DIP GALVANIZE AFTER FABRICATION



SECTION E

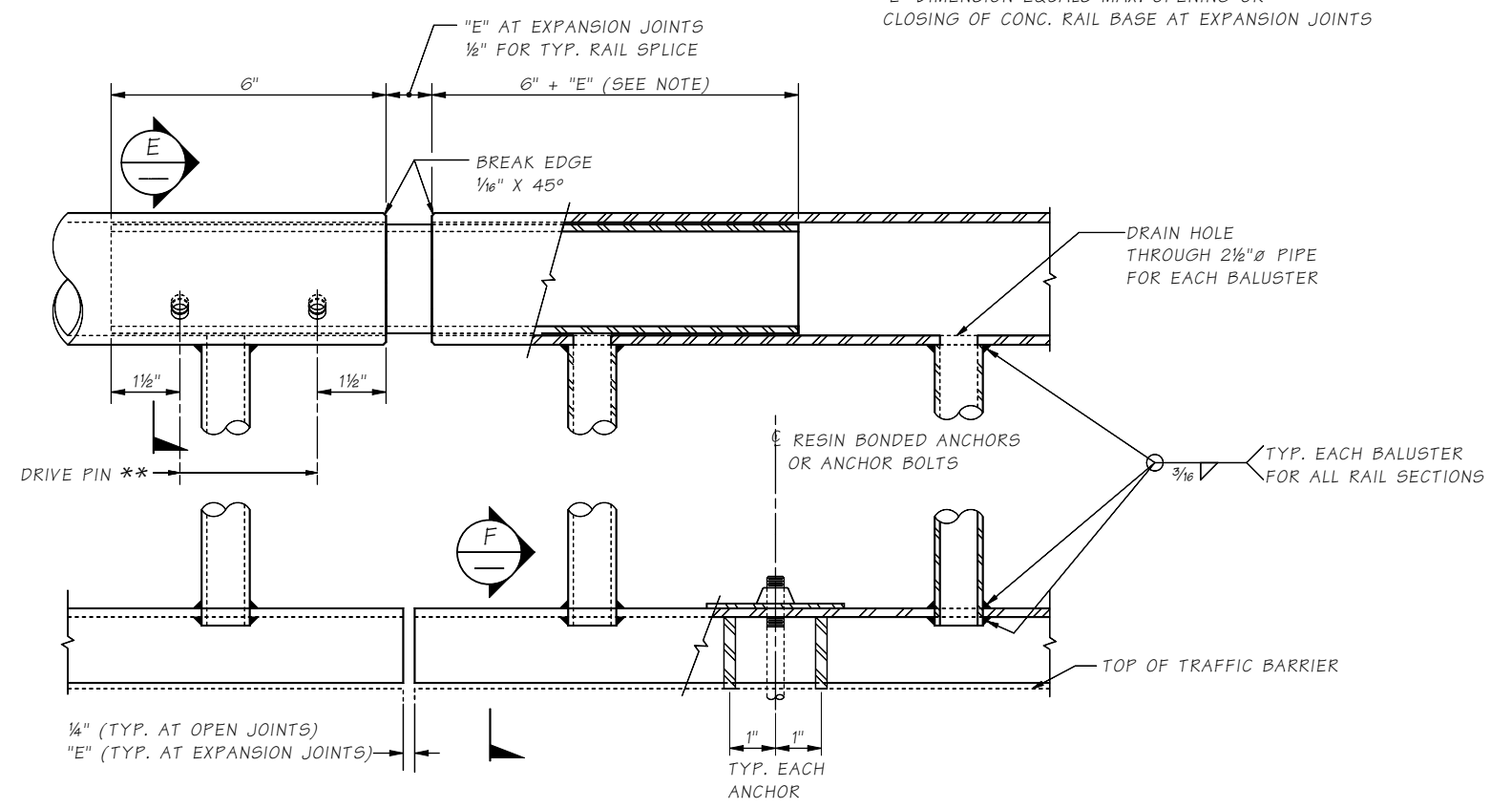
** LOCATE ON OPPOSITE SIDE OF TRAFFIC. DRIVE PINS SHALL BE DRIVEN FLUSH WITH THE OUTSIDE FACE OF THE RAILING

NOTE:
"E" DIMENSION EQUALS MAX. OPENING OR CLOSING OF CONC. RAIL BASE AT EXPANSION JOINTS



SECTION F

ANCHOR BOLTS SHALL BE POSITIONED IN A JIG DURING WELDING



PART ELEVATION B

Last revised on : 5/14/2014

JOB NO. 10.5-A3-2

Bridge Design Engr. Charles C. Ruth	M:\STANDARDS\BP Railing\STEEL RAILING BP-2.man		REGION NO.	STATE	FED. AID PROJ. NO.	SHEET NO.	TOTAL SHEETS
Supervisor			10	WASH.			
Designed By			JOB NUMBER				
Checked By							
Detailed By							
Bridge Projects Engr.							
Prelim. Plan By							
Architect/Specialist	DATE	REVISION	BY	APP'D			

BRIDGE AND STRUCTURES OFFICE		STANDARD RAILINGS	BRIDGE SHEET NO.
		BRIDGE RAILING TYPE S-BP DETAILS 2 OF 2	