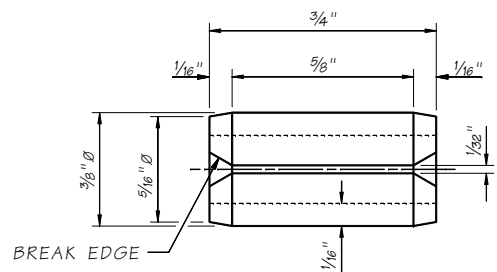
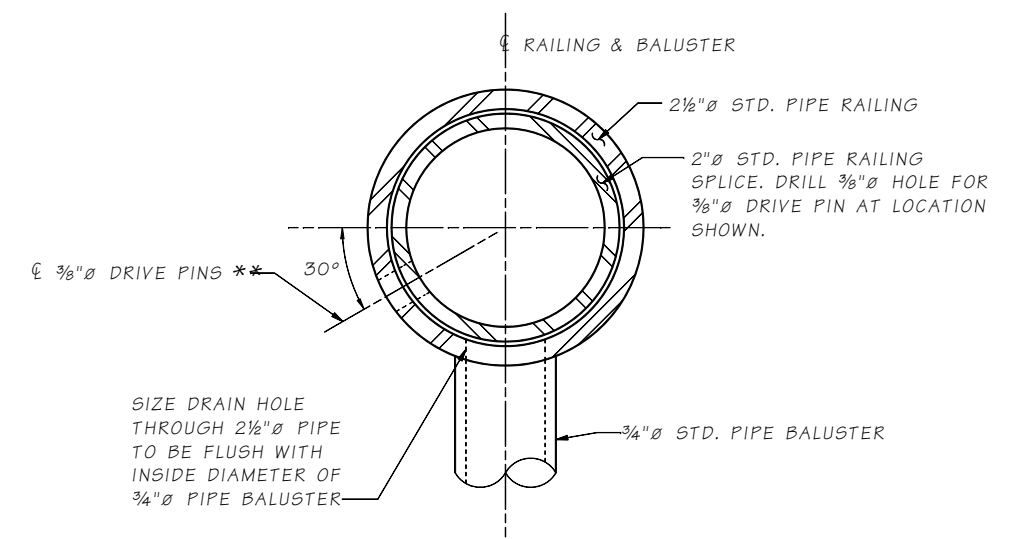


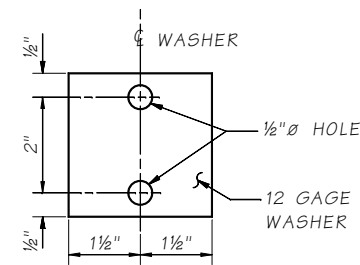
DETAIL 1



DRIVE PIN DETAIL
SLOTTED TYPE SPRING PIN (ANSI B18.8.2)



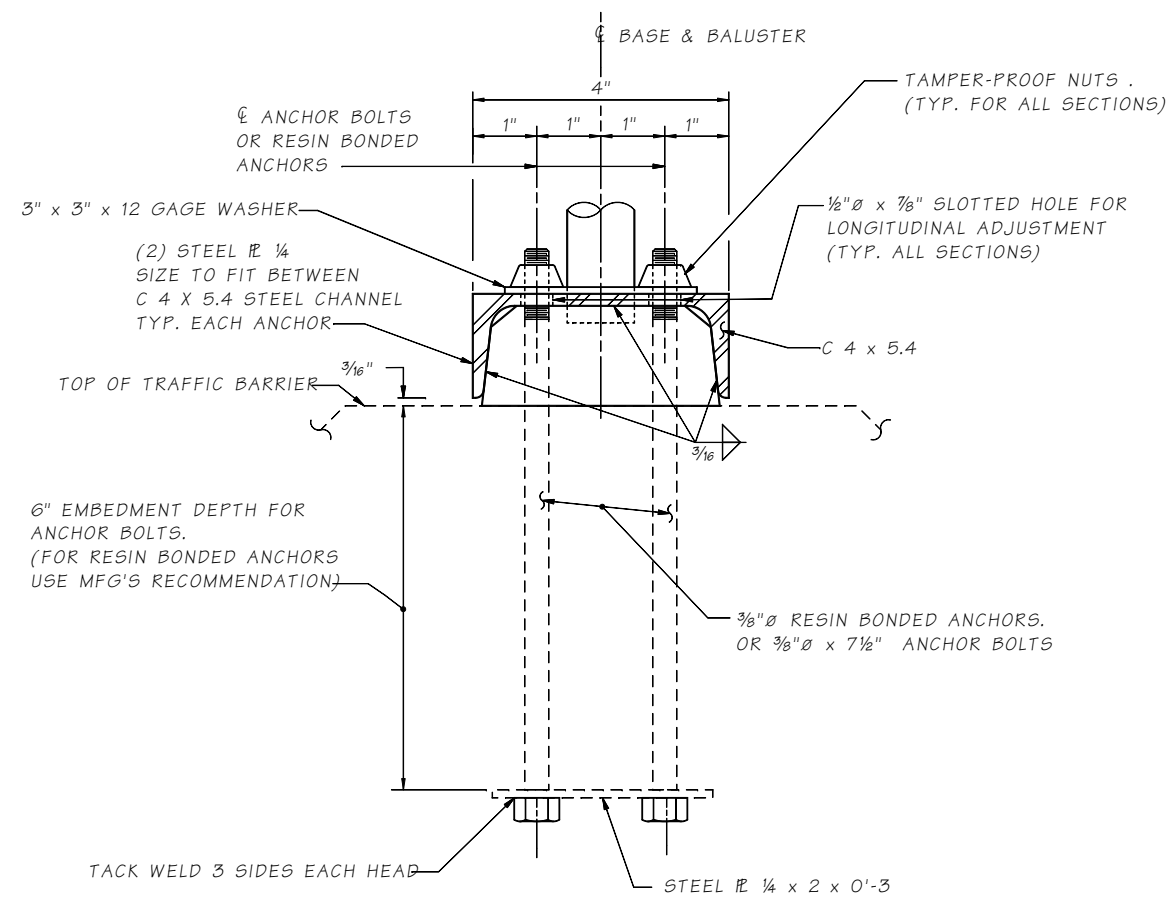
SECTION E



WASHER DETAIL
HOT DIP GALVANIZE AFTER FABRICATION

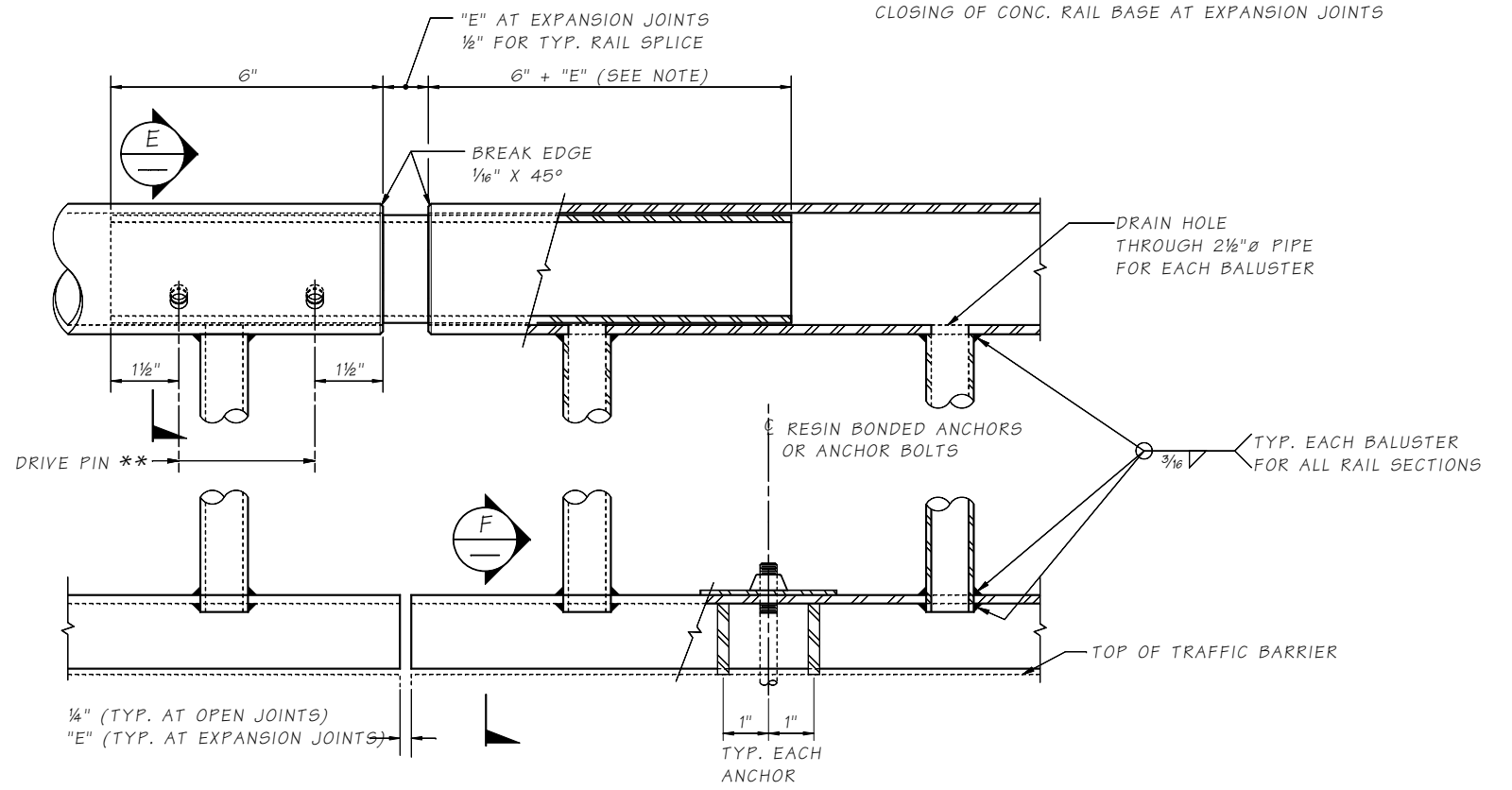
** LOCATE ON OPPOSITE SIDE OF TRAFFIC. DRIVE PINS SHALL BE DRIVEN FLUSH WITH THE OUTSIDE FACE OF THE RAILING

NOTE:
"E" DIMENSION EQUALS MAX. OPENING OR CLOSING OF CONC. RAIL BASE AT EXPANSION JOINTS



SECTION F

ANCHOR BOLTS SHALL BE POSITIONED IN A JIG DURING WELDING



PART ELEVATION B

Last revised on : 6/14/2018

SHEET

JOB NO. SR

10.5-A7-2

Bridge Design Engr.	M:\STANDARDS\BP Rail\10.5-A7-2 BRIDGE RAILING TYPE S-BP-12 DET 2 OF 2.MAN						
Supervisor			REGION NO.	STATE	FED. AID PROJ. NO.	SHEET NO.	TOTAL SHEETS
Designed By			10	WASH.			
Checked By			JOB NUMBER				
Detailed By							
Bridge Projects Engr.							
Prelim. Plan By							
Architect/Specialist	DATE	REVISION	BY	APPD			

BRIDGE AND STRUCTURES OFFICE



STANDARD RAILINGS
BRIDGE RAILING TYPE S-BP-12
DETAILS 2 OF 2

BRIDGE SHEET NO.
SHEET
OF
SHEETS