

EXISTING EB BRIDGE ELEVATIONS

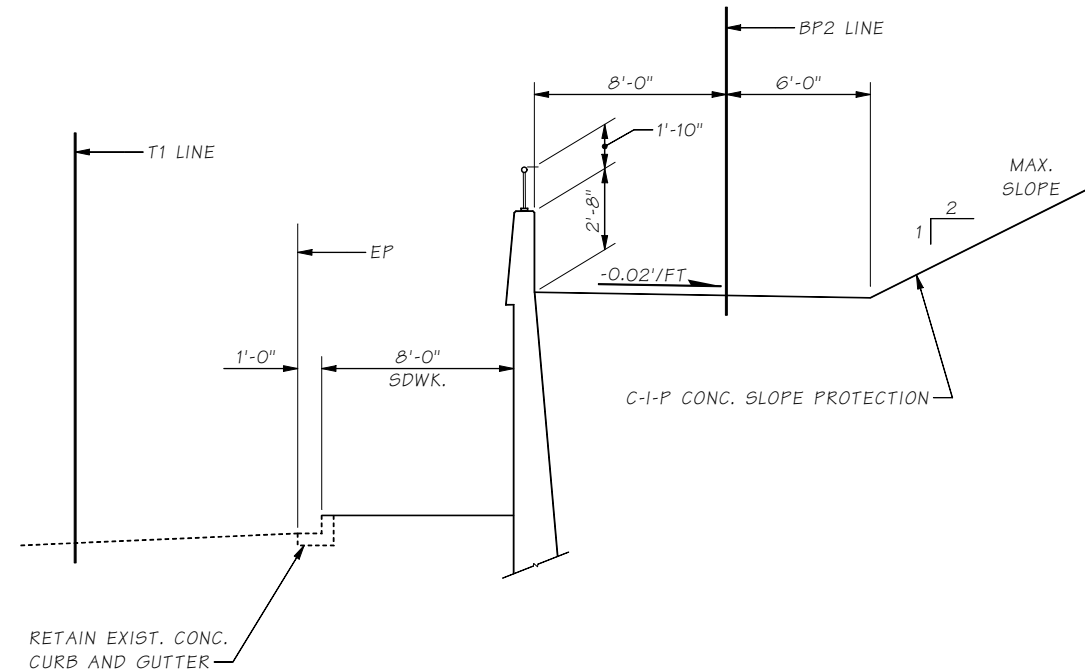
OFFSETS MEASURED IN FEET.

| A22 STA. | LT. OFFSET | ELEVATION | LT. OFFSET | ELEVATION |
|----------|------------|-----------|------------|-----------|
| 75+98.05 | | | 57.84 | 343.56 |
| 76+00.00 | | | 57.85 | 343.57 |
| 76+07.79 | 17.85 | 344.40 | | |
| 76+10.00 | 17.85 | 344.41 | 57.87 | 343.64 |
| 76+20.00 | 17.88 | 344.45 | 57.89 | 343.70 |
| 76+30.00 | 17.91 | 344.50 | 57.87 | 343.75 |
| 76+40.00 | 17.92 | 344.55 | 57.85 | 343.79 |
| 76+50.00 | 17.91 | 344.61 | 57.83 | 343.84 |
| 76+60.00 | 17.89 | 344.66 | 57.84 | 343.90 |
| 76+70.00 | 17.89 | 344.72 | 57.85 | 343.96 |
| 76+80.00 | 17.90 | 344.77 | 57.87 | 344.02 |
| 76+90.00 | 17.90 | 344.82 | 57.85 | 344.08 |
| 77+00.00 | 17.90 | 344.88 | 57.84 | 344.14 |
| 77+10.00 | 17.91 | 344.93 | 57.83 | 344.20 |
| 77+20.00 | 17.91 | 344.99 | 57.83 | 344.25 |
| 77+30.00 | 17.91 | 345.04 | 57.84 | 344.30 |
| 77+40.00 | 17.90 | 345.09 | 57.85 | 344.35 |
| 77+50.00 | 17.90 | 345.14 | 57.85 | 344.40 |
| 77+60.00 | 17.89 | 345.19 | 57.82 | 344.44 |
| 77+70.00 | 17.89 | 345.24 | 57.80 | 344.48 |
| 77+80.00 | 17.89 | 345.29 | 57.79 | 344.52 |
| 77+90.00 | 17.89 | 345.33 | 57.80 | 344.56 |
| 78+00.00 | 17.89 | 345.38 | 57.80 | 344.60 |
| 78+10.00 | 17.88 | 345.42 | 57.81 | 344.64 |
| 78+20.00 | 17.88 | 345.47 | 57.82 | 344.69 |
| 78+30.00 | 17.88 | 345.51 | 57.82 | 344.74 |
| 78+40.00 | 17.88 | 345.54 | 57.83 | 344.78 |
| 78+50.00 | 17.89 | 345.58 | 57.84 | 344.80 |
| 78+60.00 | 17.89 | 345.62 | 57.85 | 344.82 |
| 78+70.00 | 17.89 | 345.67 | 57.86 | 344.83 |
| 78+80.00 | 17.88 | 345.71 | 57.86 | 344.90 |
| 78+90.00 | 17.87 | 345.76 | 57.85 | 344.96 |
| 79+00.00 | 17.88 | 345.80 | 57.84 | 345.02 |
| 79+10.00 | 17.88 | 345.85 | 57.84 | 345.07 |
| 79+20.00 | 17.89 | 345.90 | 57.84 | 345.11 |
| 79+30.00 | 17.89 | 345.94 | 57.83 | 345.15 |
| 79+40.00 | 17.90 | 345.97 | 57.83 | 345.19 |
| 79+50.00 | 17.90 | 346.01 | 57.83 | 345.23 |
| 79+60.00 | 17.90 | 346.04 | 57.84 | 345.26 |
| 79+70.00 | 17.90 | 346.07 | 57.84 | 345.30 |
| 79+80.00 | 17.90 | 346.09 | 57.85 | 345.32 |
| 79+90.00 | 17.90 | 346.11 | 57.86 | 345.35 |
| 80+00.00 | 17.90 | 346.12 | 57.86 | 345.37 |
| 80+10.00 | 17.90 | 346.13 | 57.84 | 345.39 |
| 80+20.00 | 17.90 | 346.14 | 57.82 | 345.41 |
| 80+30.00 | 17.91 | 346.13 | 57.80 | 345.42 |
| 80+40.00 | 17.91 | 346.12 | 57.82 | 345.42 |
| 80+50.00 | 17.92 | 346.11 | 57.83 | 345.43 |
| 80+60.00 | 17.92 | 346.11 | 57.85 | 345.43 |
| 80+70.00 | 17.91 | 346.13 | 57.85 | 345.42 |
| 80+80.00 | 17.90 | 346.14 | 57.84 | 345.41 |
| 80+90.00 | 17.90 | 346.14 | 57.84 | 345.40 |
| 81+00.00 | 17.90 | 346.13 | 57.82 | 345.38 |
| 81+10.00 | 17.91 | 346.12 | 57.80 | 345.37 |
| 81+17.04 | 17.91 | 346.11 | | |
| 81+20.00 | | | 57.78 | 345.36 |
| 81+23.91 | | | 57.77 | 345.36 |

TYLER STREET ROADWAY ELEVATIONS

OFFSETS MEASURED IN FEET.

| T1 STA. | LT. OFFSET | ELEVATION | RT. OFFSET | ELEVATION | LT. OFFSET | ELEVATION | RT. OFFSET | ELEVATION |
|----------|------------|-----------|------------|-----------|------------|-----------|------------|-----------|
| 9+10.00 | 27.07 | 315.03 | 27.08 | 315.02 | 4.93 | 315.50 | 4.63 | 315.54 |
| 9+20.00 | 27.06 | 314.98 | 27.09 | 314.96 | 4.94 | 315.44 | 4.63 | 315.48 |
| 9+30.00 | 27.05 | 314.93 | 27.10 | 314.90 | 4.94 | 315.37 | 4.63 | 315.42 |
| 9+40.00 | 27.05 | 314.88 | 27.12 | 314.86 | 4.94 | 315.33 | 4.65 | 315.38 |
| 9+50.00 | 27.05 | 314.83 | 27.13 | 314.84 | 4.93 | 315.32 | 4.71 | 315.37 |
| 9+60.00 | 27.04 | 314.78 | 27.15 | 314.82 | 4.92 | 315.30 | 4.76 | 315.36 |
| 9+70.00 | 27.04 | 314.74 | 27.16 | 314.79 | 4.91 | 315.29 | 4.82 | 315.35 |
| 9+80.00 | 27.04 | 314.69 | 27.18 | 314.77 | 4.90 | 315.27 | 4.88 | 315.34 |
| 9+90.00 | 27.04 | 314.65 | 27.20 | 314.75 | 4.90 | 315.26 | 4.93 | 315.33 |
| 9+95.84 | 27.01 | 314.52 | | | - | - | - | - |
| 9+97.75 | 27.01 | 314.49 | | | - | - | - | - |
| 10+00.00 | 27.15 | 314.53 | 27.21 | 314.73 | 4.93 | 315.25 | 4.97 | 315.32 |
| 10+10.00 | 27.81 | 314.61 | 27.20 | 314.77 | 4.98 | 315.26 | 4.95 | 315.35 |
| 10+20.00 | 28.36 | 314.64 | 27.22 | 314.80 | 4.96 | 315.29 | 4.92 | 315.38 |
| 10+30.00 | 28.91 | 314.68 | 27.24 | 314.83 | 4.93 | 315.33 | 4.90 | 315.41 |
| 10+40.00 | 29.47 | 314.71 | 27.25 | 314.87 | 4.90 | 315.36 | 4.88 | 315.44 |
| 10+50.00 | 30.02 | 314.74 | 27.27 | 314.90 | 4.88 | 315.40 | 4.85 | 315.46 |
| 10+60.00 | 30.58 | 314.77 | 27.28 | 314.93 | 4.85 | 315.44 | 4.83 | 315.50 |
| 10+70.00 | 31.13 | 314.80 | 27.26 | 314.99 | 4.82 | 315.47 | 4.83 | 315.54 |
| 10+80.00 | 31.68 | 314.86 | 27.23 | 315.04 | 4.82 | 315.52 | 4.83 | 315.59 |
| 10+90.00 | 32.22 | 314.91 | 27.20 | 315.10 | 4.84 | 315.57 | 4.83 | 315.64 |
| 11+00.00 | 32.77 | 314.97 | 27.17 | 315.15 | 4.85 | 315.62 | 4.82 | 315.69 |
| 11+10.00 | 33.32 | 315.02 | 27.15 | 315.21 | 4.86 | 315.67 | 4.82 | 315.74 |
| 11+20.00 | 33.86 | 315.08 | 27.15 | 315.26 | 4.88 | 315.72 | 4.82 | 315.80 |
| 11+30.00 | 34.41 | 315.13 | 27.16 | 315.32 | 4.89 | 315.78 | 4.80 | 315.88 |
| 11+40.00 | 34.94 | 315.18 | 27.16 | 315.37 | 4.89 | 315.85 | 4.79 | 315.97 |



BP2 LINE UNDER EB BRIDGE (16/20W)

LAST REVISION: 12/11/2016

SR JOB NO. SHEET 2-B-2

| | | | | | |
|-----------------------|--|------------|--------------------|-----------|--------------|
| Bridge Design Engr. | M:\BRIDGELIB\BDM\Chapter 2\window files\S2B9.wnd | STATE | FED. AID PROJ. NO. | SHEET NO. | TOTAL SHEETS |
| Supervisor | | 10 | WASH. | | |
| Designed By | | JOB NUMBER | | | |
| Checked By | | | | | |
| Detailed By | | | | | |
| Bridge Projects Engr. | | | | | |
| Prelim. Plan By | | | | | |
| Architect/Specialist | DATE | REVISION | BY | APP'D | |

BRIDGE AND STRUCTURES OFFICE



C.S. 2704 ~ PROJ. NO. XL1200 ~ OLYMPIC REGION ~ SR 16 ~ UNION AVE. TO PEARL ST. ~ SNAKE LAKE NORTH BRIDGE NO. 16/20W WIDENING