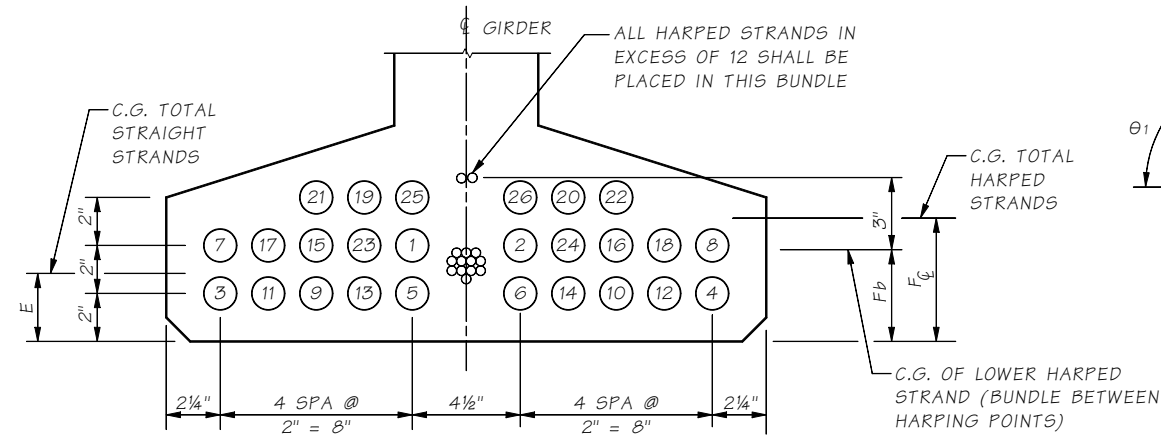


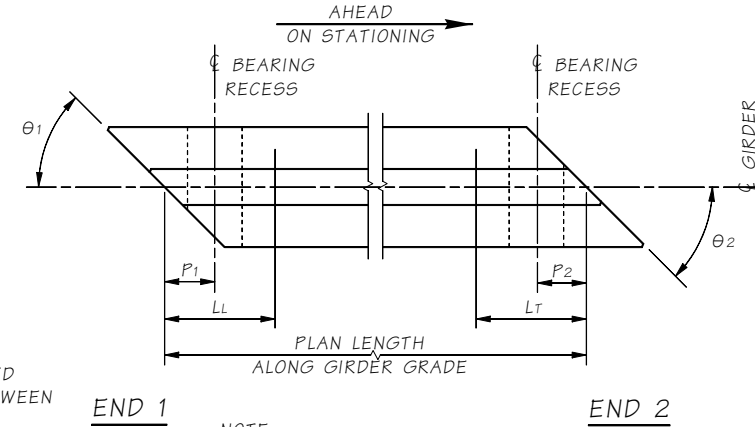
STRAND PATTERN AT GIRDER END

HARPED STRAND LOCATION SEQUENCE SHALL BE AS SHOWN (1), (2) ETC.



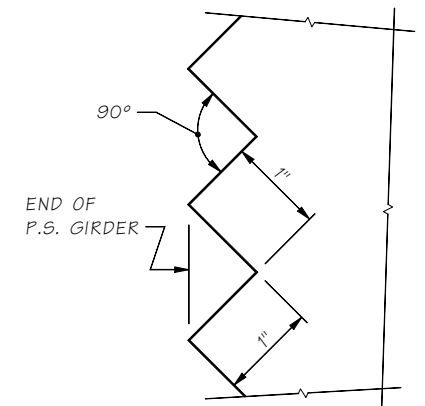
STRAND PATTERN AT ϕ SPAN

STRAIGHT STRAND LOCATION SEQUENCE SHALL BE AS SHOWN (1), (2) ETC.



NOTE: LL AND LT ARE SHIPPING SUPPORT LOCATIONS AT LEADING AND TRAILING ENDS, RESPECTIVELY.

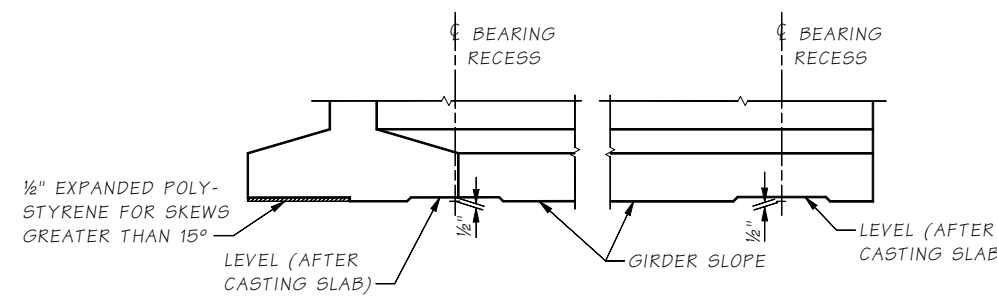
GIRDER SCHEDULE



SAWTOOTH DETAILS

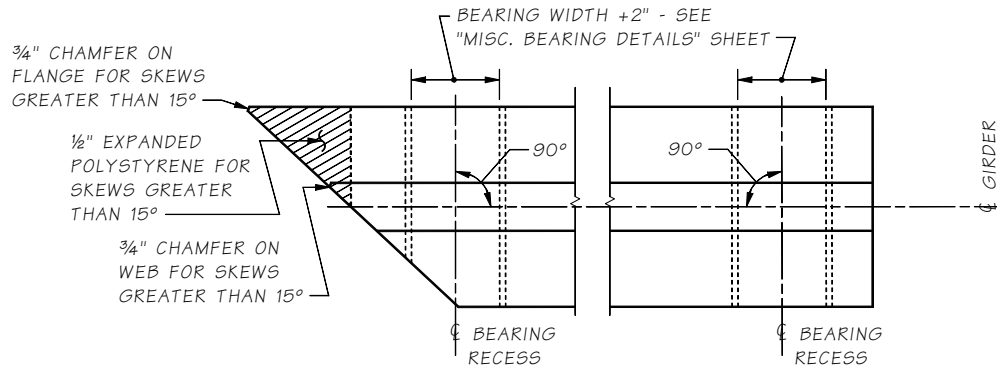
SAWTEETH ARE FULL WIDTH - USE SAWTOOTH KEYS FROM BOTTOM OF BOTTOM FLANGE TO BOTTOM OF LOWEST HARPED STRAND AS WELL AS TOP FLANGE ADJACENT TO HARPED STRANDS AS SHOWN IN VIEW B - GIRDER DETAILS 1 OF 2

SPAN	GIRDER	DIMENSION "A" AT ϕ BEARINGS =										BASED ON GIRDER DEFLECTION = "D" AT TIME OF SLAB PLACEMENT (120 DAYS)														
		END 1 TYPE	END 2 TYPE	L	LL	LT	θ_1 (DEG.)	θ_2 (DEG.)	P1	P2	PLAN LENGTH (ALONG GIRDER GRADE)	MIN. CONC. COMP. STRENGTH		HARPED		STRAIGHT		LOCATION OF C.G. STRANDS				C	D @ 40 DAYS	D @ 120 DAYS	Ld	
												@ FINAL F'C (KSI)	@ RELEASE F'C (KSI)	NO. OF STRANDS	JACKING FORCE (KIPS)	NO. OF STRANDS	JACKING FORCE (KIPS)	E	F ϕ	Fb	Fo					
-	-	-	-	-	-	-	-	-	-	-	-	-	-	-	-	-	-	-	-	-	-	-	-	-	-	-

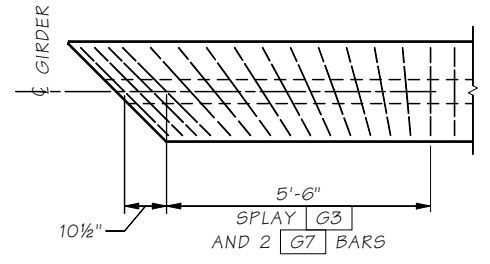


ELEVATION

NOTE: Dimensions shall be shown in Imperial units to the nearest 1/8th inch. The number of harped strands should not exceed 1/2 of the number of straight strands.

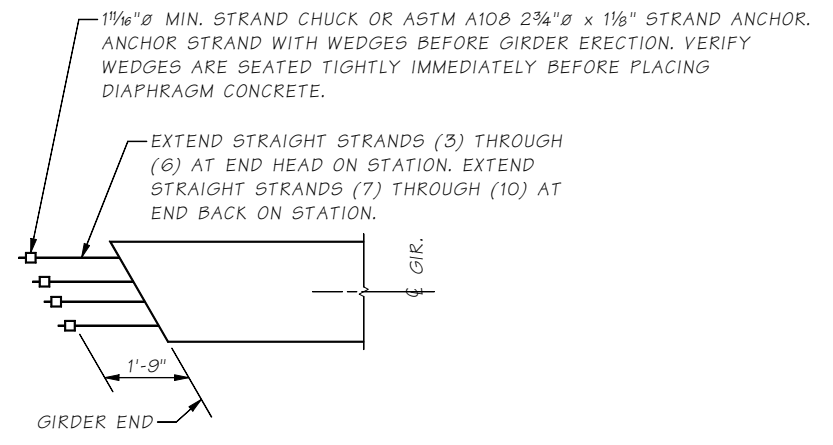


PLAN BEARING RECESS AND BOTTOM FLANGE SPALL PROTECTION



TRANSVERSE REINFORCING SKEWED ENDS

ONLY TRANSVERSE REINF. SHOWN



STRAND EXTENSION DETAIL

Number of extended strands shall be determined by the designer.

Last revised: 03/20/19

SR JOB NO. 5.0-A3-4 SHEET

Bridge Design Engr.	M:\STANDARDS\Girders\W1W50G\W50G2.man	REGION NO.	STATE	FED. AID PROJ. NO.	SHEET NO.	TOTAL SHEETS
Supervisor		10	WASH.			
Designed By		JOB NUMBER				
Checked By						
Detailed By						
Bridge Projects Engr.						
Prelim. Plan By						
Architect/Specialist	DATE	REVISION	BY	APPD		

BRIDGE AND STRUCTURES OFFICE



STANDARD PRESTRESSED CONCRETE GIRDERS
W50G GIRDER
DETAILS 2 OF 2