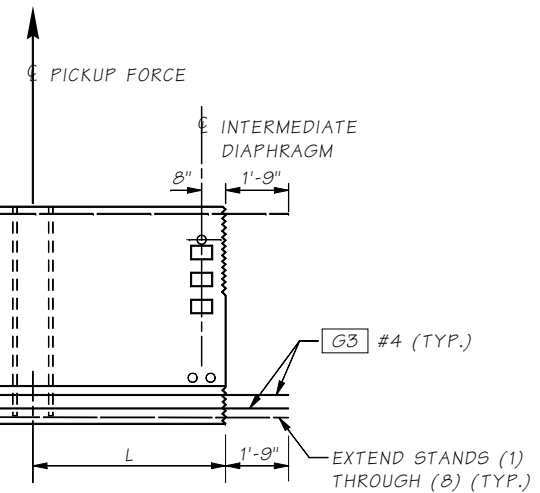
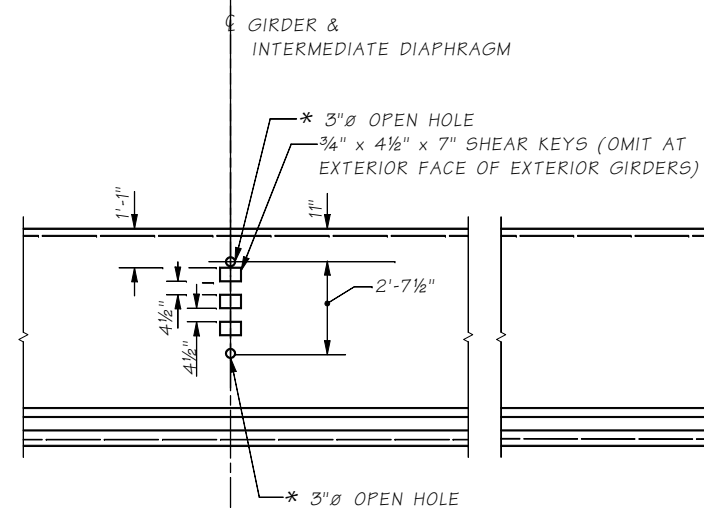
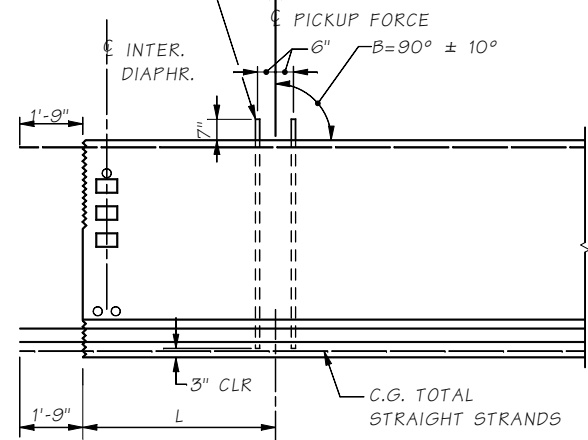
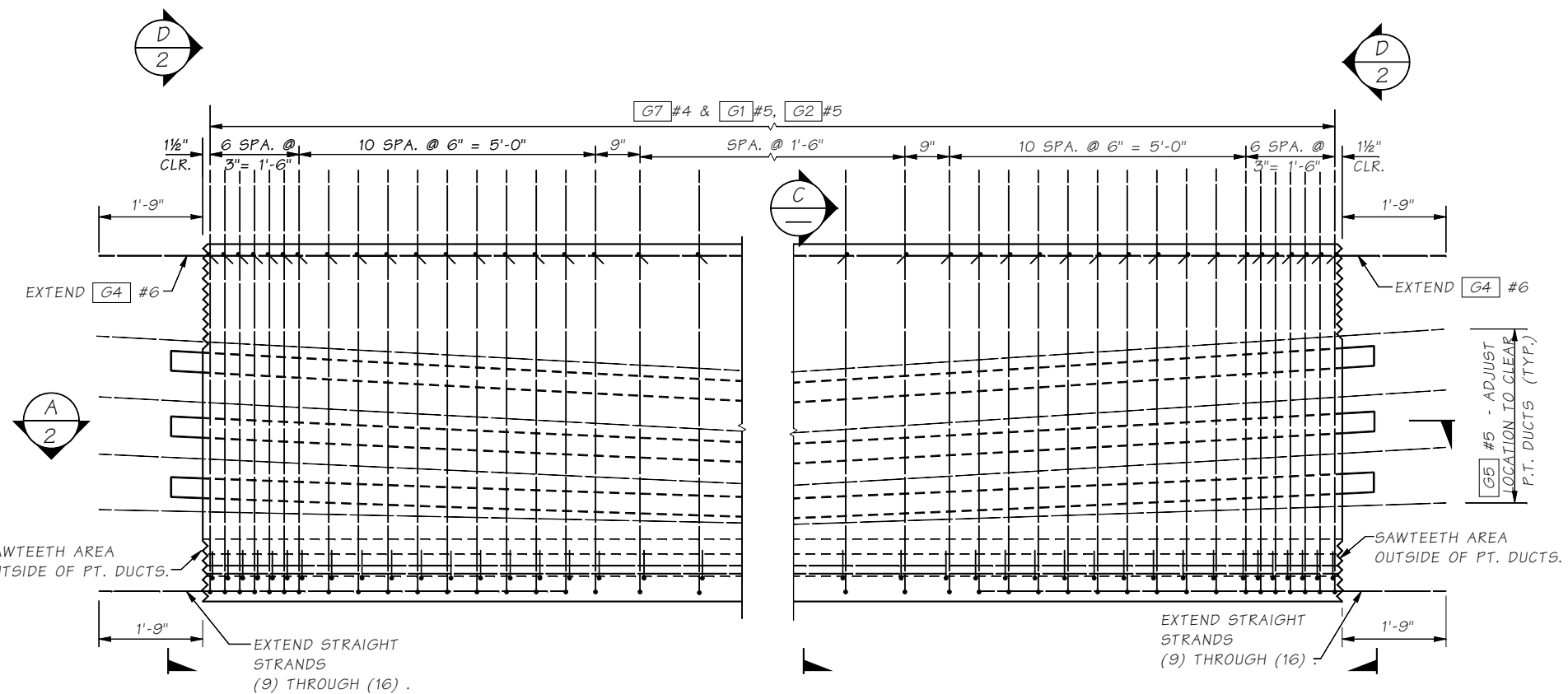


LIFTING BARS 2 ~ 1 1/8" Ø H.S. THREAD BARS W/ANCHOR NUT AT BOTTOM



GIRDER ELEVATION ~ MID-SEGMENT

* OMIT HOLES AND PLACE INSERTS ON THE INTERIOR FACE OF EXTERIOR WEB. PLACE HOLES AND INSERTS PARALLEL TO SKEW. INSERTS SHALL BE 1"Ø MEADOWBURKE MX-3 HI-TENSILE, 1"Ø MEADOWBURKE FX-19 FERRULE INSERT, 1"Ø x 5 1/2" WILLIAMS F22 OPEN FERRULE INSERT, 1"Ø x 4 3/8" DAYTON-SUPERIOR F-62 FLARED THIN SLAB FERRULE INSERT OR APPROVED EQUAL.



TYPICAL MID-SEGMENT ELEVATION

Last revised: 5/23/16

SHEET

5.9-A4-5

Bridge Design Engr.	M:\STANDARDS\Girders\PT Trapezoidal Tubs\PT_TRAPEZOIDAL TUB 4.MAN					REGION NO.	STATE	FED. AID PROJ. NO.	SHEET NO.	TOTAL SHEETS
Supervisor						10	WASH.			
Designed By						JOB NUMBER				
Checked By										
Detailed By										
Bridge Projects Engr.										
Prelim. Plan By										
Architect/Specialist	DATE	REVISION	BY	APPD						

Wed May 25 09:02:39 2016

BRIDGE AND STRUCTURES OFFICE



STANDARD PRESTRESSED CONCRETE GIRDERS

TUB SPLICED GIRDER DETAILS 4 OF 5

BRIDGE SHEET NO.
SHEET
OF
SHEETS