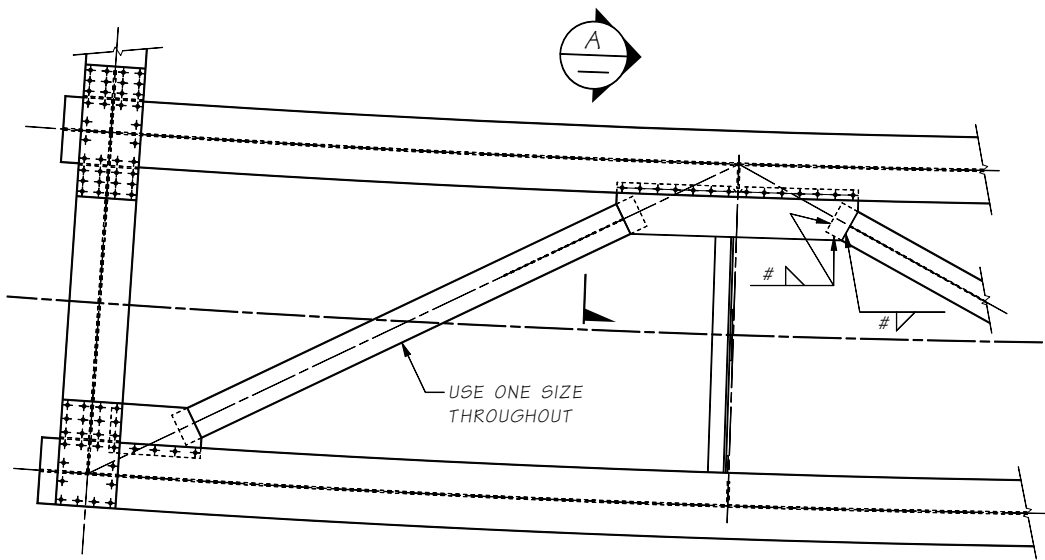


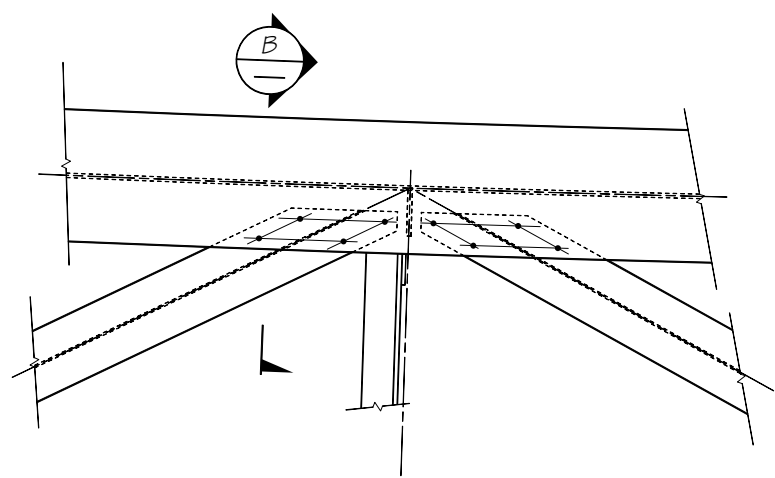
LAST REVISED 12-11-2014

SHEET NO. 0.4-A11



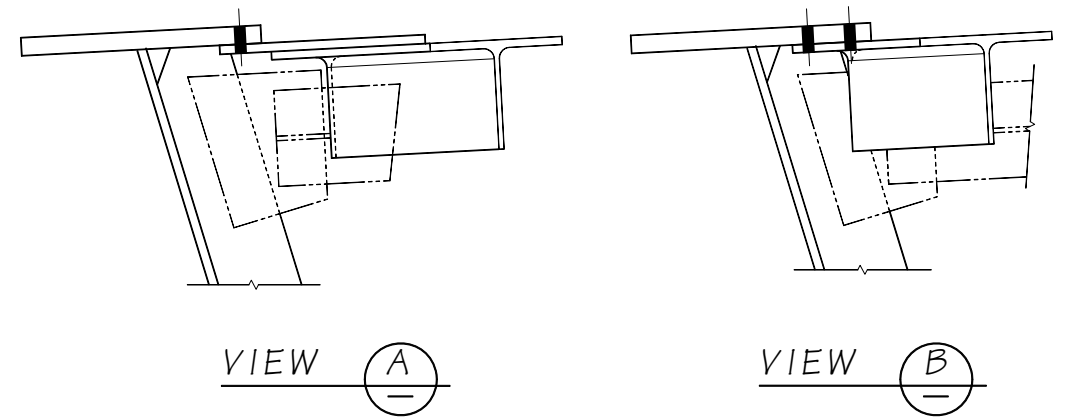
PLAN - EXAMPLE TOP LATERAL DETAILS

CONNECT LATERALS TO BOTTOM SIDE OF TOP FLANGE
USE BOLTED GUSSET PLATE OR BOLT DIRECTLY TO FLANGE
SIZE OF LATERALS AND CONNECTIONS WILL DEPEND ON LOADS



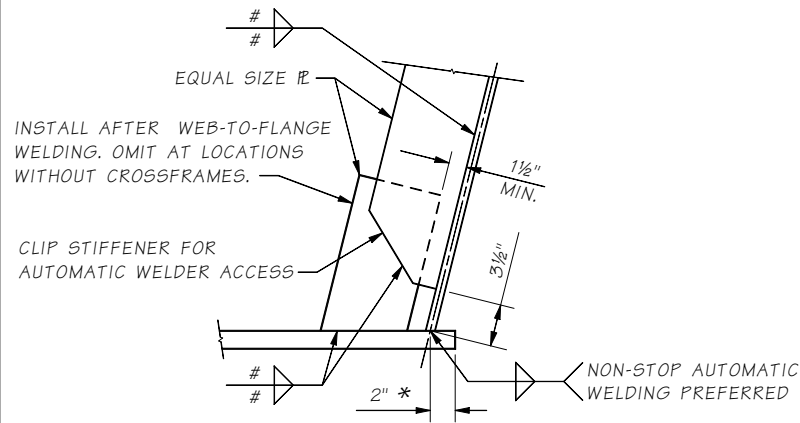
DETAIL SHOWING DIRECT BOLTING

PREFERRED ALTERNATIVE WHERE SPACE AND LOADING PERMITS.
MAY REQUIRE THE USE OF 1"Ø ASTM A490 BOLTS, DO NOT WELD.
VERIFY FLANGE STRESSES IN THE VICINITY OF BOLT HOLES ARE WITHIN ALLOWABLE



VIEW A

VIEW B

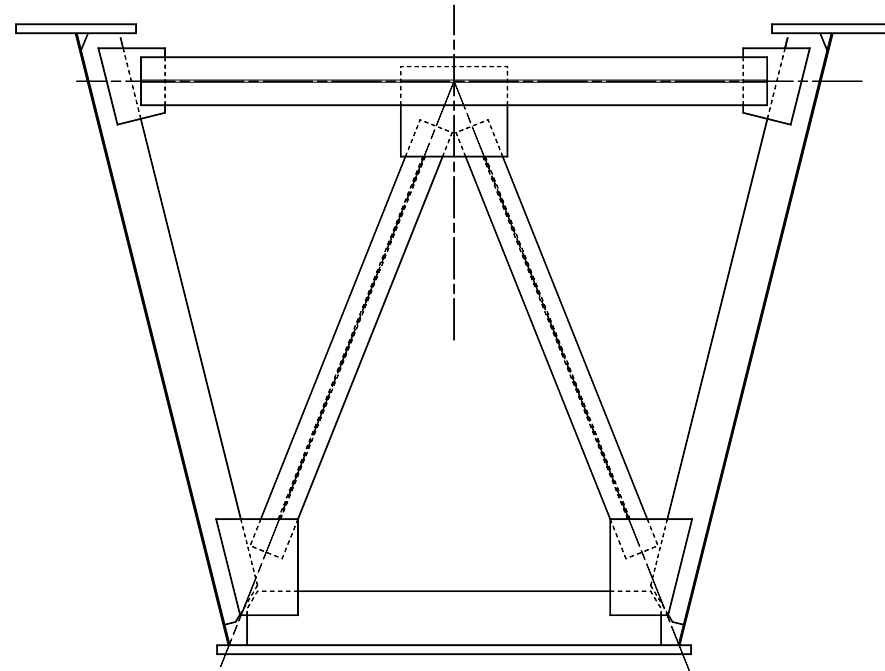


LOWER TRANSVERSE STIFFENER DETAIL

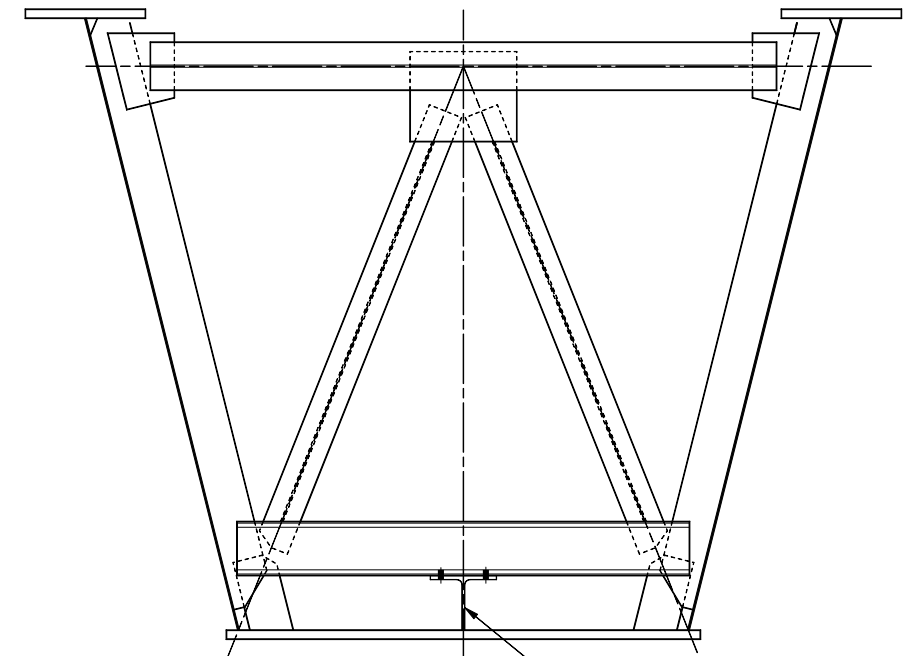
* BOTTOM FLANGE EXTENSION TO ALLOW AUTOMATIC WELDER USE

PROJECT SPECIFIC WELD SIZES

NOTE:
FULL HEIGHT STIFFENERS MAY BE USED
PROVIDED THEY ARE INSTALLED AFTER
ALL WEB-TO-FLANGE WELDING IS COMPLETED.



EXAMPLE CROSSFRAME WITHOUT FLANGE STIFFENER



EXAMPLE CROSSFRAME REGIONS WITH FLANGE STIFFENER

Bridge Design Engr.	M:\STANDARDS\Structural Steel\564-A11.MAN				REGION NO.	STATE	FED. AID PROJ. NO.	SHEET NO.	TOTAL SHEETS
Supervisor					10	WASH.			
Designed By					JOB NUMBER				
Checked By									
Detailed By									
Bridge Projects Engr.									
Prelim. Plan By									
Architect/Specialist	DATE	REVISION	BY	APPD.					

Thu Jan 15 09:02:51 2015

BRIDGE AND STRUCTURES OFFICE



EXAMPLE - BOX GIRDER DETAILS

BRIDGE SHEET NO.
SHEET
OF
SHEETS