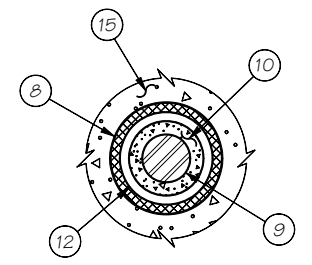
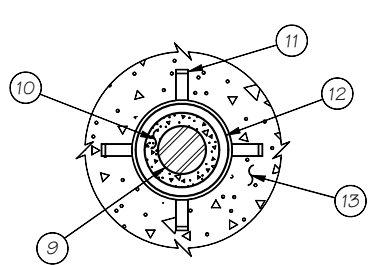


1. ANCHORAGE COVER
2. NUT
3. ANTICORROSION GREASE*
4. BEARING PLATE
5. TRUMPET
6. ANTICORROSION GREASE
7. SEAL
8. SMOOTH PVC BOND BREAKER
9. BAR
10. ENCAPSULATION GROUT
11. CENTRALIZERS
12. CORRUGATED PVC
13. ANCHOR GROUT
14. END CAP
15. NONSTRUCTURAL FILLER

* USE GROUT IF ANCHORAGE COVER IS EXPOSED



SECTION C

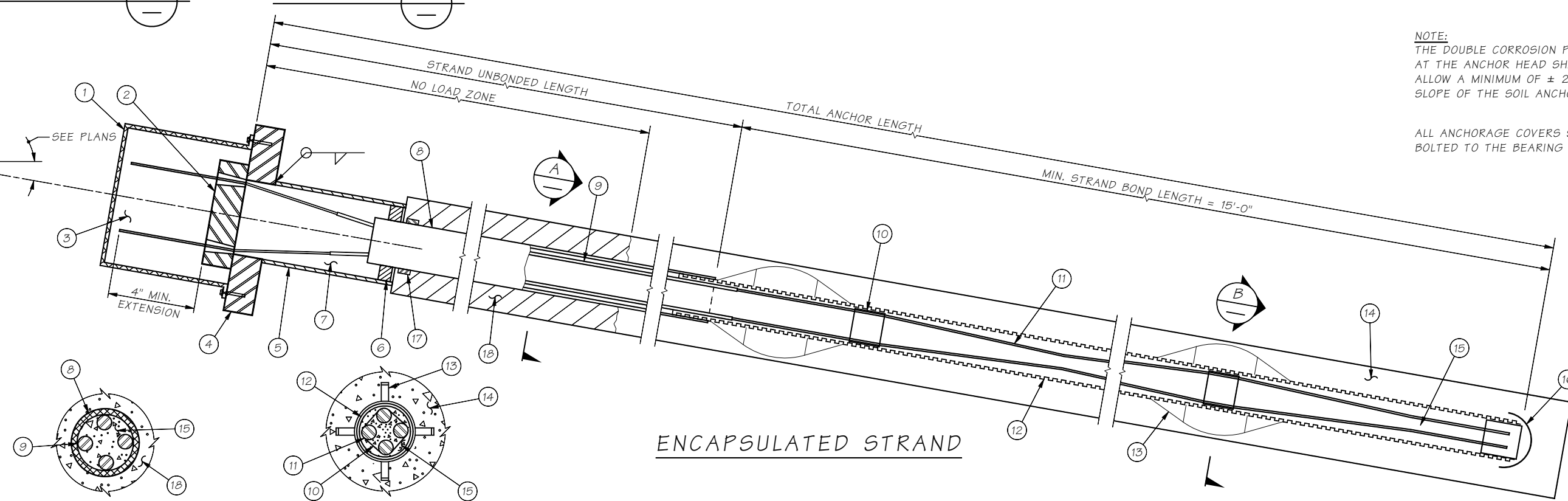


SECTION D

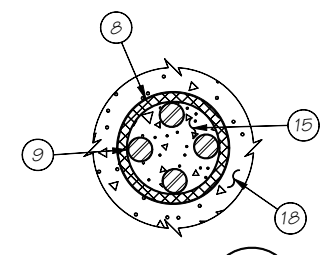
ENCAPSULATED BAR

NOTE:
THE DOUBLE CORROSION PROTECTION SYSTEM AT THE ANCHOR HEAD SHALL BE DETAILED TO ALLOW A MINIMUM OF ± 2° VARIATION IN THE SLOPE OF THE SOIL ANCHOR FOR PLACEMENT TOLERANCE.

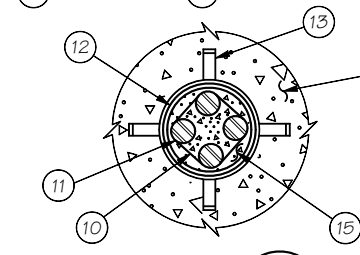
ALL ANCHORAGE COVERS SHALL BE BOLTED TO THE BEARING PLATES.



1. ANCHORAGE COVER
2. ANCHOR HEAD AND WEDGES
3. ANTICORROSION GREASE
4. BEARING PLATE
5. TRUMPET
6. SEAL
7. ANTICORROSION GREASE
8. PVC OR POLYETHYLENE TUBE
9. INDIVIDUALLY GREASED AND SHEATHED STRAND.
10. SPACER
11. STRAND
12. CORRUGATED PVC
13. CENTRALIZER
14. ANCHOR GROUT
15. ENCAPSULATION GROUT
16. END CAP
17. TENSION RING TO RESIST SPLITTING FORCE OF DEFLECTED STRANDS.
18. NON-STRUCTURAL FILLER



SECTION A



SECTION B

ENCAPSULATED STRAND

Last revised on : 12/12/2012

SHEET NO. 8.1-A3-6

Bridge Design Engr.	M:\STANDARDS\Wall\PERMANENT GROUND ANCHOR.MAN				REGION NO.	STATE	FED. AID PROJ. NO.	SHEET NO.	TOTAL SHEETS
Supervisor					10	WASH.			
Designed By					JOB NUMBER				
Checked By									
Detailed By									
Bridge Projects Engr.									
Prelim. Plan By									
Architect/Specialist	DATE	REVISION	BY	APP'D					

BRIDGE AND STRUCTURES OFFICE



SOLDIER PILE/TIEBACK WALL
PERMANENT GROUND ANCHOR DETAILS