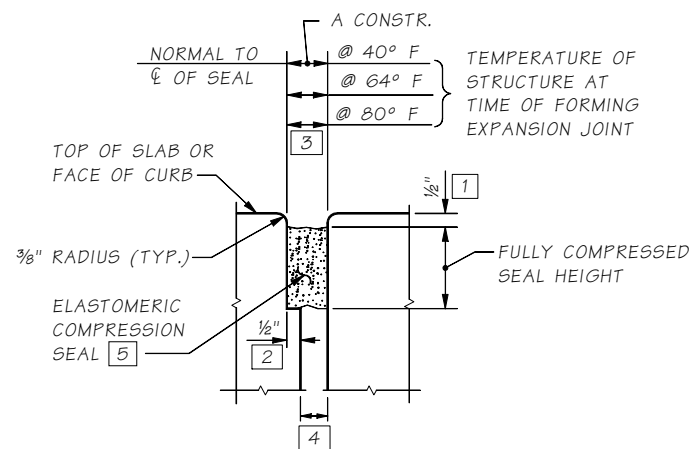


REVISED: 10/2017

SR JOB NO. SHEET

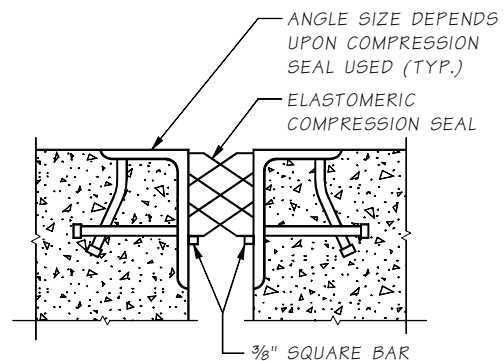
9.1-A-1-1



COMPRESSION SEAL

CONCRETE OPENING

- [1] USE 1/2" FOR ALL SEALS.
- [2] USE 1/2" FOR ALL SEALS.
- [3] COMPUTE "A CONSTR." PER EQUATION (12) @ 40°F, 64°F, AND 80°F.
- [4] TO BE CHECKED BY THE DESIGNER. SHALL BE LARGE ENOUGH TO PREVENT CLOSURE UNDER THERMAL MOVEMENTS.
- [5] SEE BDM SECTION 9.1.3A AND DESIGN EXAMPLE FOR COMPRESSION SEAL DESIGN AND SEE "COMPRESSION SEAL TABLE" ON THIS SHEET.



COMPRESSION SEAL

ARMORED OPENING.
USE IN BRIDGE WIDENINGS WITH EXISTING ARMORED JOINTS

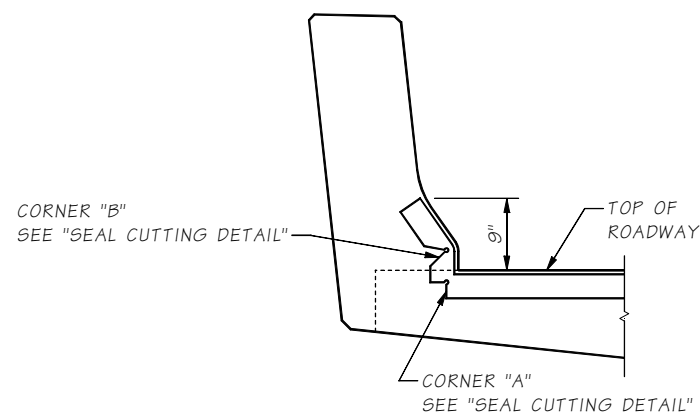
NOTE:
DESIGNER TO USE APPROPRIATE DETAILS FROM THIS SHEET AND CONSULT WITH EXPANSION JOINT SPECIALIST FOR LATEST PLAN SHEET LAYOUT, NOTES, AND UP-TO-DATE DETAILS.

COMPRESSION SEAL TABLE

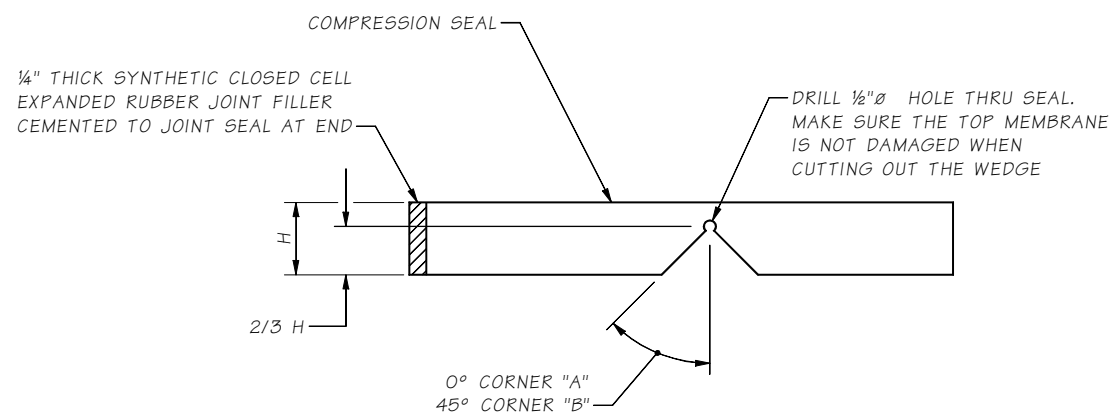
| D.S. BROWN | | WATSON BOWMAN ACME | |
|------------|--------|--------------------|--------|
| SEAL | WIDTH | SEAL | WIDTH |
| CV-2000 | 2" | WA-200 | 2" |
| CV-2502 | 2 1/2" | WA-250 | 2 1/2" |
| CV-3000 | 3" | WA-300 | 3" |
| CV-3500 | 3 1/2" | WA-350 | 3 1/2" |
| CV-4000 | 4" | WA-400 | 4" |

TESTING SHALL BE PER ASTM D2628 PRIOR TO USE.

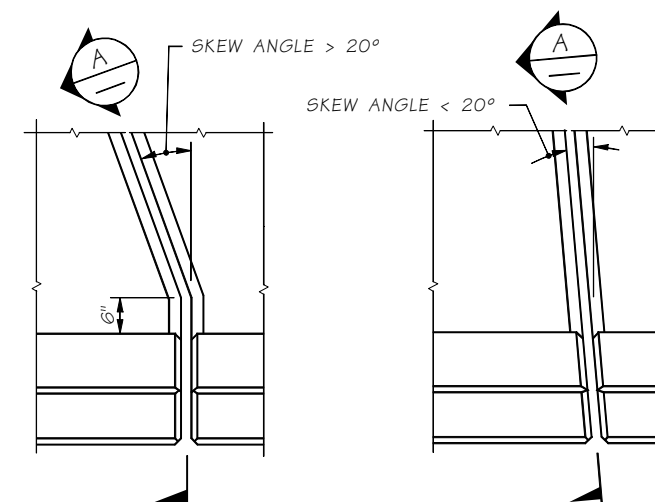
NOTE:
COMPRESSION SEALS GREATER THAN FOUR INCHES WIDE SHOULD NOT BE USED



SECTION A



SEAL CUTTING DETAIL



PLAN EXPANSION JOINT

| | | | | | | |
|-----------------------|--|------------|-------|--------------------|-----------|--------------|
| Bridge Design Engr. | M:\STANDARDS\Expansion Joints\COMPRESSION SEAL DET.MAN | REGION NO. | STATE | FED. AID PROJ. NO. | SHEET NO. | TOTAL SHEETS |
| Supervisor | | 10 | WASH. | | | |
| Designed By | | JOB NUMBER | | | | |
| Checked By | | | | | | |
| Detailed By | | | | | | |
| Bridge Projects Engr. | | | | | | |
| Prelim. Plan By | | | | | | |
| Architect/Specialist | DATE | REVISION | BY | APPD | | |

Wed Oct 18 13:14:40 2017

BRIDGE AND STRUCTURES OFFICE



EXPANSION JOINTS

EXPANSION JOINT DETAILS
COMPRESSION SEAL

BRIDGE SHEET NO.
SHEET
OF
SHEETS